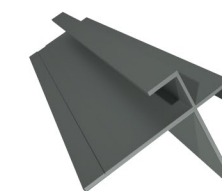
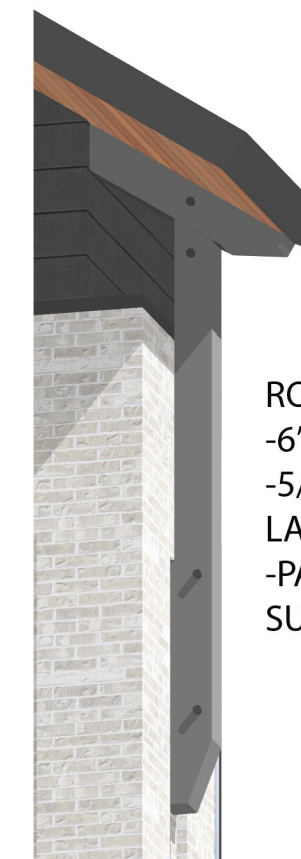




CANOPIES #2:
 -8" C CHANNEL, ALUMN.
 -CANTILEVERED
 -FLAT SOFFIT
 -INTEGRATED SIDE SCUPPER
 -MFGR: MAPES OR EQ.



CORNER TRIM (SIDING):
 -EXTRUDED ALUMIN.
 -MFGR. TAMYLIN OR EQ.
 -COLOR: DARK GREY



ROOF BRACKETS:
 -6"X6" TIMBER
 -5/8" RECESSED LAG BOLTS
 -PAINTED SW SUMMIT GRAY

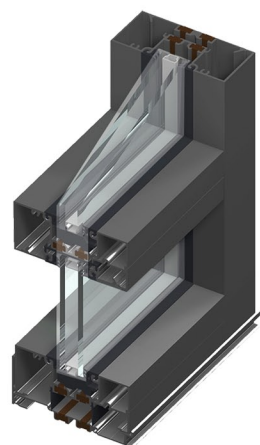
CANOPIES #1:
 -6"X6" TIMBER BRACKETS
 -PAINTED SW S
 UMMIT GRAY
 -STANDING SEAM METAL
 - FINISH: GALVALUM,
 -12" RIB, 24 GA.



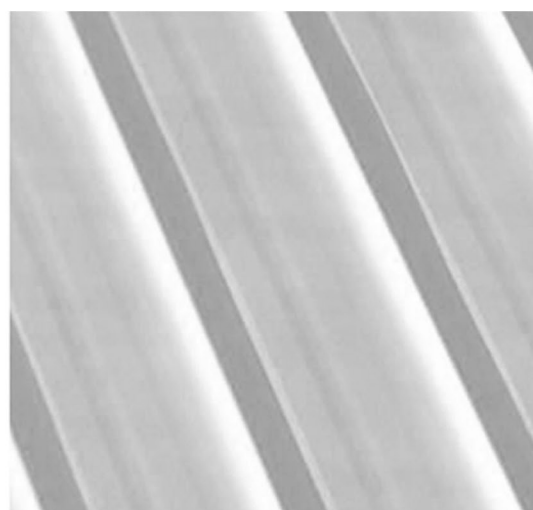
ACCENT LIGHTING:
 -WALL SCNCE
 -22" TALL, LED
 -5" BASE PLATE
 -MFGR: PADDOCK 2
 -COLOR: DARK GREY

EXTERIOR MATERIALS PALETTE BUILDINGS "A", "B" & "C"

NOTE: SIGNAGE BY OTHERS



DOORS/WINDOWS:
 -ALUMINUM
 STOREFRONT
 -2.5"X5" FRAME
 -COLOR: DARK GREY
 -IMPACT RATED

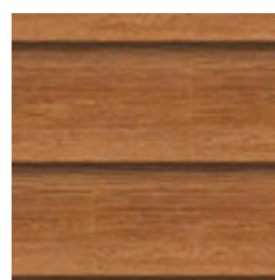


SLOPED ROOFS:
 -METAL, STANDING SEAM
 - GALVALUM, 1.75" RIB
 -SNAP LOCK PROFILE, 16" RIB, 22 GA.



COPING:
 -BRAKE METAL,
 -ROLLFAB OR EQ.
 -FINISH: KYNAR

FASCIAS:
 FIBER CEMENT
 MATCH SIDING COLOR



ACCENT SOFFITS:
 -SIMULATED WOOD
 -FIBER CEMENT
 =5/16" X 6"
 -MFGR:
 CAROLINA COLOR
 TONES OR EQ.



PRIMARY SIDING:
 -SHIP LAP, FIRBER CEMENT
 -5/8" X 9" EXPOSURE"
 -COLOR: SW 2739, CHARCOAL BLUE



BRICK VENEER: -SIZE, QUEEN
 -MFGR, MERIDIAN
 -"MAGNOLIA BAY"
 -MORTAR: "IVORY". FLUSH JOINTS



COURTYARD & ENTRY PLAZA'S:
 -SCORED CONCRETE
 -SAND FINISH, 2'X2' PATTERN





Carolina Ave

Goose Creek Blvd

Street View from Carolina Ave Intersection





Street View from Carolina Ave Entrance





Enlarged View from Parking





Enlarged View from Entrance



Building B/C



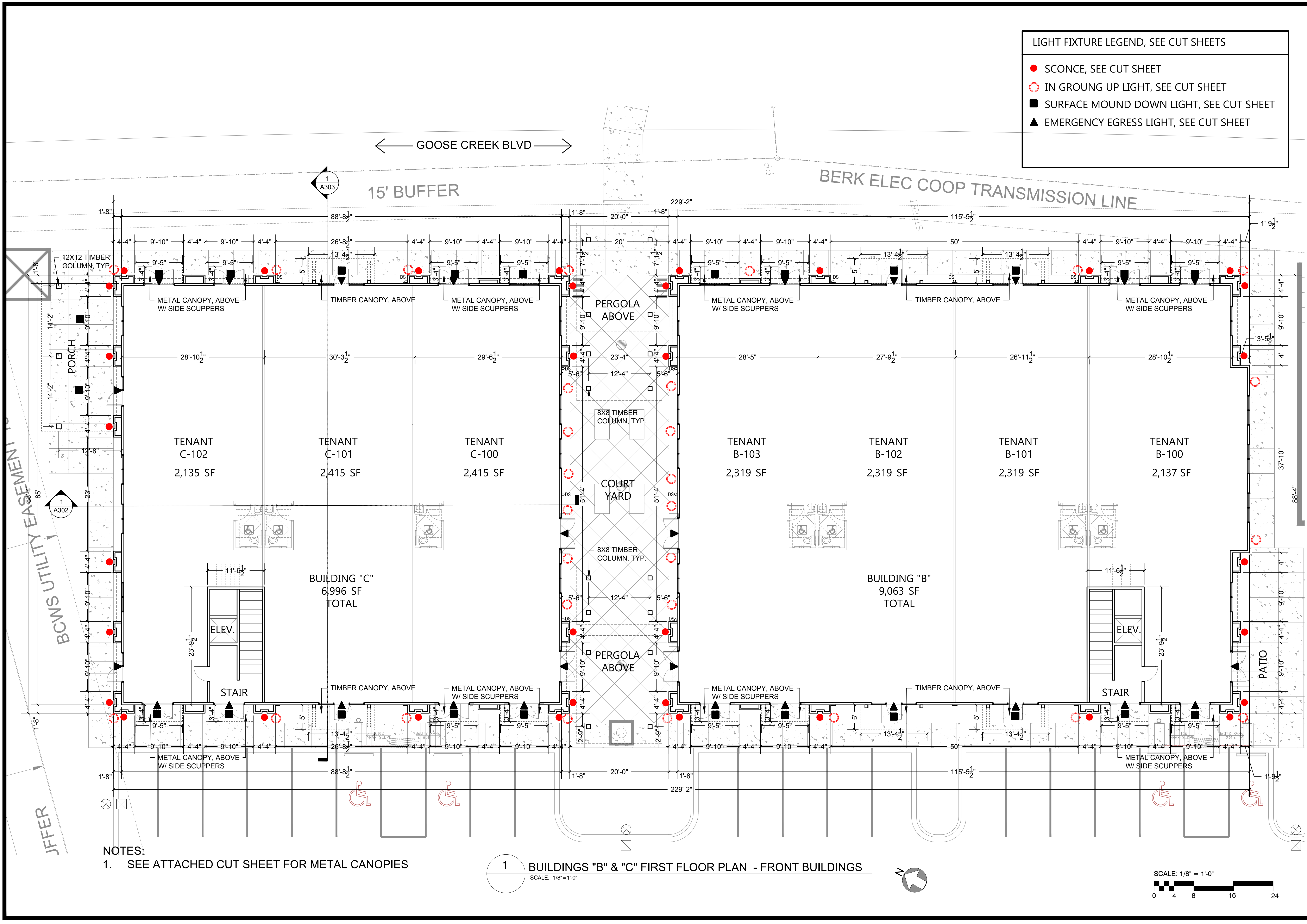


Enlarged Bird's Eye



ORIGINAL LAYOUT SIZE: 24x36

COPYRIGHT 2023 - LFK ARCHITECTS, LLC



LIGHT FIXTURE LEGEND, SEE CUT SHEETS

- SCONCE, SEE CUT SHEET
- IN GROUND UP LIGHT, SEE CUT SHEET
- SURFACE MOUND DOWN LIGHT, SEE CUT SHEET
- ▲ EMERGENCY EGRESS LIGHT, SEE CUT SHEET

STATE OF SOUTH CAROLINA
 LFK ARCHITECTS, LLC
 ARCHITECT
 No. 10043
 REGISTERED ARCHITECT

STATE OF SOUTH CAROLINA
 LOSSE F. KNIGHT III
 ARCHITECT
 No. 7711
 REGISTERED ARCHITECT

LFK ARCHITECTS
 Land Planning + Feasibility Studies
 Commercial + Residential Design
 www.lfkarchitect.com

LFK ARCHITECTS, LLC
 802 COLEMAN BLVD, SUITE 100
 MOUNT PLEASANT, SC 29564
 LOSSE F. KNIGHT III, AIA
 losse@lfkarchitect.com
 phone: 843-330-8940

JOB NUMBER:	
DRAWN:	
CHECKED:	

REVISION NOTES:

Carolina Avenue Commercial Village
 100 Carolina Ave
 Goose Creek, SC 29445

BUILDINGS "B" & "C" FIRST FLOOR PLAN

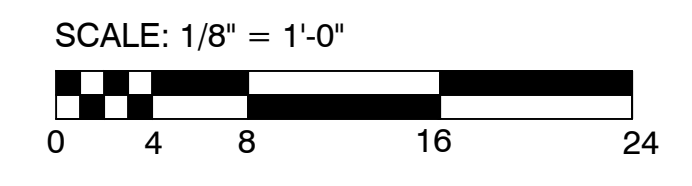
SHEET NUMBER & TITLE:

A103

FINAL ARB
 01.18.23

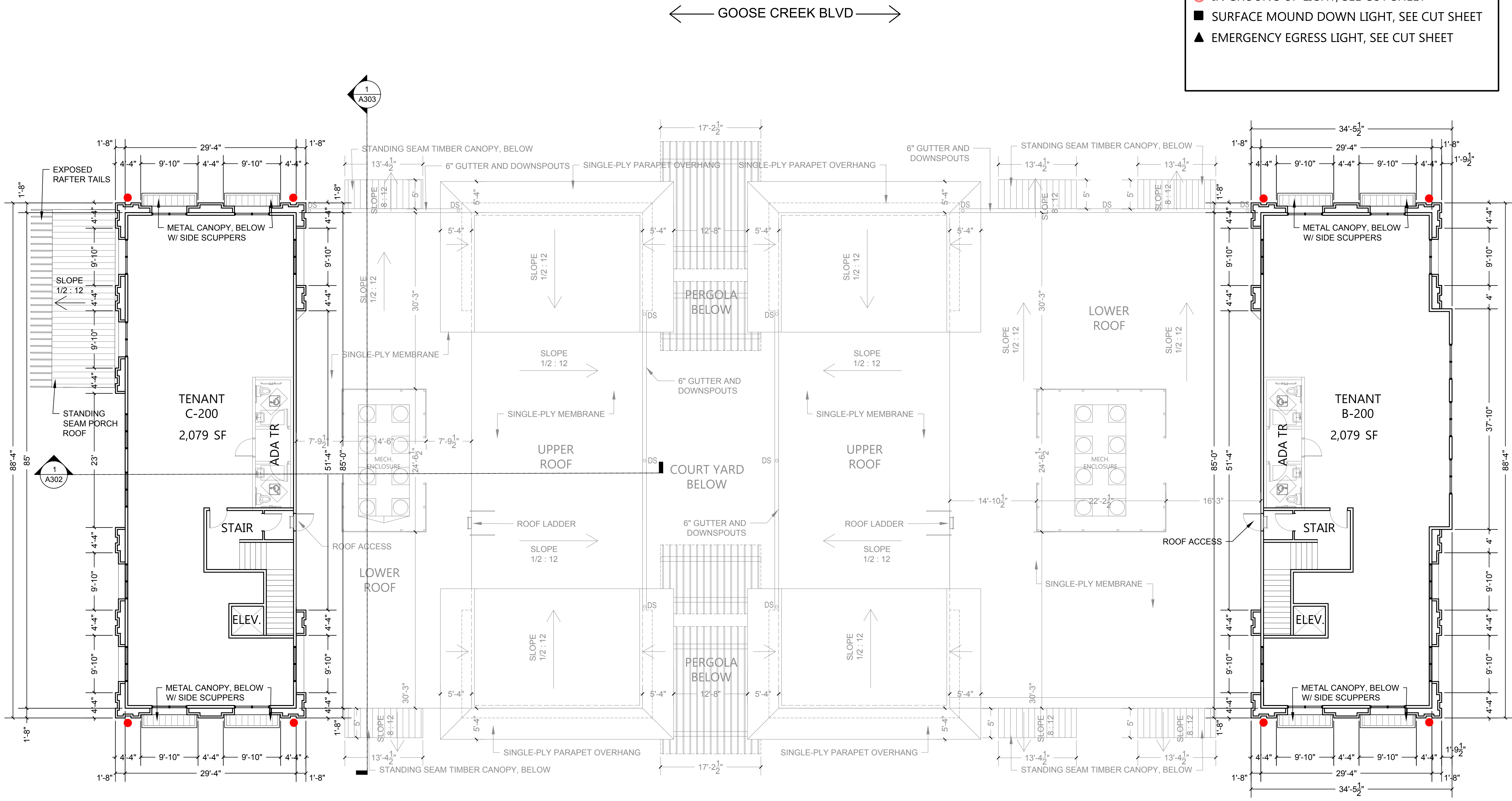
NOTES:
 1. SEE ATTACHED CUT SHEET FOR METAL CANOPIES

1 BUILDINGS "B" & "C" FIRST FLOOR PLAN - FRONT BUILDINGS
 SCALE: 1/8" = 1'-0"



ORIGINAL LAYOUT SIZE: 24x36

COPYRIGHT 2023 - LFK ARCHITECTS, LLC



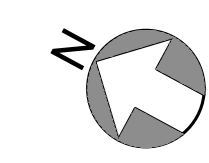
LIGHT FIXTURE LEGEND, SEE CUT SHEETS

- SCONCE, SEE CUT SHEET
- IN GROUND UP LIGHT, SEE CUT SHEET
- SURFACE MOUND DOWN LIGHT, SEE CUT SHEET
- ▲ EMERGENCY EGRESS LIGHT, SEE CUT SHEET

← GOOSE CREEK BLVD →

NOTES:
 1. SEE ATTACHED CUT SHEET FOR METAL CANOPIES

1 BUILDINGS "B" & "C" SECOND FLOOR PLAN - FRONT BUILDINGS
 SCALE: 1/8"=1'-0"



SCALE: 1/8" = 1'-0"
 0 4 8 16 24

STATE OF SOUTH CAROLINA
 LFK ARCHITECTS, LLC
 MT. PLEASANT, SC
 No. 10643
 REGISTERED ARCHITECT

STATE OF SOUTH CAROLINA
 LOSSE F. KNIGHT III
 CHARLESTON, SC
 No. 7711
 REGISTERED ARCHITECT

LFK ARCHITECTS
 Land Planning + Feasibility Studies
 Commercial + Residential Design
 www.lfkarchitect.com

LFK ARCHITECTS, LLC
 802 COLEMAN BLVD, SUITE 100
 MOUNT PLEASANT, SC 29464
 LOSSE F. KNIGHT III, AIA
 losse@lfkarchitect.com
 phone: 843-330-8940

JOB NUMBER:	
DRAWN:	
CHECKED:	

REVISION NOTES:

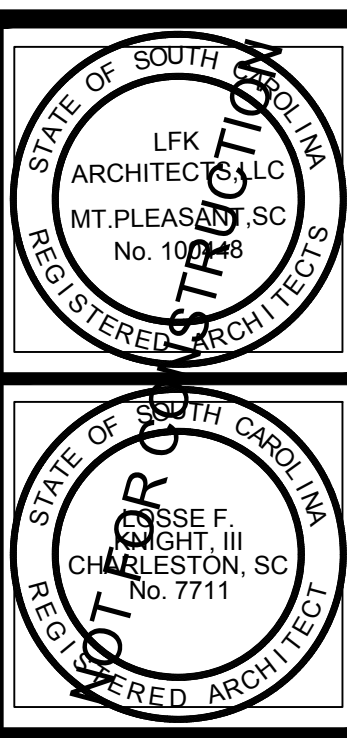
Carolina Avenue Commercial Village
 100 Carolina Ave
 Goose Creek, SC 29445
BUILDINGS "B" & "C" SECOND FLOOR PLAN

SHEET NUMBER & TITLE:

A104

FINAL ARB
01.18.23

ORIGINAL LAYOUT SIZE: 24x36



LFK ARCHITECTS
Land Planning + Feasibility Studies
Commercial + Residential Design
www.lfkarchitect.com

LFK ARCHITECTS, LLC
802 COLEMAN BLVD, SUITE 100
MOUNT PLEASANT, SC 29564
LOSSE F. KNIGHT III, AIA
losse@lfkarchitect.com
phone: 843-330-8940

JOB NUMBER:
DRAWN:
CHECKED:

REVISION NOTES:

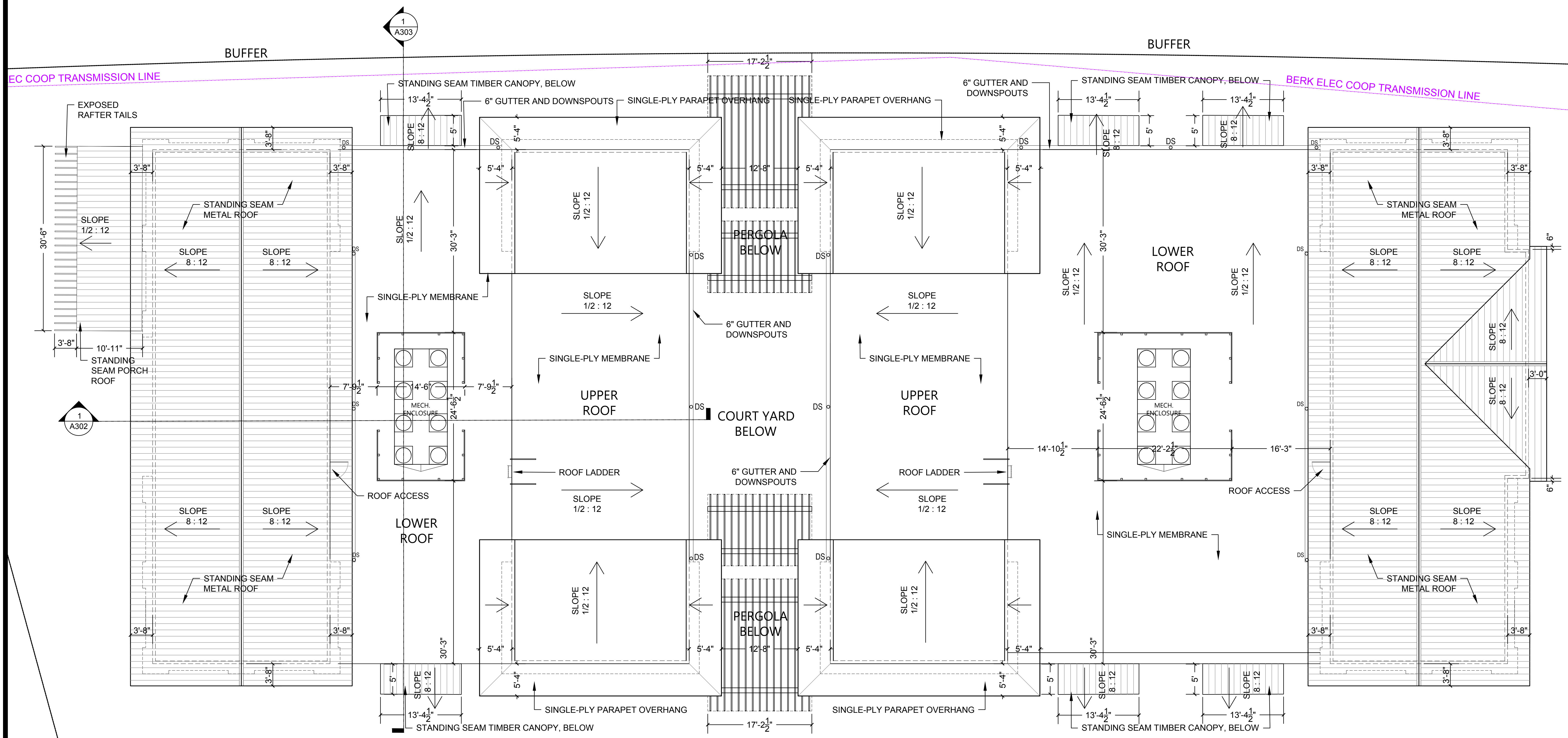
Carolina Avenue Commercial Village
100 Carolina Ave
Goose Creek, SC 29445
BUILDINGS "B" & "C" ROOF PLAN

SHEET NUMBER & TITLE:

A105

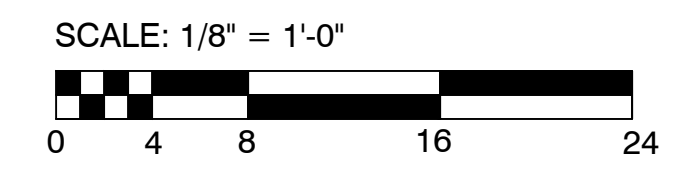
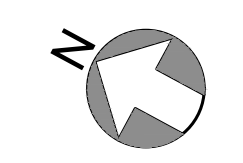
FINAL ARB
01.18.23

← GOOSE CREEK BLVD →



NOTES:
1. SEE ATTACHED CUT SHEET FOR METAL CANOPIES

1 BUILDINGS "B" & "C" ROOF PLAN - FRONT BUILDINGS
SCALE: 1/8" = 1'-0"



COPYRIGHT 2023 - LFK ARCHITECTS, LLC



Street View Southwest from Goose Creek Blvd Sidewalk





Street View East coming from Building D





View Along Parking Side





View Northeast from parking





Enlarged Bird's Eye B/C Courtyard





Enlarged View Courtyard





Bird's Eye Patio





Enlarged View Courtyard





Enlarged View from Parking





Enlarged View Courtyard





Enlarged View from Buffer



Building D





Overall Bird's Eye View Northeast

