

**City of Goose Creek Department of Public Works – Fire Station #3 Concrete  
Driveway Replacement**

Project Name: Fire Station #3 Concrete Driveway Replacement

Project Location: 535 Old Mt. Holly Road, Goose Creek, SC 29445

Bid Security Required: Yes

Performance Bond Required: Yes

Payment Bond Required: Yes

Construction Cost Range: \$25,000 - \$35,000

Description of Project: The City of Goose Creek is seeking proposals from licensed contractors for the demolition of failed sections of an existing concrete driveway at Fire Station #3. Those failed sections of the concrete driveway will be replaced with new sections of concrete. Prior to the installation of new concrete, subgrade soil stabilization using geotextile fabric (HP-370 or equivalent) will be necessary. Installation of a 57 stone base course will also be required. All tie-ins from new concrete to existing concrete will be accomplished using steel dowels. New concrete will be reinforced with 6x6 W2.9xW2.9 WWF. The proposal will include demolition of existing concrete, installation of suitable fill (as required), geotextile fabric, 57 stone, steel dowels, welded wire fabric, 7" of concrete, construction and expansion joints. The proposals are also to include a copy of the contractor's license and liability insurance certificate. Warranty information related to the materials and workmanship should also be included in the proposal. Site visits should be scheduled in advance to ensure availability of site.

There will be a Non-Mandatory Pre-Bid Meeting on June 20, 2024 at 11:00am at the Goose Creek Department of Public Works Building located at 200 Button Hall Avenue, Goose Creek, SC 29445.

Agency/Owner: The City of Goose Creek Department of Public Works

Name & Title of Agency Coordinator: James A. Fisk – City Engineer

Address: 200 Button Hall Avenue, Goose Creek, SC 29445

E-mail: [jfisk@cityofgoosecreek.com](mailto:jfisk@cityofgoosecreek.com)

Telephone: (843) 824-2200

Site Address: 200 Button Hall Avenue, Goose Creek, SC 29445

Closing Date/Time: 2PM, Thursday, July 10, 2024

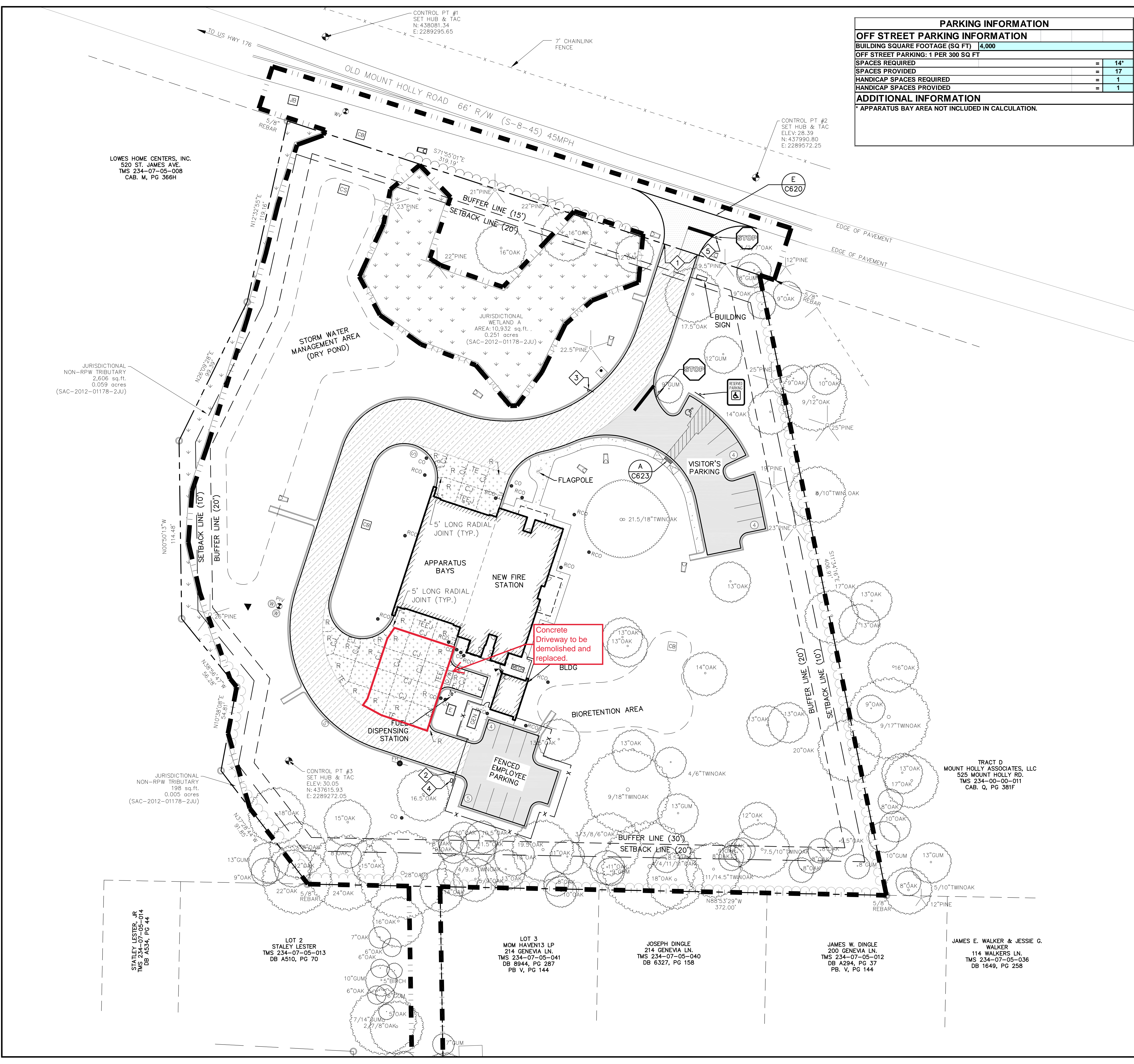
Hand Deliver Proposal To: 200 Button Hall Avenue, Goose Creek, SC 29445

Mail Proposal To: Attention James Fisk

City of Goose Creek – DPW

P.O. Drawer 1768

Goose Creek, SC 29445

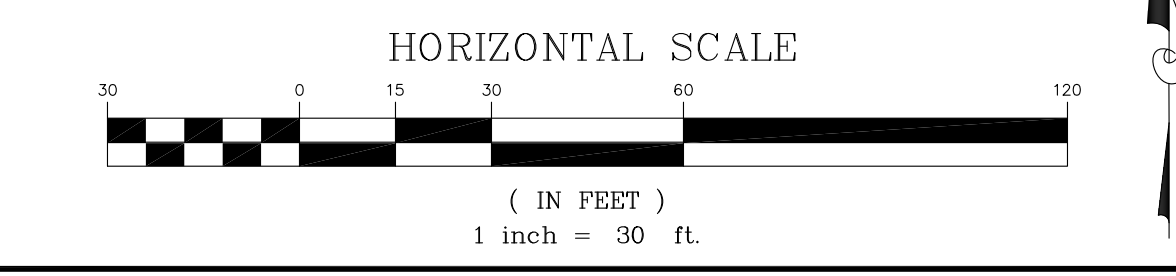


PARKING INFORMATION	
<b>OFF STREET PARKING INFORMATION</b>	
BUILDING SQUARE FOOTAGE (SQ FT)	4,000
OFF STREET PARKING: 1 PER 300 SQ FT	
SPACES REQUIRED	= 14*
SPACES PROVIDED	= 17
HANDICAP SPACES REQUIRED	= 1
HANDICAP SPACES PROVIDED	= 1
<b>ADDITIONAL INFORMATION</b>	
* APPARATUS BAY AREA NOT INCLUDED IN CALCULATION.	

- GENERAL NOTES:**
- SEE SHEET C001 FOR CIVIL NOTES AND ABBREVIATIONS.
  - CONTRACTOR IS RESPONSIBLE FOR ALL WORK SHOWN, UNLESS SPECIFICALLY INDICATED OTHERWISE.
  - CONTRACTOR SHALL VISIT THE SITE PRIOR TO BIDDING TO DETERMINE THE EXTENT OF THE PROJECT.
  - CONTRACTOR SHALL CONTACT PALMETTO UTILITY LOCATION SERVICE AT 1-888-721-7877 PRIOR TO ANY WORK. CONTRACTOR IS RESPONSIBLE FOR FIELD LOCATING AND PROTECTING ALL UTILITIES. CONTACT THE ENGINEER IN THE EVENT THAT UTILITIES CONFLICT WITH NEW FACILITIES.
  - ALL PROJECT STAKEOUT SHALL BE PERFORMED BY A REGISTERED LAND SURVEYOR TO BE PAID FOR BY THE CONTRACTOR. FOR STAKEOUT, DO NOT RELY SOLELY ON THE PHYSICAL SCALE AS SHOWN IN DRAWINGS. REFER TO THE GIVEN DIMENSIONS, SYMBOL LEGEND, KEYNOTES, AND REFERENCED DETAILS FOR CORRECT STAKEOUT.
  - ALL CONTRACTORS/SUBCONTRACTORS/PERSON THAT WILL BE ENGAGED IN LAND DISTURBING ACTIVITIES SHALL COMPLY WITH ALL EROSION CONTROL AND STORMWATER POLLUTION PREVENTION REQUIREMENTS CONTAINED THROUGHOUT THE DRAWINGS, SPECIFICATIONS AND PERMITS.

- CIVIL LEGEND - SITE**
- STANDARD DUTY ASPHALT PAVEMENT - INSTALL IAW DETAIL A/C620.
  - HEAVY DUTY ASPHALT PAVEMENT - INSTALL IAW DETAIL B/C620.
  - HEAVY DUTY CONCRETE PAVEMENT - INSTALL IAW DETAIL C/C620.
  - CONCRETE/SIDEWALK - INSTALL IAW DETAIL F/C620.
  - SCDOT R/W ASPHALT PAVEMENT - INSTALL IAW DETAIL I/C621.
  - CONTRACTION JOINT - INSTALL IAW DETAIL G/C620.
  - EXPANSION JOINT - INSTALL IAW DETAIL G/C620.
  - THICKENED EDGE - INSTALL IAW DETAIL G/C620.
  - THICKENED EDGE EXPANSION JOINT - INSTALL IAW DETAIL G/C620.
  - REINFORCED SLAB - INSTALL IAW DETAIL C/C620.
  - ACCESSIBLE PARKING SPACE AND AISLE - IAW DETAIL G/C621.
  - SIDEWALK RAMP - INSTALL IAW DETAIL H/C621.
  - STOP BAR - INSTALL IAW DETAIL F/C621.
  - PARKING SPACES - STRIPE WITH 4" SINGLE WHITE SOLID LINE.
  - NEW TRAFFIC SIGN - INSTALL PER PLAN AND IAW DETAILS A/C621 & D/C621.
  - FENCE - INSTALL IAW DETAIL B/C623.
  - LIMITS OF CONSTRUCTION/LIMITS OF DISTURBANCE.
  - CURB AND GUTTER - INSTALL IAW DETAIL D/C620.
  - BUFFER LINE.
  - SETBACK LINE.
  - FLUME - INSTALL IAW DETAIL C/C632.
  - NEW TRANSFORMER
  - NEW EMERGENCY GENERATOR
  - DETECTABLE WARNING PANELS - INSTALL IAW DETAIL A/C623.

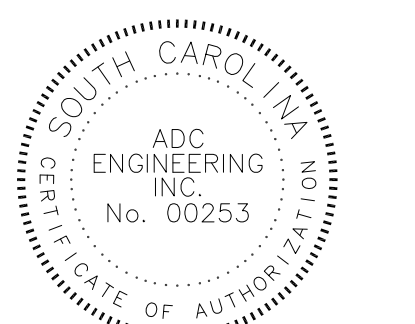
- KEYNOTES:**
- TAPER CURB TO FLUSH OVER 2' HORIZONTAL.
  - INSTALL CONCRETE HEADER CURB WITH GATE V-TRACK PER GATE MANUFACTURER'S RECOMMENDATION. CURB SHALL BE MINIMUM 12" WIDE BY 18" DEEP.
  - INSTALL DIRECTIVE SIGN FOR "VISITOR PARKING" & "NO PUBLIC ACCESS" IAW ARCHITECTURAL PLANS.
  - INSTALL GATE OPERATOR AND POST IAW B/C623.
  - INSTALL 30" STOP SIGN PER MUTCD LATEST EDITION.



**THOMAS & DENZINGER ARCHITECTS**

73 1/2 State Street  
Charleston, SC 29401  
ph: (843) 577-5373  
thomasanddenzinger.com

P.O. Box 896  
Charleston, SC 29402  
ph: (843) 577-9503  
fc: (843) 577-9503



**CONSULTANTS**

Civil Engineering & Landscape Architecture:

**ADC**  
ENGINEERING SPECIALISTS  
1226 Yeamans Hall Road  
Hanahan, SC 29410  
ph: (843) 566-0161  
adcengineering.com  
ADC PROJECT NO: 12303

Structural Engineering:

**4SE**  
STRUCTURAL ENGINEERS  
7 Radcliffe Street  
Suite 301  
Charleston, SC 29403  
ph: (843) 722-1992  
4seinc.com

Mechanical, Electrical, Plumbing, Fire Protection Engineering:

**rmi**  
194 Seven Farms Drive  
Suite G  
Charleston, SC 29492  
ph: (843) 971-9639  
rmi.com

Mk	Description	Date

Project Title:  
**CITY OF GOOSE CREEK FIRE STATIONS**

CONSTRUCTION DOCUMENTS

Charleston, South Carolina

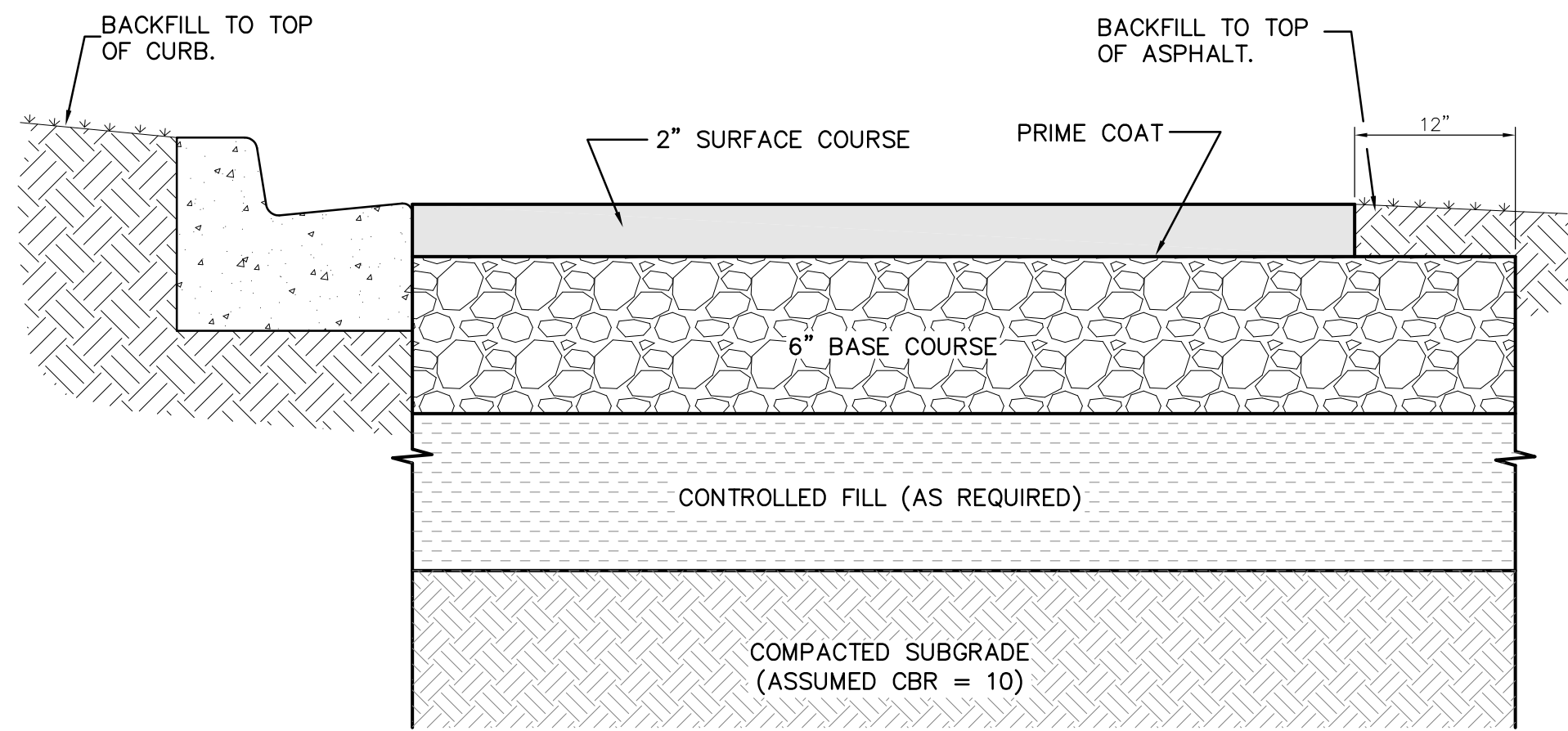
Drawing Title:  
**STATION # 3 SITE PLAN**

Date:  
24 OCTOBER 2013

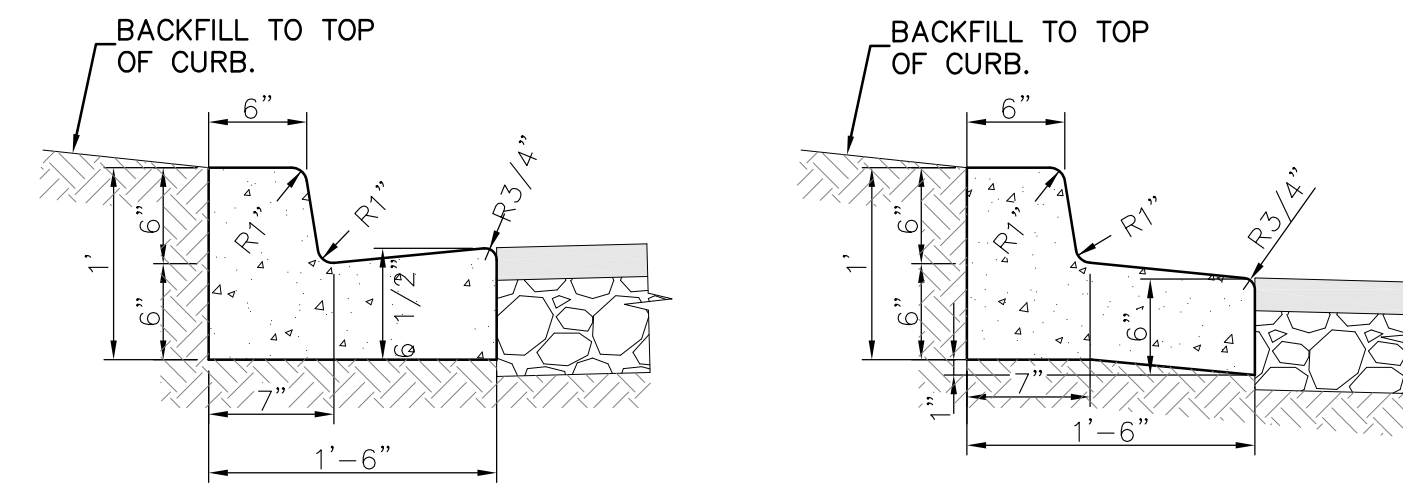
Scale:  
1" = 30'

Drawing No.  
**C200**

Sheet  
4 of 167



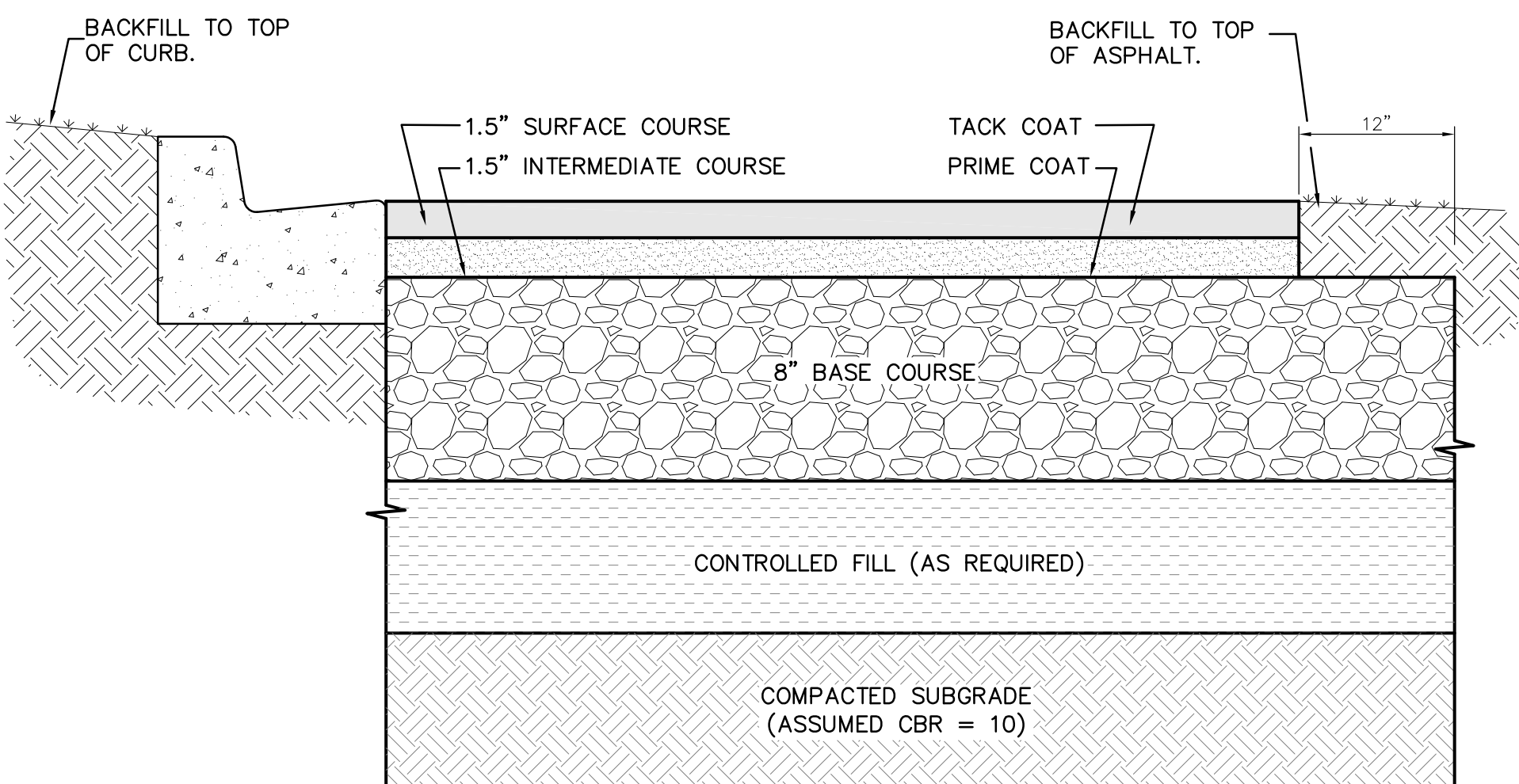
**A** TYPICAL ASPHALTIC CONCRETE PAVEMENT SECTION  
NOT TO SCALE



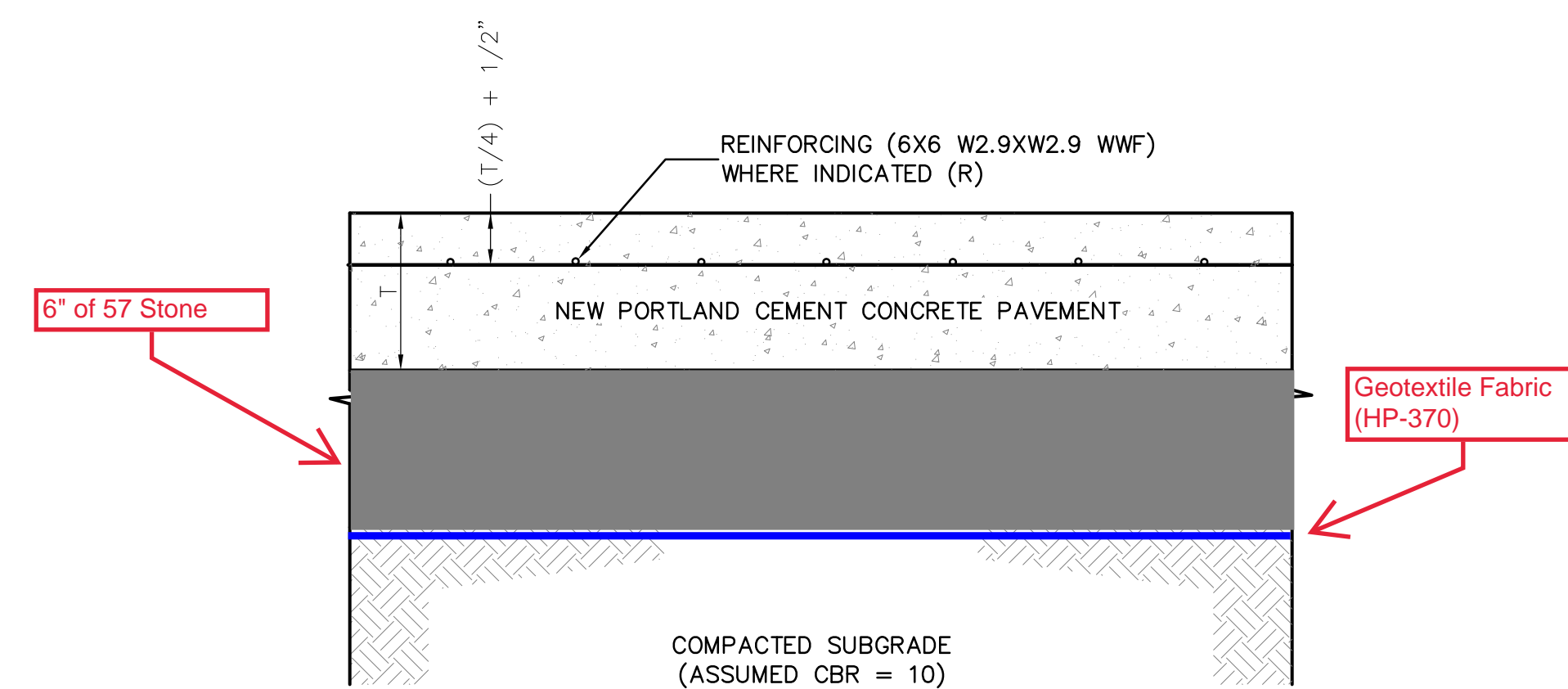
**18\"/>**

- NOTES:
1. WHERE SLOPE IS AWAY FROM CURB, USE REVERSED PITCH.
  2. WHERE SLOPE IS TOWARDS CURB, USE STANDARD.
  3. PLACE CONTRACTION JOINTS AT 10' INTERVALS (5' MIN.)
  4. PLACE EXPANSION JOINTS AT 50' MAXIMUM INTERVALS.
  5. WHERE CURB AND GUTTER INTERFACES WITH P.C.C. USE EXPANSION JOINT.

**D** 18\"/>



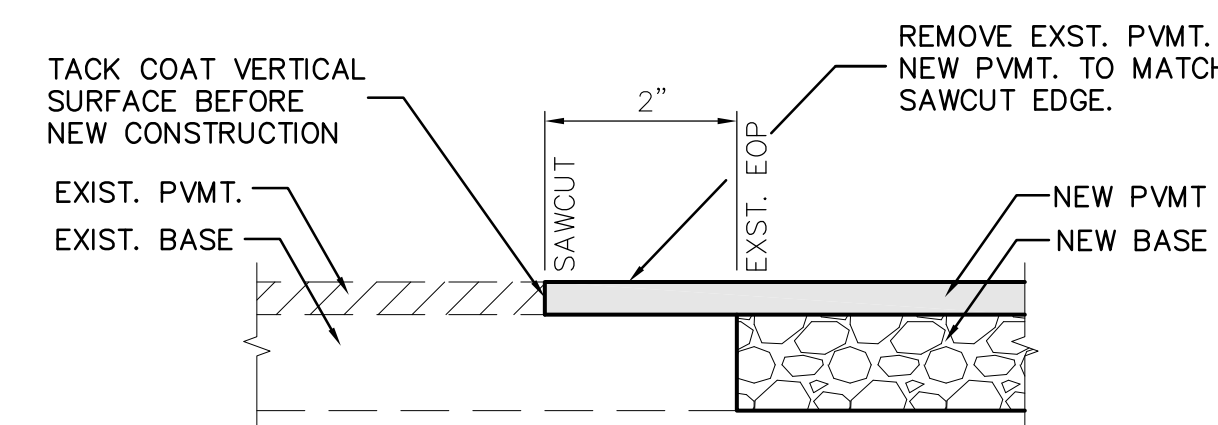
**B** HEAVY DUTY ASPHALTIC CONCRETE PAVEMENT SECTION  
NOT TO SCALE



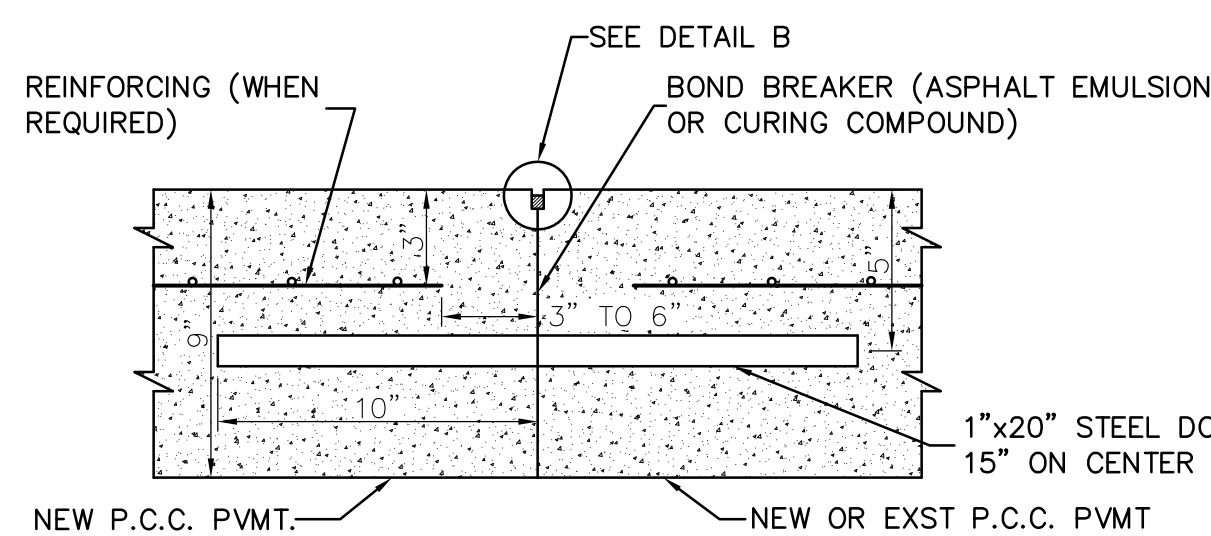
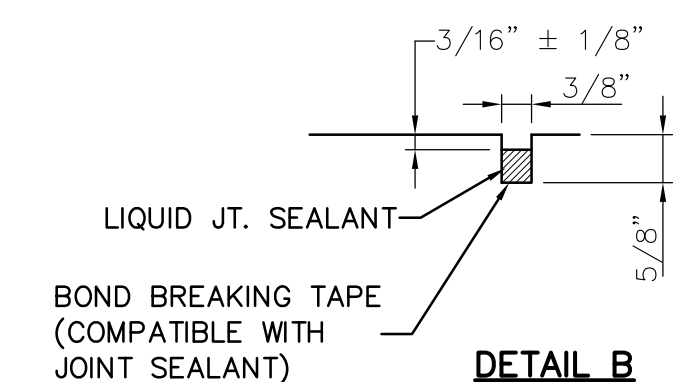
	T
HEAVY DUTY	7"

PAVEMENT THICKNESS = T

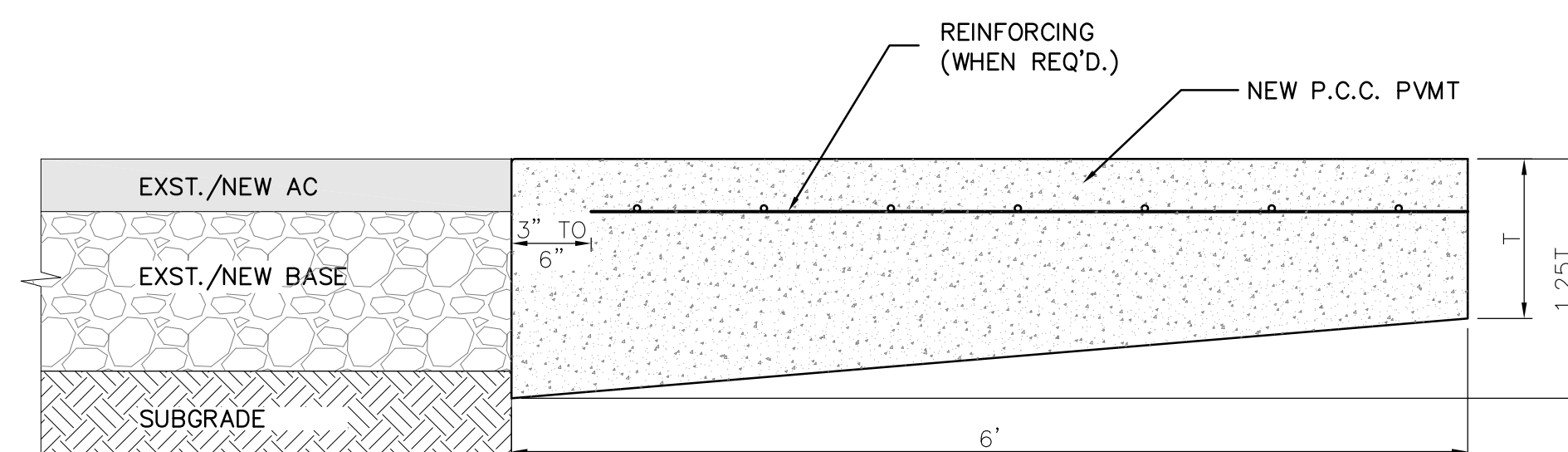
**C** TYPICAL P.C.C. PAVEMENT SECTION  
NOT TO SCALE



**E** PAVEMENT TIE-IN TO EXISTING PAVEMENT  
NOT TO SCALE

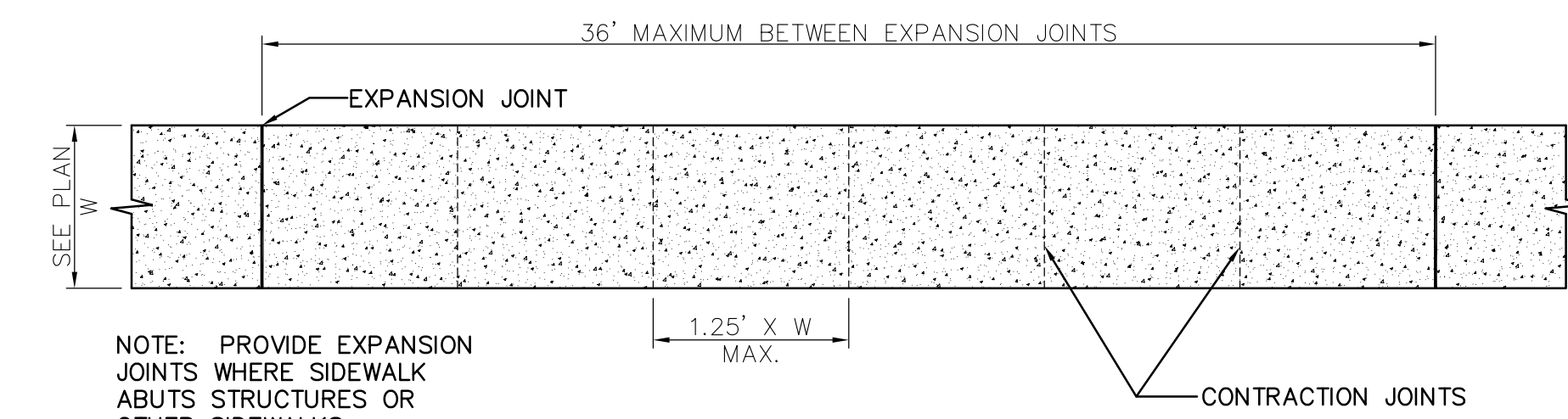


**DOWELLED CONSTRUCTION JOINT (C.J.)**



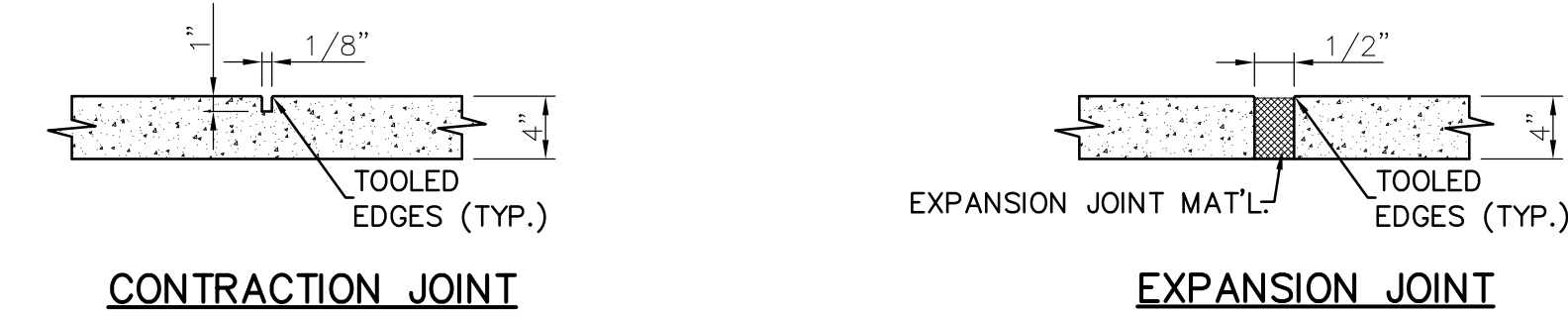
PAVEMENT THICKNESS = T

**THICKENED EDGE (TE)**  
NOT TO SCALE



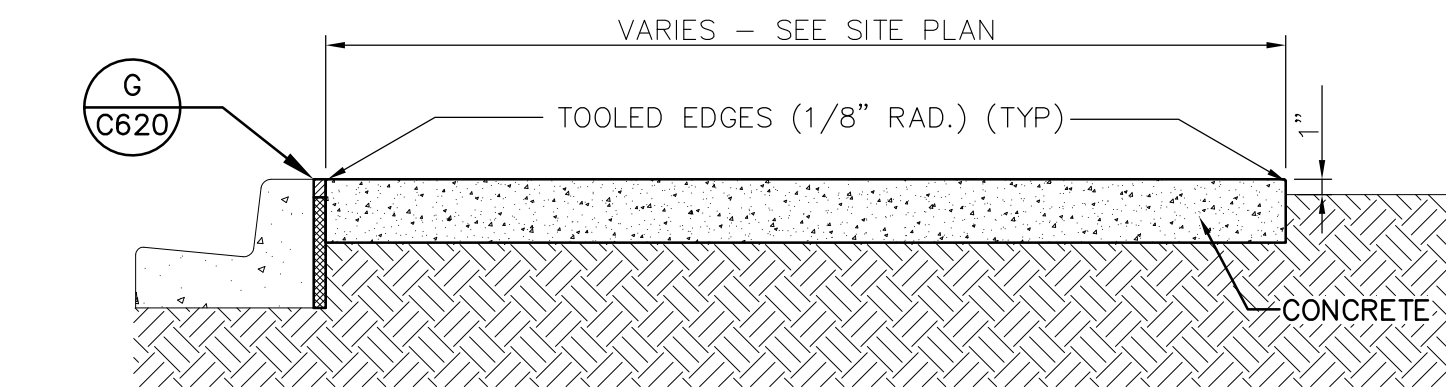
NOTE: PROVIDE EXPANSION JOINTS WHERE SIDEWALK ABUTS STRUCTURES OR OTHER SIDEWALKS.

**PLAN**



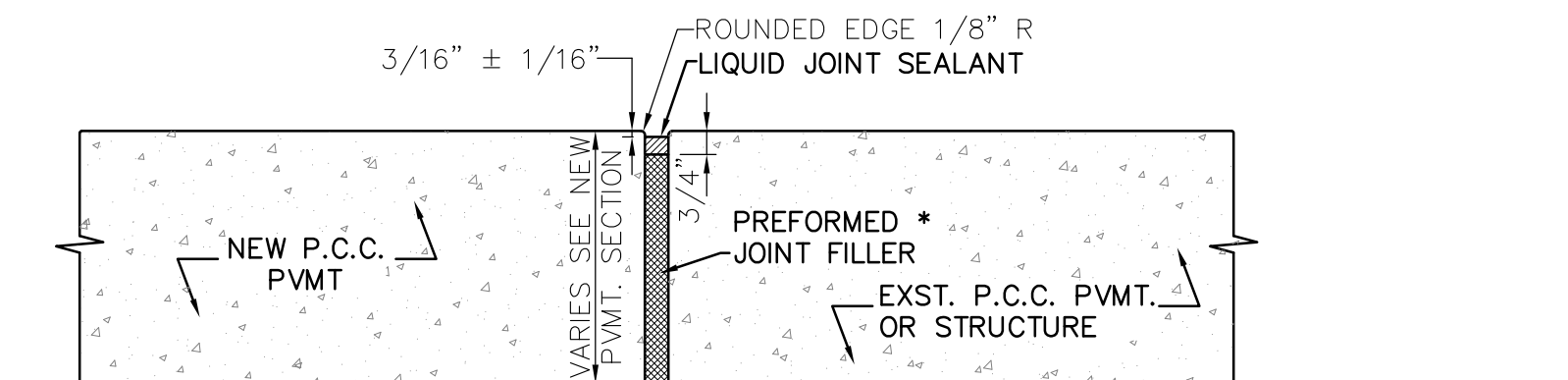
**CONTRACTION JOINT**

**EXPANSION JOINT**



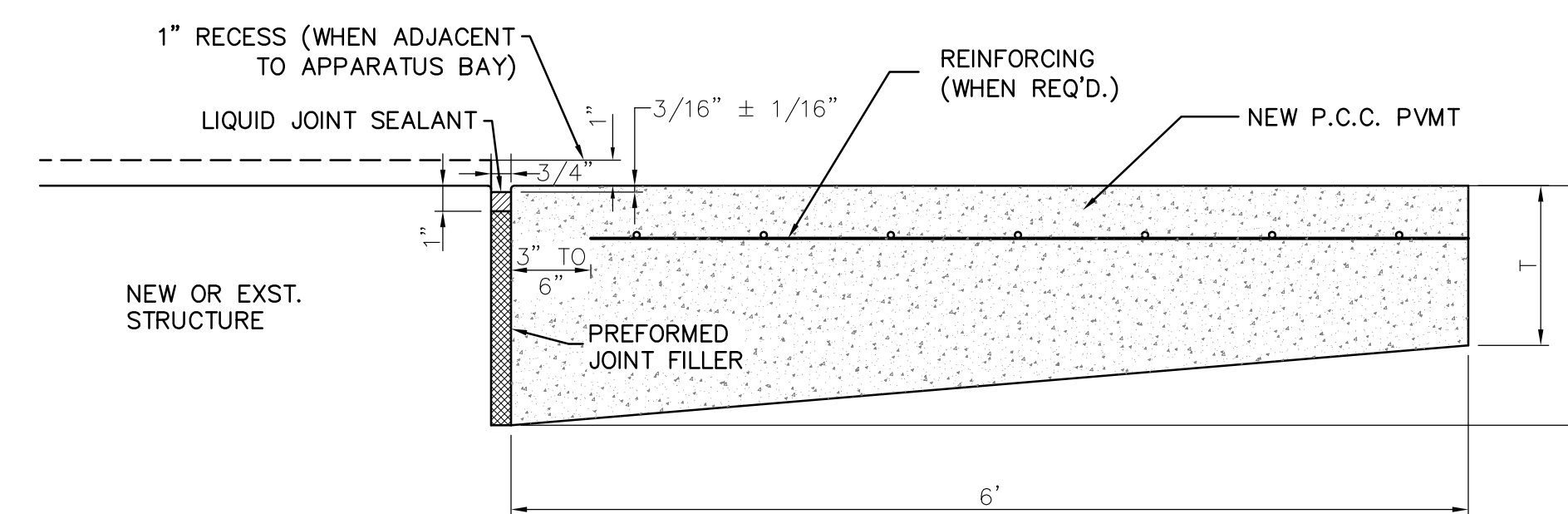
**SECTION**

**F** SIDEWALK DETAIL  
NOT TO SCALE

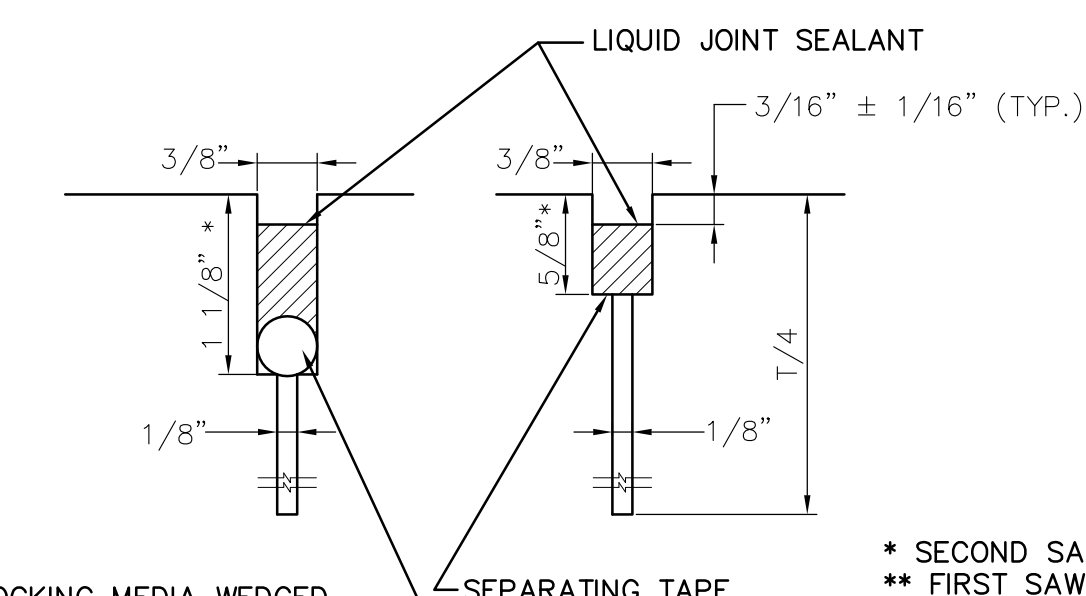


\* DEPTH OF PREFORMED JOINT FILL SHALL EQUAL DEPTH OF EXST. P.C.C. TO REMAIN PAVEMENT THICKNESS = T

**EXPANSION JOINT (E.J.)**



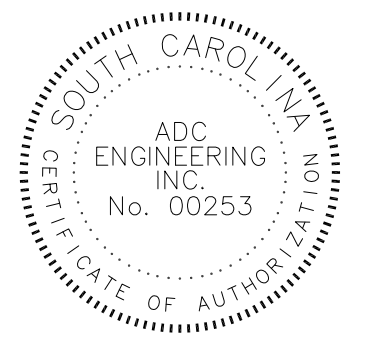
**THICKENED EDGE EXPANSION JOINT (TEEJ)**



NOTE: CONTRACTOR MAY AT HIS OPTION, PROVIDE ANY ONE OF THE ABOVE TYPES OF CONTRACTION JOINTS.

**CONTRACTION JOINTS (C.J.)**

**G** CONCRETE PAVEMENT JOINTS  
NOT TO SCALE



CONSULTANTS

Civil Engineering & Landscape Architecture:

**ADC**  
ENGINEERING SPECIALISTS  
1226 Yeomans Hall Road  
Hanahan, SC 29410  
ph: (843) 566-0161  
adcengineering.com  
ADC PROJECT NO: 12303

Structural Engineering:

**4SE**  
STRUCTURAL ENGINEERS  
7 Radcliffe Street  
Suite 301  
Charleston, SC 29403  
ph: (843) 722-1992  
4seinc.com

Mechanical, Electrical, Plumbing, Fire Protection Engineering:

**rmi**  
194 Seven Farms Drive  
Suite G  
Charleston, SC 29492  
ph: (843) 971-9639  
rmi.com

Mk	Description	Date

Project Title:  
**CITY OF GOOSE CREEK  
FIRE STATIONS**



CONSTRUCTION DOCUMENTS

Charleston, South Carolina

Drawing Title

**STATION # 3  
CIVIL DETAILS  
- PAVEMENT**

Date: 24 OCTOBER 2013

Scale: AS SHOWN

Drawing No.

**C620**

Sheet 13 of 167