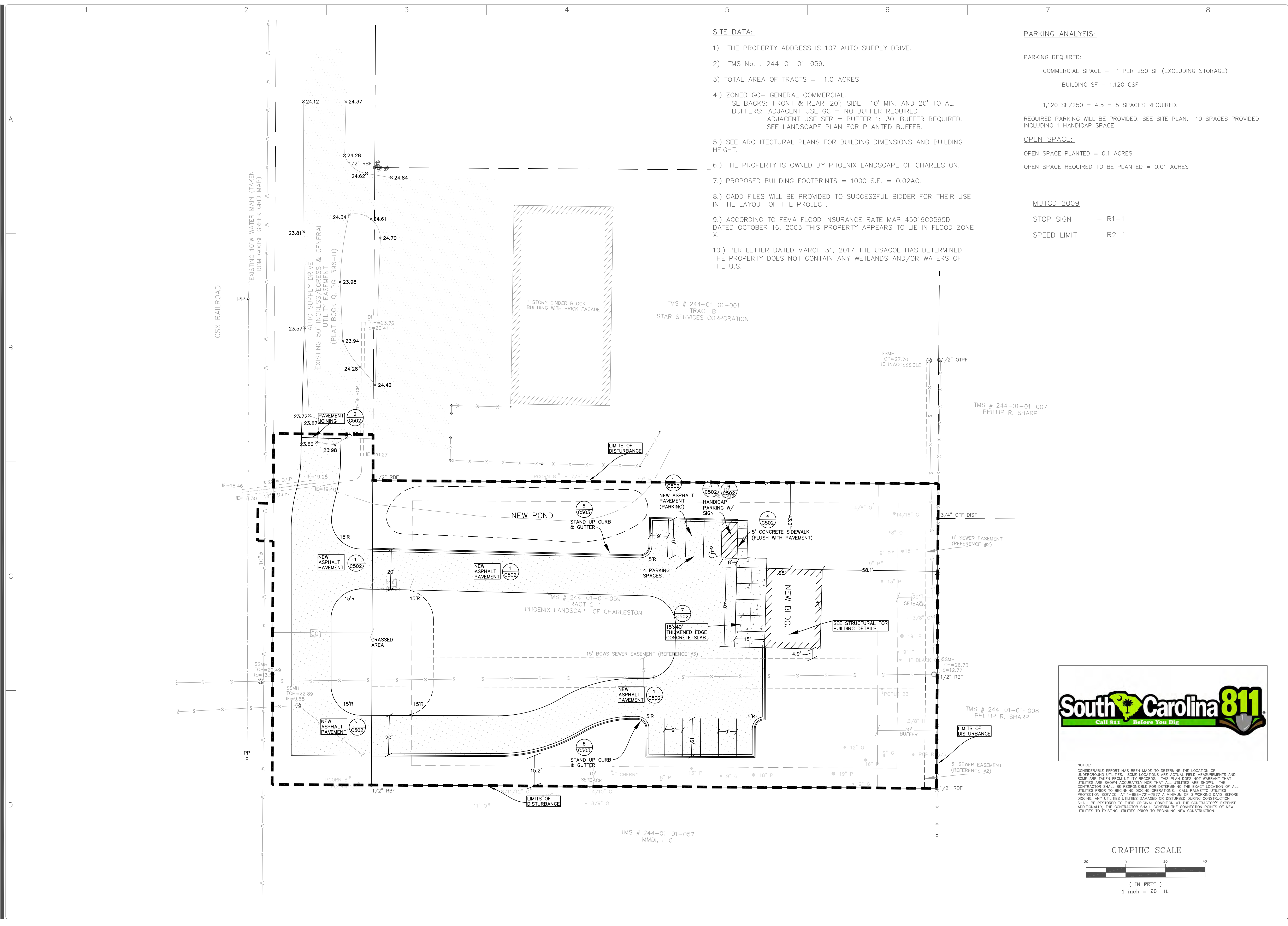
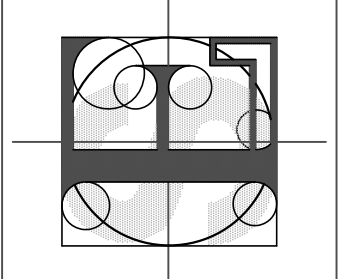


V. Old Business - Major Applications

G. Phoenix Landscaping - Site Design, Landscaping



FORSBERG ENGINEERING AND SURVEYING, INC.
 1587 SAVANNAH HIGHWAY SUITE B
 P.O. BOX 30575
 CHARLESTON, SOUTH CAROLINA 29417
 (843) 571-2622 FAX (843) 571-6780
 CIVIL, LANDSCAPE ARCHITECTURE



REGISTERED PROFESSIONAL ENGINEER
 PHILLIP R. SHARP
 STATE OF SOUTH CAROLINA
 No. 000343

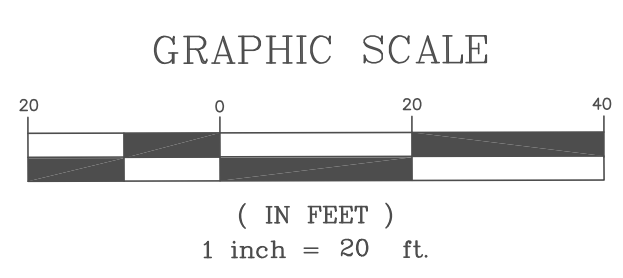
NEW SITE PLAN
 107 AUTO SUPPLY DRIVE
 BERKELEY COUNTY, CITY OF GOOSE CREEK, SOUTH CAROLINA

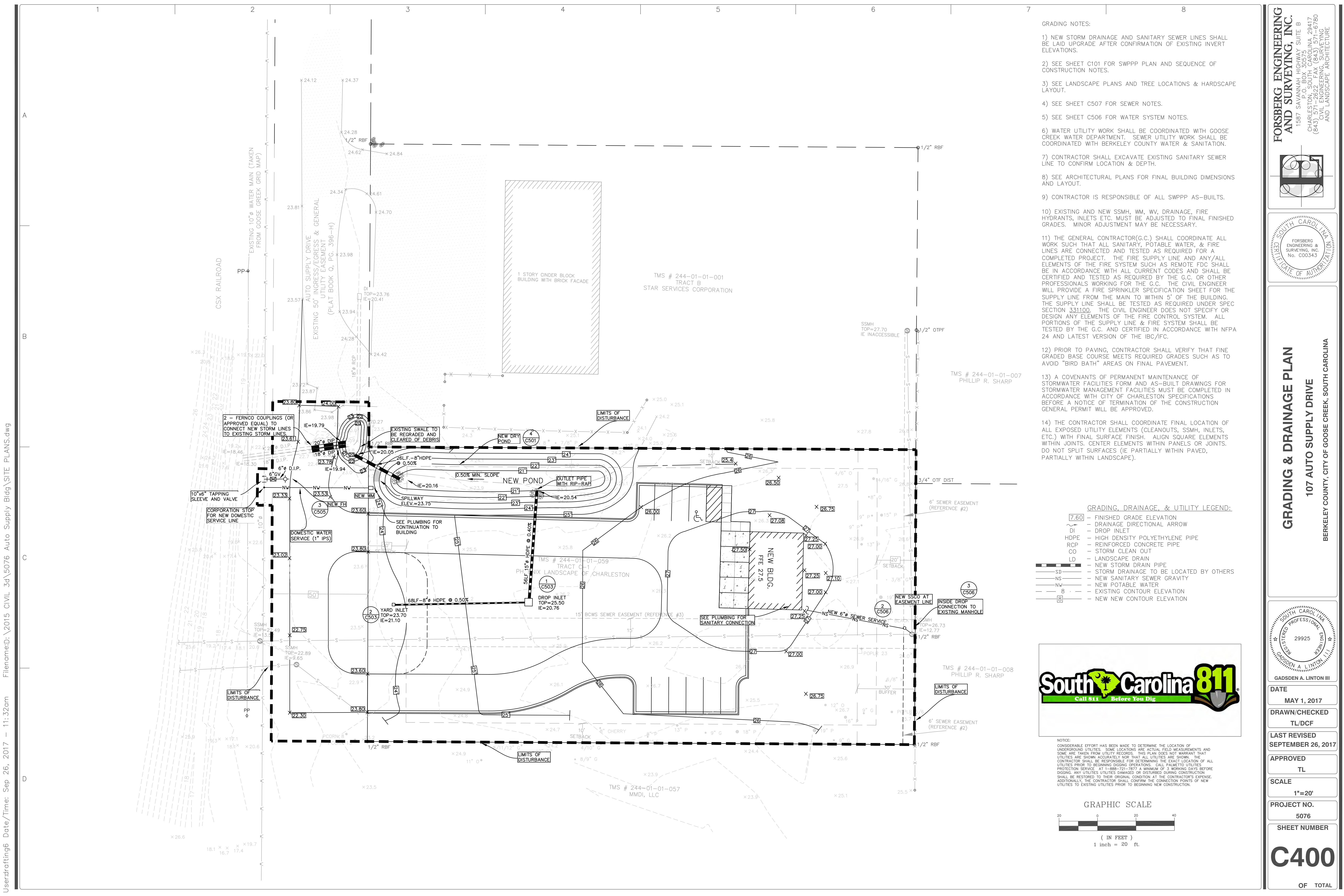
REGISTERED PROFESSIONAL ENGINEER
 GADSDEN A. LINTON III
 29925
 STATE OF SOUTH CAROLINA

DATE: MAY 1, 2017
 DRAWN/CHECKED: TL/DCF
 LAST REVISED: SEPTEMBER 26, 2017
 APPROVED: TL
 SCALE: 1"=20'
 PROJECT NO.: 5076
 SHEET NUMBER: C300
 OF TOTAL



NOTICE: CONSIDERABLE EFFORT HAS BEEN MADE TO DETERMINE THE LOCATION OF UNDERGROUND UTILITIES. SOME LOCATIONS ARE ACTUAL FIELD MEASUREMENTS AND SOME ARE TAKEN FROM UTILITY RECORDS. THIS PLAN DOES NOT WARRANT THAT UTILITIES ARE SHOWN ACCURATELY NOR THAT ALL UTILITIES ARE SHOWN. THE CONTRACTOR SHALL BE RESPONSIBLE FOR DETERMINING THE EXACT LOCATION OF ALL UTILITIES PRIOR TO BEGINNING DIGGING OPERATIONS. CALL PALMETTO UTILITIES PROTECTION SERVICE AT 1-888-721-7877 A MINIMUM OF 3 WORKING DAYS BEFORE DIGGING. ANY UTILITIES UTILITIES DAMAGED OR DISTURBED DURING CONSTRUCTION SHALL BE RESTORED TO THEIR ORIGINAL CONDITION AT THE CONTRACTOR'S EXPENSE. ADDITIONALLY, THE CONTRACTOR SHALL CONFIRM THE CONNECTION POINTS OF NEW UTILITIES TO EXISTING UTILITIES PRIOR TO BEGINNING NEW CONSTRUCTION.





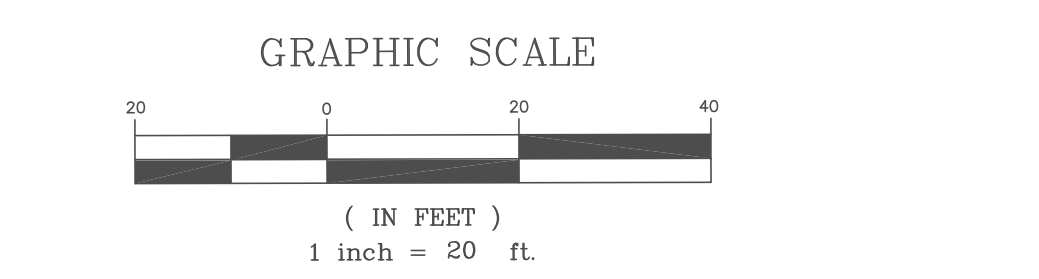
- GRADING NOTES:
- 1) NEW STORM DRAINAGE AND SANITARY SEWER LINES SHALL BE LAID UPON AFTER CONFIRMATION OF EXISTING INVERT ELEVATIONS.
 - 2) SEE SHEET C101 FOR SWPPP PLAN AND SEQUENCE OF CONSTRUCTION NOTES.
 - 3) SEE LANDSCAPE PLANS AND TREE LOCATIONS & HARDSCAPE LAYOUT.
 - 4) SEE SHEET C507 FOR SEWER NOTES.
 - 5) SEE SHEET C506 FOR WATER SYSTEM NOTES.
 - 6) WATER UTILITY WORK SHALL BE COORDINATED WITH GOOSE CREEK WATER DEPARTMENT. SEWER UTILITY WORK SHALL BE COORDINATED WITH BERKELEY COUNTY WATER & SANITATION.
 - 7) CONTRACTOR SHALL EXCAVATE EXISTING SANITARY SEWER LINE TO CONFIRM LOCATION & DEPTH.
 - 8) SEE ARCHITECTURAL PLANS FOR FINAL BUILDING DIMENSIONS AND LAYOUT.
 - 9) CONTRACTOR IS RESPONSIBLE OF ALL SWPPP AS-BUILTS.
 - 10) EXISTING AND NEW SSMH, WM, WV, DRAINAGE, FIRE HYDRANTS, INLETS ETC. MUST BE ADJUSTED TO FINAL FINISHED GRADES. MINOR ADJUSTMENT MAY BE NECESSARY.
 - 11) THE GENERAL CONTRACTOR(G.C.) SHALL COORDINATE ALL WORK SUCH THAT ALL SANITARY, POTABLE WATER, & FIRE LINES ARE CONNECTED AND TESTED AS REQUIRED FOR A COMPLETED PROJECT. THE FIRE SUPPLY LINE AND ANY/ALL ELEMENTS OF THE FIRE SYSTEM SUCH AS REMOTE FDC SHALL BE IN ACCORDANCE WITH ALL CURRENT CODES AND SHALL BE CERTIFIED AND TESTED AS REQUIRED BY THE G.C. OR OTHER PROFESSIONALS WORKING FOR THE G.C. THE CIVIL ENGINEER WILL PROVIDE A FIRE SPRINKLER SPECIFICATION SHEET FOR THE SUPPLY LINE FROM THE MAIN TO WITHIN 5' OF THE BUILDING. THE SUPPLY LINE SHALL BE TESTED AS REQUIRED UNDER SPEC SECTION 331100. THE CIVIL ENGINEER DOES NOT SPECIFY OR DESIGN ANY ELEMENTS OF THE FIRE CONTROL SYSTEM. ALL PORTIONS OF THE SUPPLY LINE & FIRE SYSTEM SHALL BE TESTED BY THE G.C. AND CERTIFIED IN ACCORDANCE WITH NFPA 24 AND LATEST VERSION OF THE IBC/IFC.
 - 12) PRIOR TO PAVING, CONTRACTOR SHALL VERIFY THAT FINE GRADED BASE COURSE MEETS REQUIRED GRADES SUCH AS TO AVOID "BIRD BATH" AREAS ON FINAL PAVEMENT.
 - 13) A COVENANTS OF PERMANENT MAINTENANCE OF STORMWATER FACILITIES FORM AND AS-BUILT DRAWINGS FOR STORMWATER MANAGEMENT FACILITIES MUST BE COMPLETED IN ACCORDANCE WITH CITY OF CHARLESTON SPECIFICATIONS BEFORE A NOTICE OF TERMINATION OF THE CONSTRUCTION GENERAL PERMIT WILL BE APPROVED.
 - 14) THE CONTRACTOR SHALL COORDINATE FINAL LOCATION OF ALL EXPOSED UTILITY ELEMENTS (CLEANOUTS, SSMH, INLETS, ETC.) WITH FINAL SURFACE FINISH. ALIGN SQUARE ELEMENTS WITHIN JOINTS. CENTER ELEMENTS WITHIN PANELS OR JOINTS. DO NOT SPLIT SURFACES (IE PARTIALLY WITHIN PAVED, PARTIALLY WITHIN LANDSCAPE).

GRADING, DRAINAGE, & UTILITY LEGEND:

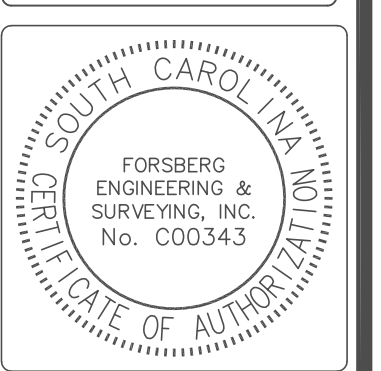
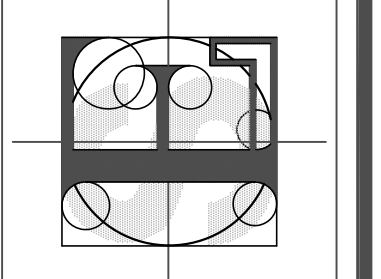
7.60	- FINISHED GRADE ELEVATION
DI	- DRAINAGE DIRECTIONAL ARROW
HDPE	- HIGH DENSITY POLYETHYLENE PIPE
RCP	- REINFORCED CONCRETE PIPE
CO	- STORM CLEAN OUT
LD	- LANDSCAPE DRAIN
SD	- NEW STORM DRAIN PIPE
NS	- NEW SANITARY TO BE LOCATED BY OTHERS
NW	- NEW POTABLE WATER
8	- EXISTING CONTOUR ELEVATION
8	- NEW CONTOUR ELEVATION



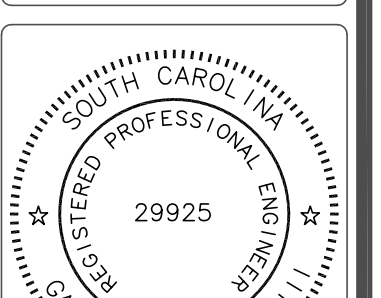
NOTICE:
CONSIDERABLE EFFORT HAS BEEN MADE TO DETERMINE THE LOCATION OF UNDERGROUND UTILITIES. SOME LOCATIONS ARE ACTUAL FIELD MEASUREMENTS AND SOME ARE TAKEN FROM UTILITY RECORDS. THIS PLAN DOES NOT WARRANT THAT UTILITIES ARE SHOWN ACCURATELY NOR THAT ALL UTILITIES ARE SHOWN. THE CONTRACTOR SHALL BE RESPONSIBLE FOR DETERMINING THE EXACT LOCATION OF ALL UTILITIES PRIOR TO BEGINNING DIGGING OPERATIONS. CALL MAINTENANCE UTILITIES PROTECTION SERVICE AT 1-888-721-7877 A MINIMUM OF 3 WORKING DAYS BEFORE DIGGING. ANY UTILITIES DAMAGED OR DISTURBED DURING CONSTRUCTION SHALL BE RESTORED TO THEIR ORIGINAL CONDITION AT THE CONTRACTOR'S EXPENSE. ADDITIONALLY, THE CONTRACTOR SHALL CONFIRM THE CONNECTION POINTS OF NEW UTILITIES TO EXISTING UTILITIES PRIOR TO BEGINNING NEW CONSTRUCTION.



FORSBERG ENGINEERING AND SURVEYING, INC.
1587 SAVANNAH HIGHWAY SUITE B
P.O. BOX 30575
CHARLESTON, SOUTH CAROLINA, 29417
(843) 571-2622 FAX (843) 571-6780
LAND SURVEYING AND LANDSCAPE ARCHITECTURE



GRADING & DRAINAGE PLAN
107 AUTO SUPPLY DRIVE
BERKELEY COUNTY, CITY OF GOOSE CREEK, SOUTH CAROLINA

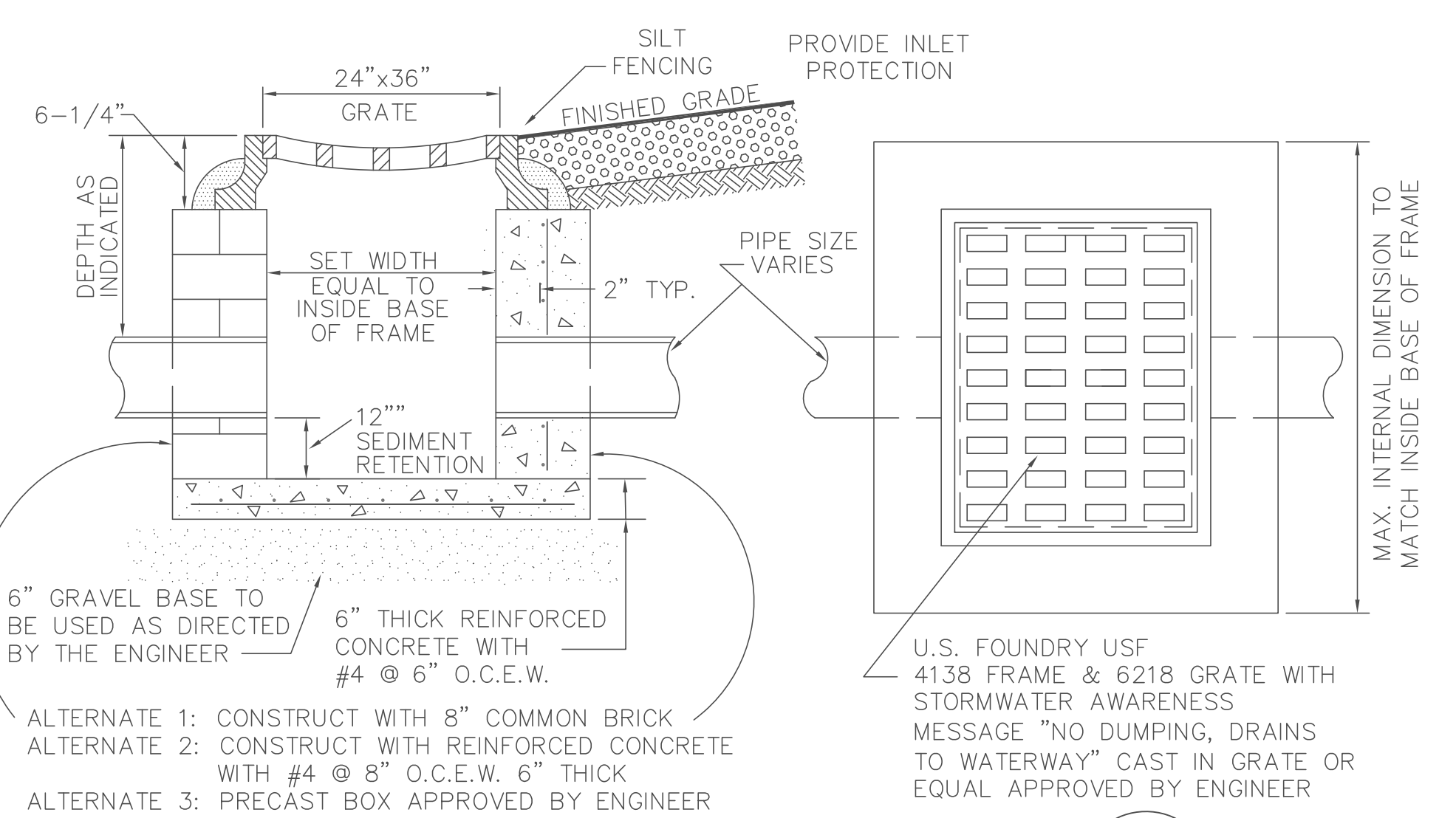


GADSDEN A. LINTON III

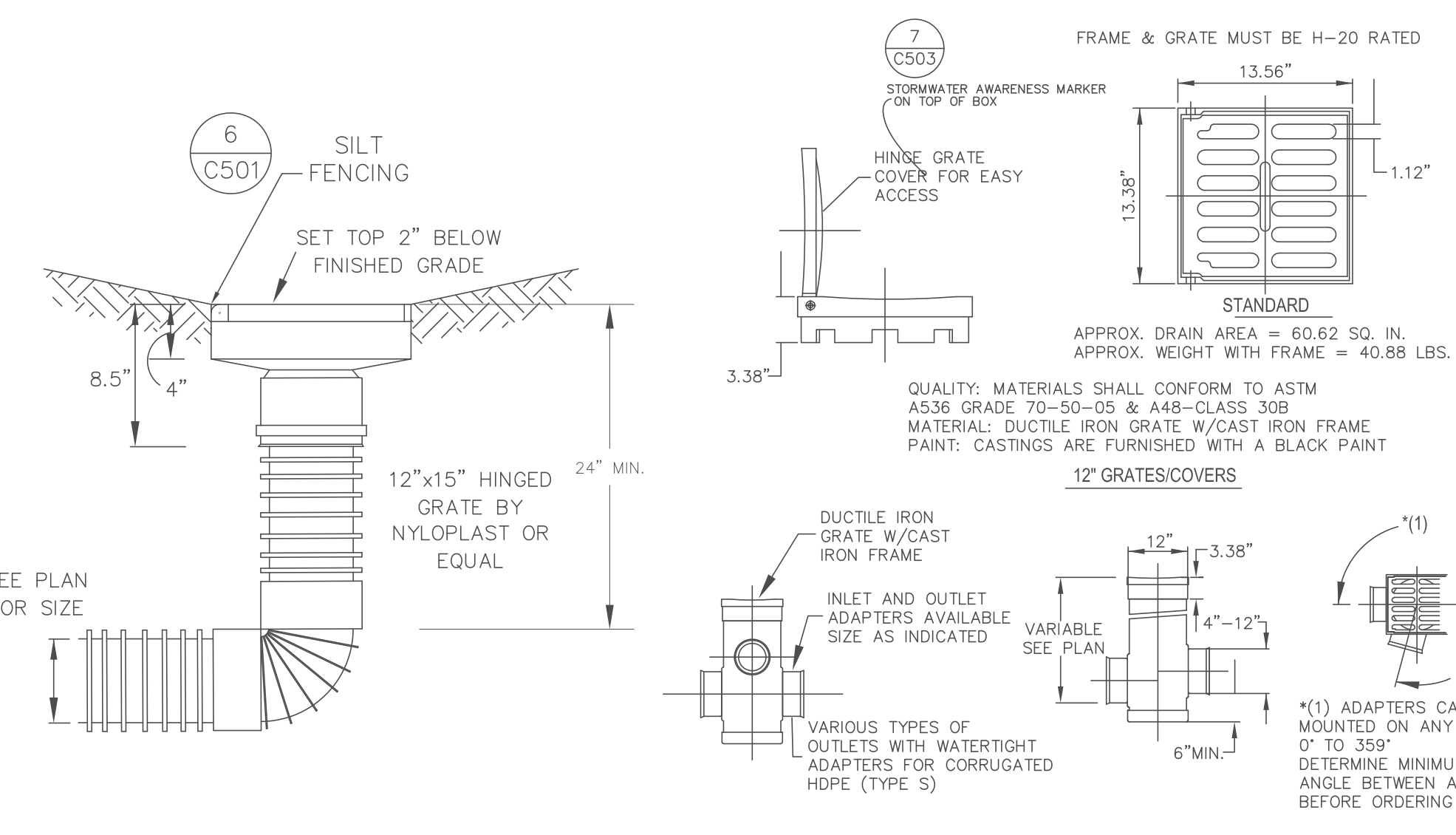
DATE	MAY 1, 2017
DRAWN/CHECKED	TL/DCF
LAST REVISED	SEPTEMBER 26, 2017
APPROVED	TL
SCALE	1"=20'
PROJECT NO.	5076
SHEET NUMBER	C400
OF TOTAL	

User:drafter Date: Sep 26, 2017 11:32am File:2015 CIVIL 3d\5076 Auto Supply Bldg\SITE PLANS.dwg

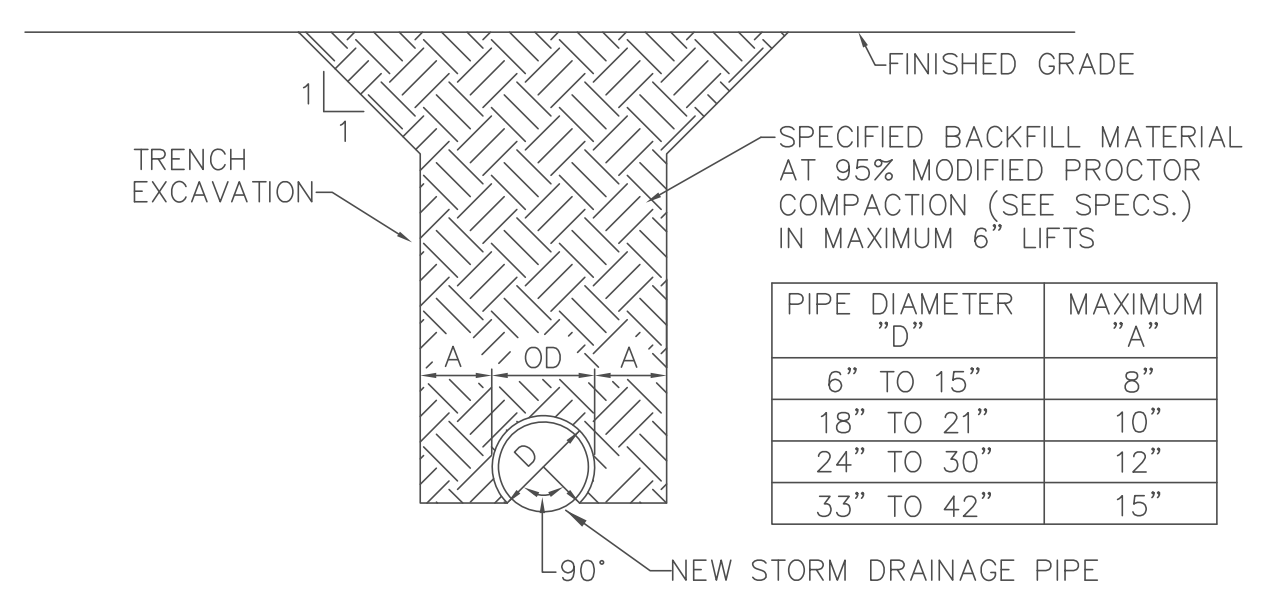
Userdrafting6 Date/Time: Sep 26, 2017 - 11:24am Filename:D:\2015 CIVIL 3d\5076 Auto Supply Bldg\AUTO SUPPLY DETAILS.dwg



DROP INLET DETAIL 1
NOT TO SCALE
C503

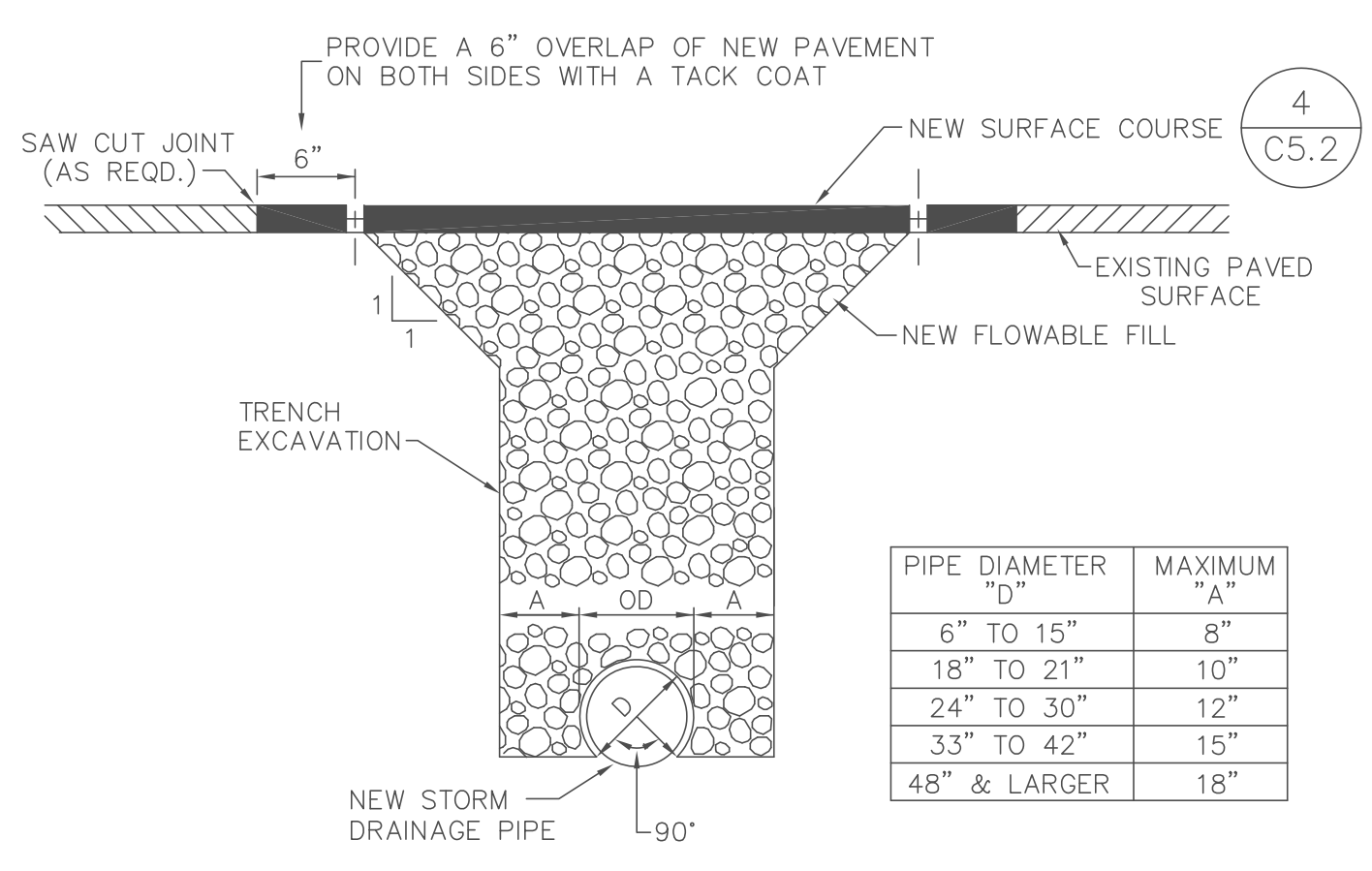


DROP INLET / YARD DRAIN 2
NOT TO SCALE
C503



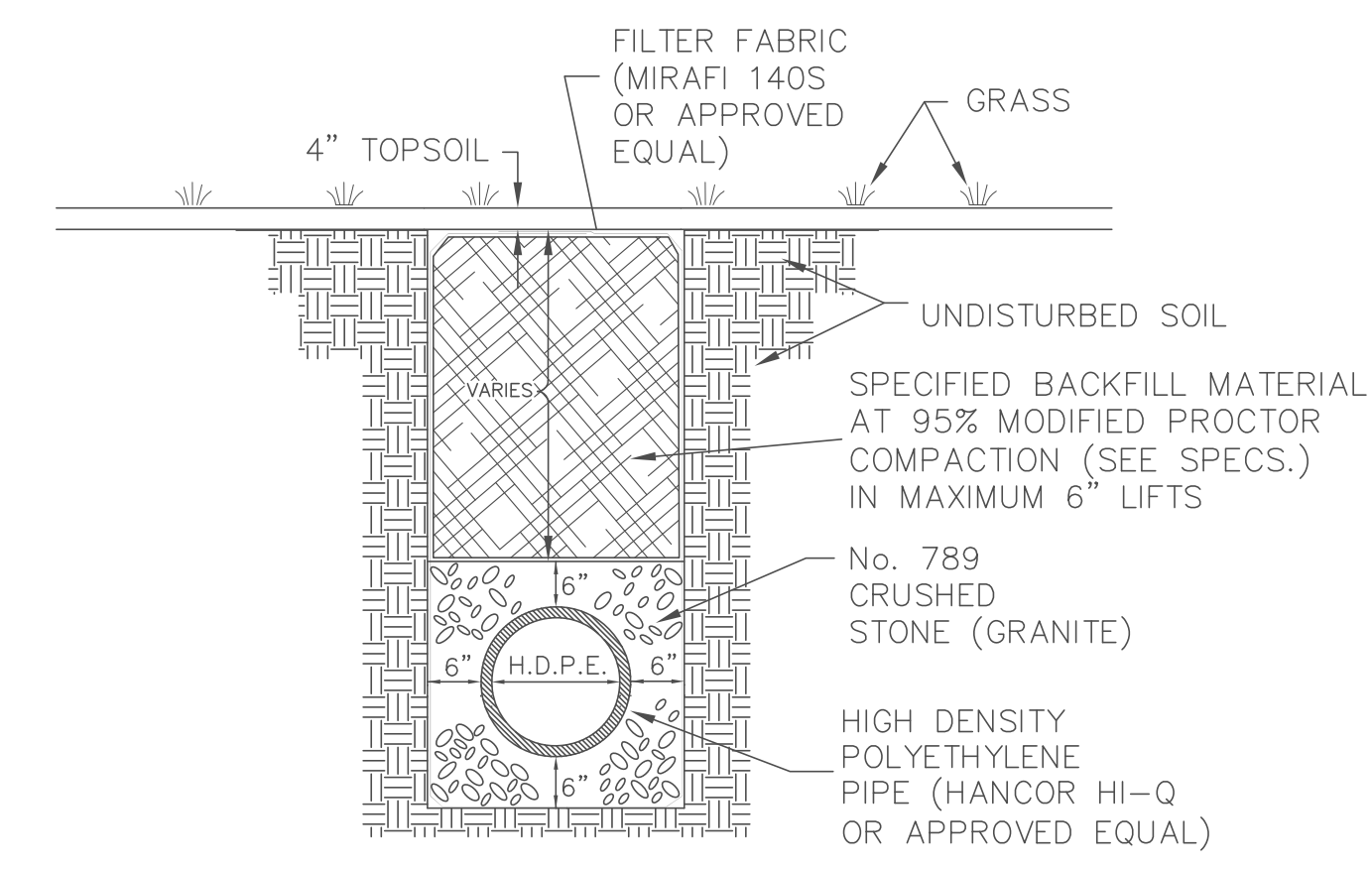
STORM DRAIN TRENCH DETAIL 3
NOT TO SCALE
C503

PIPE DIAMETER "D"	MAXIMUM "A"
6" TO 15"	8"
18" TO 21"	10"
24" TO 30"	12"
33" TO 42"	15"

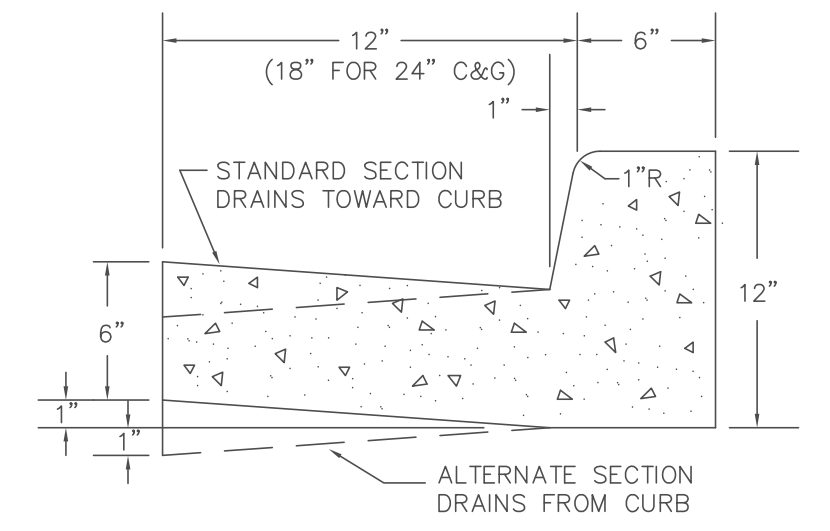


PAVEMENT TRENCHING DETAIL 5
NOT TO SCALE
C503

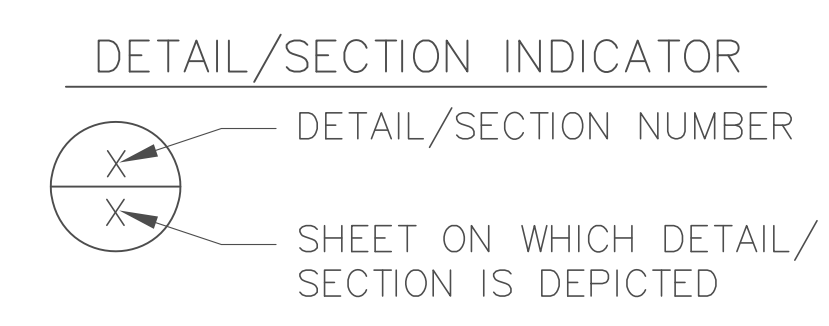
PIPE DIAMETER "D"	MAXIMUM "A"
6" TO 15"	8"
18" TO 21"	10"
24" TO 30"	12"
33" TO 42"	15"
48" & LARGER	18"



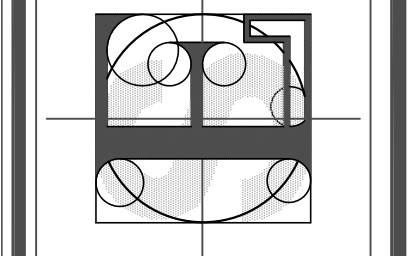
HIGH DENSITY POLYETHYLENE DRAINAGE PIPE TRENCH DETAIL 4
NOT TO SCALE
C503



CONCRETE CURB DETAIL 6
NOT TO SCALE
C503



FORSBERG ENGINEERING AND SURVEYING, INC.
1587 SAVANNAH HIGHWAY SUITE B
P.O. BOX 30575
CHARLESTON, SOUTH CAROLINA 29417
(843) 571-2622 FAX (843) 571-6780
LANDSCAPE ARCHITECTURE



FORSBERG ENGINEERING & SURVEYING, INC.
No. C00343

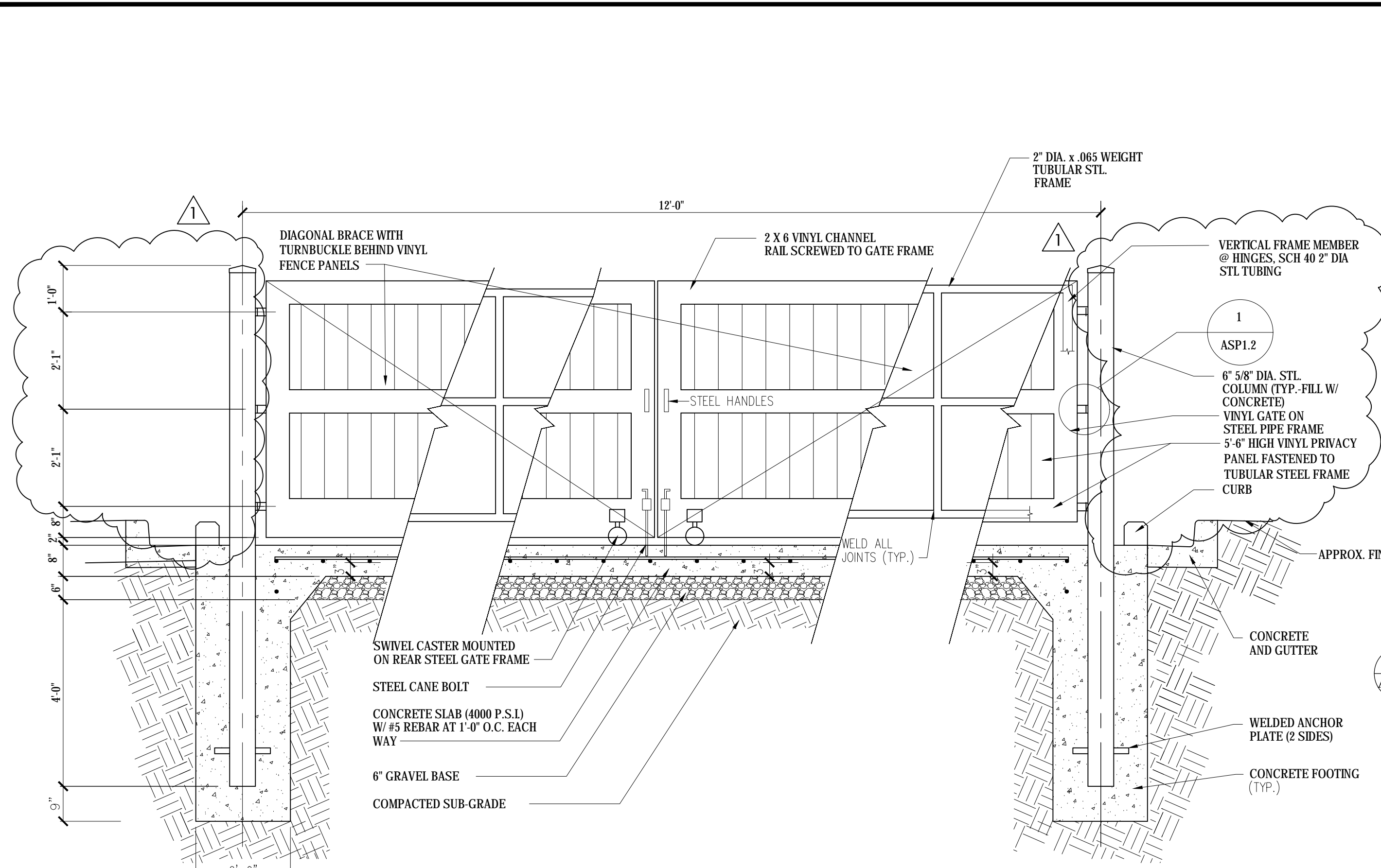
CONSTRUCTION DETAILS
107 AUTO SUPPLY DRIVE
BERKELEY COUNTY, CITY OF GOOSE CREEK, SOUTH CAROLINA



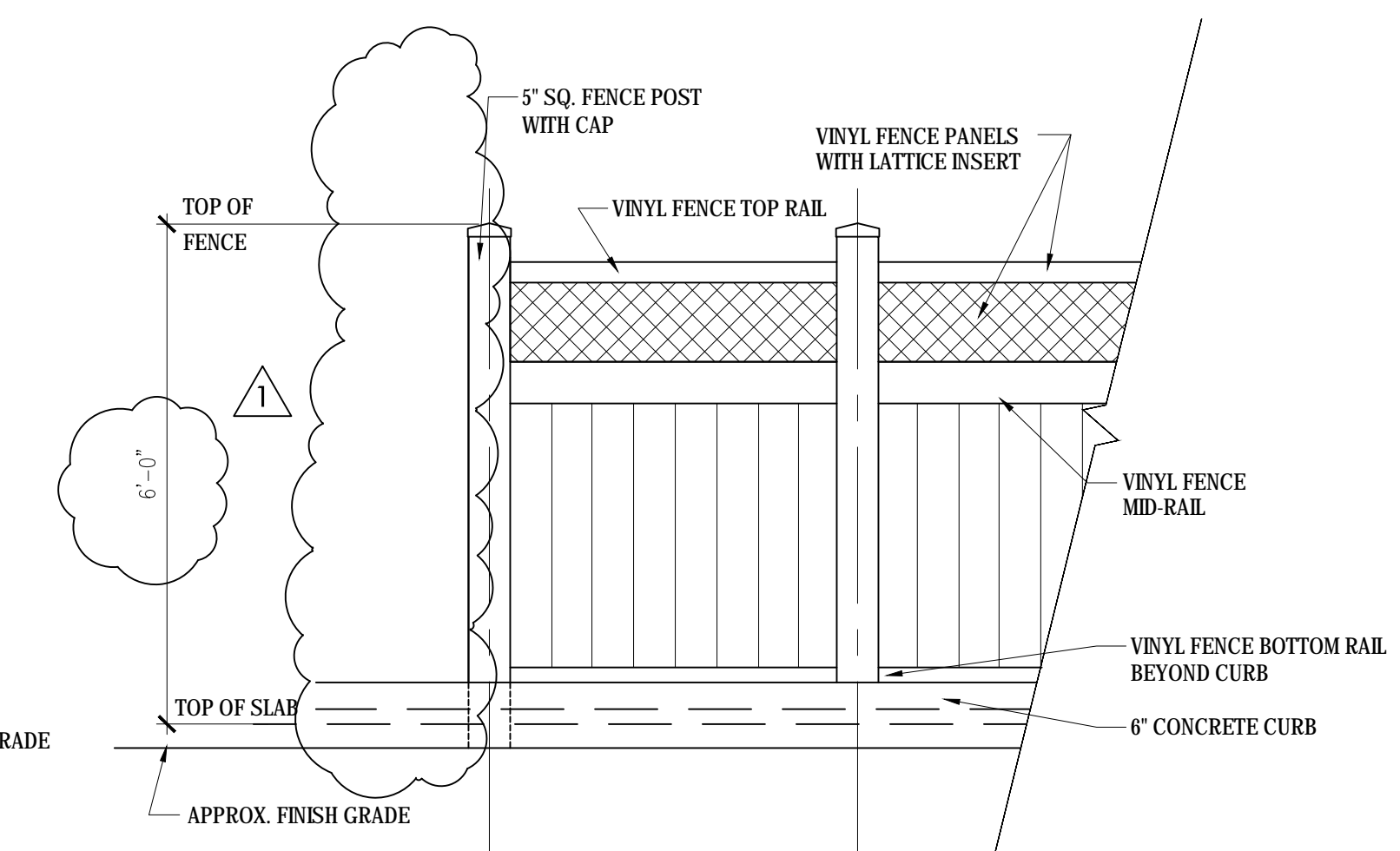
GADSDEN A. LINTON III
DATE: MAY 1, 2017
DRAWN/CHECKED: TL/DCF
LAST REVISED: SEPTEMBER 26, 2017
APPROVED: TM
SCALE: SCALE
PROJECT NO.: 5076
SHEET NUMBER: C503 OF TOTAL

V. New Business - Major Applications

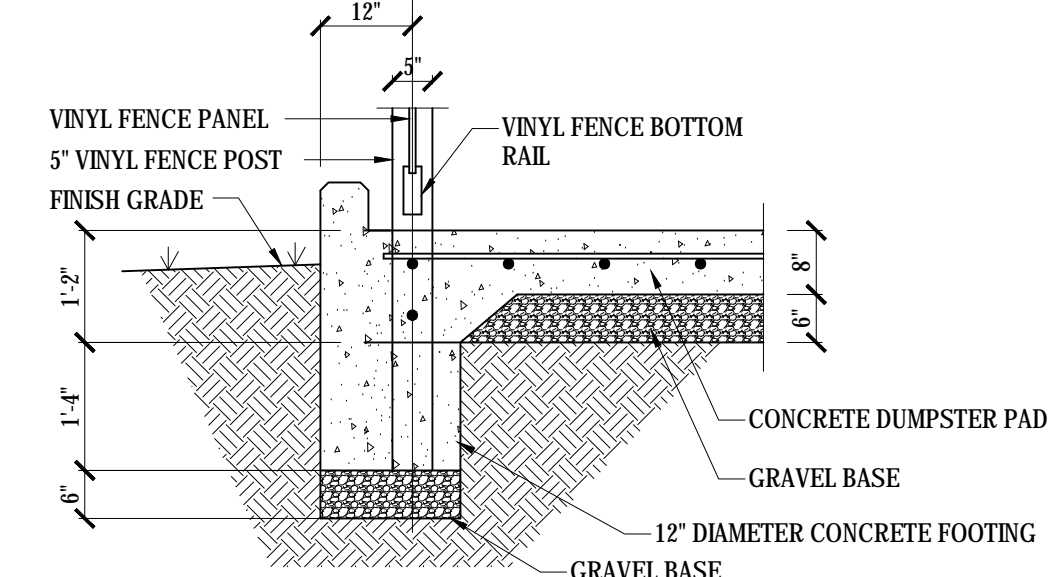
**G. Agape Hospice - Site Design, Landscaping, Elevations,
Lighting, Materials**



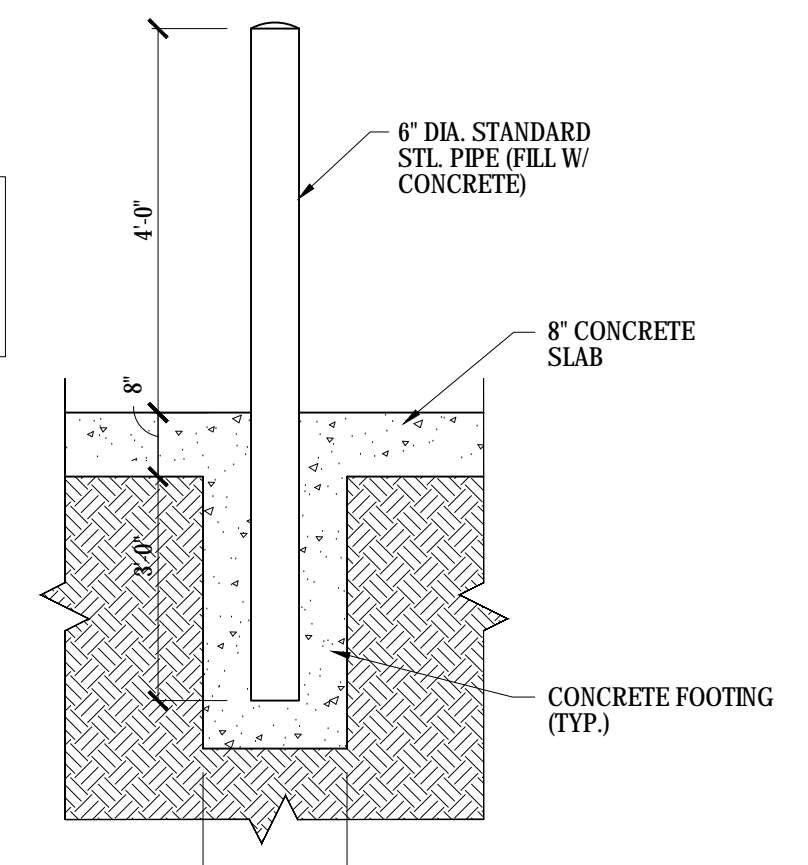
3 DUMPSTER GATE ELEVATION/SECTION
SCALE: 1/2" = 1'-0"



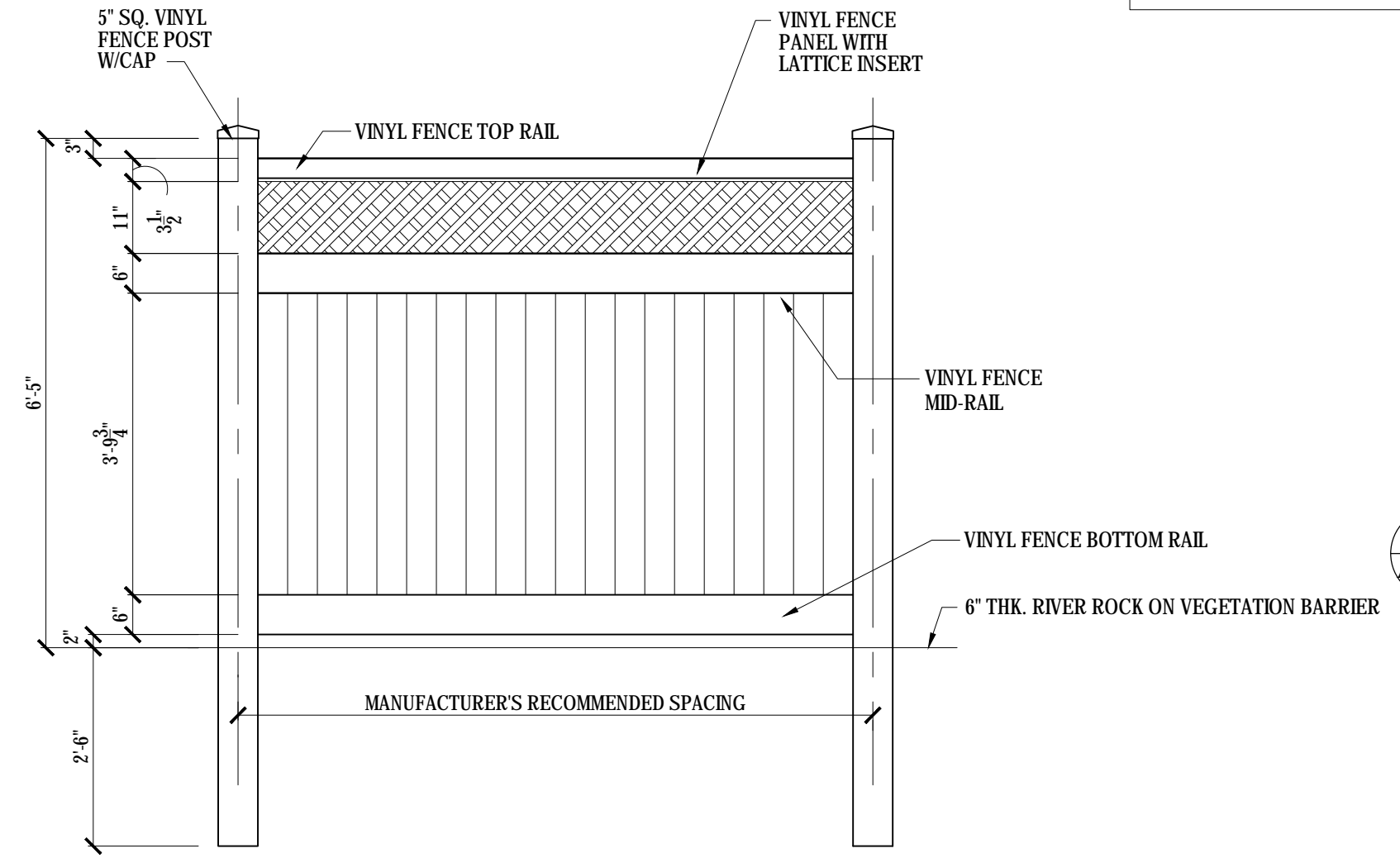
4 SIDE DUMPSTER FENCE ELEVATION
SCALE: 1/2" = 1'-0"



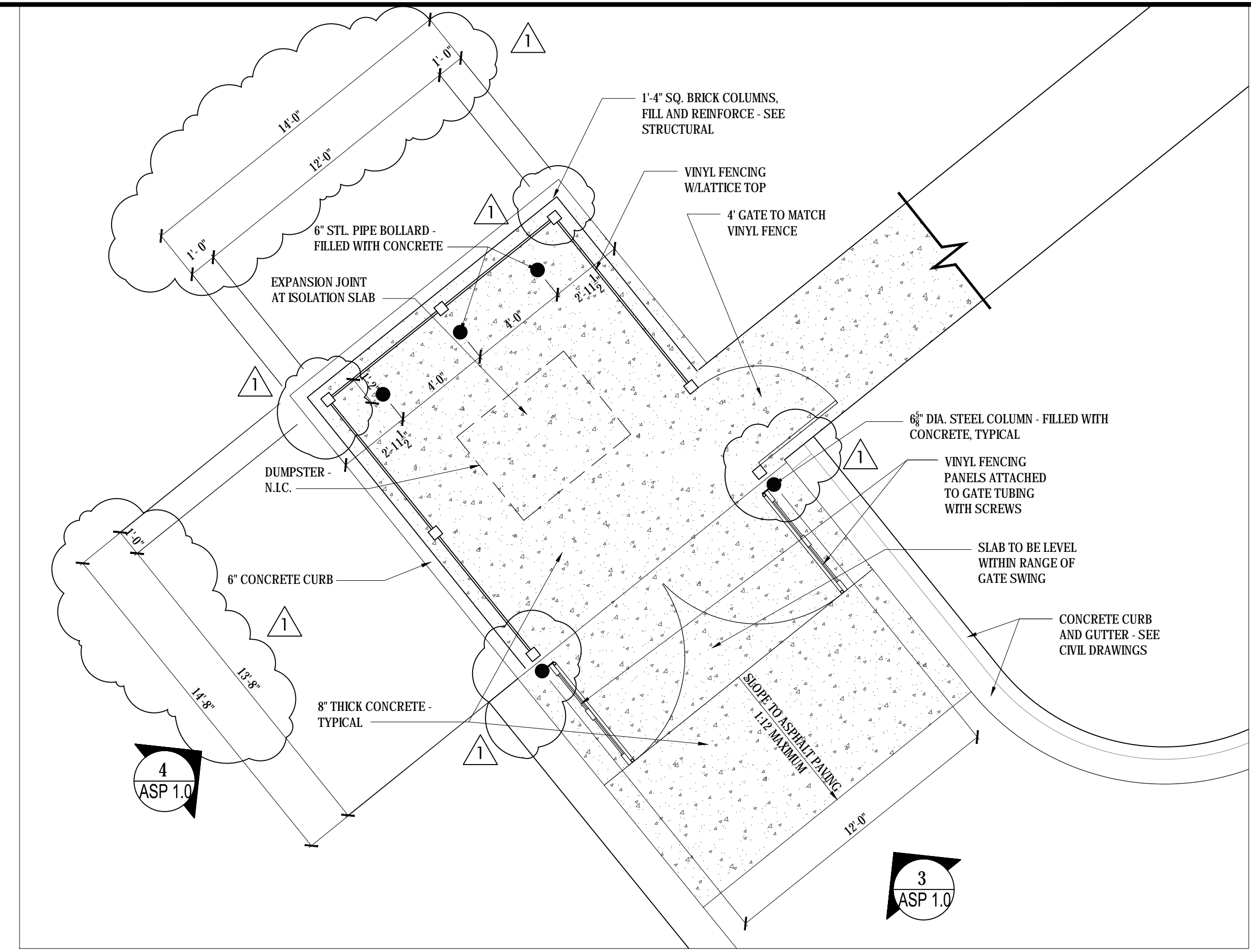
8 CURB DETAIL
SCALE: 1/2" = 1'-0"



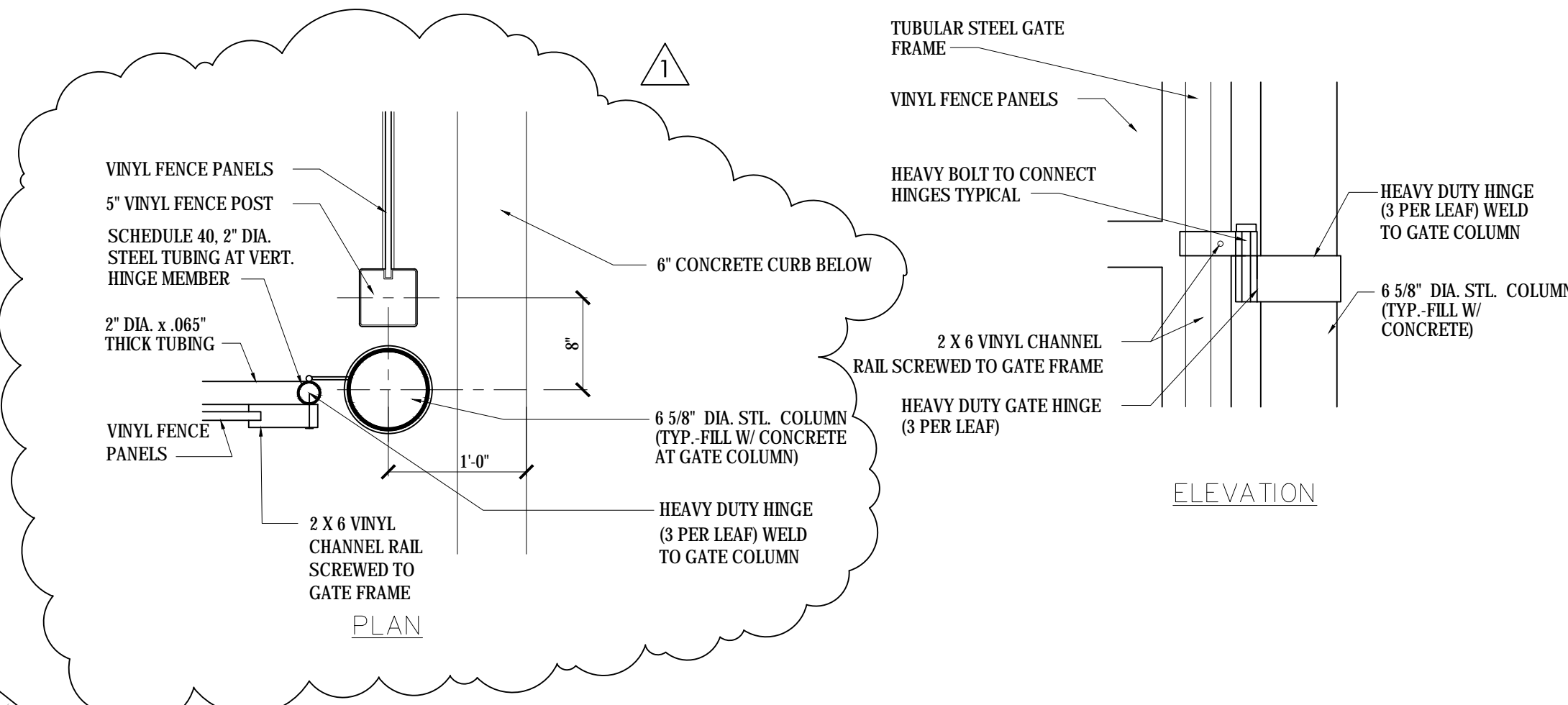
7 PIPE BOLLARD DETAIL
SCALE: 1/2" = 1'-0"



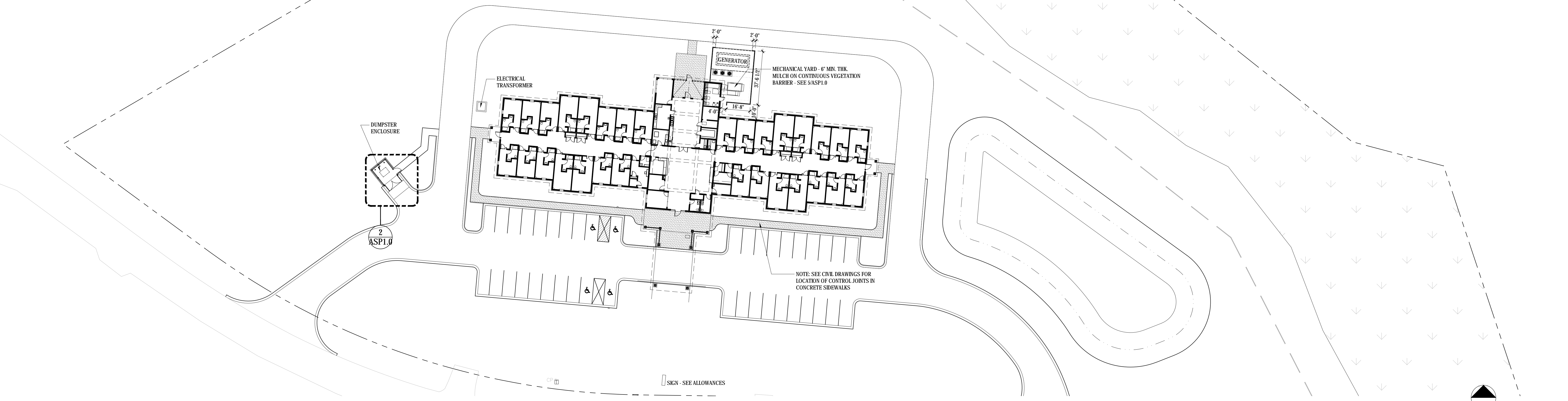
5 MECHANICAL YARD FENCE DETAIL
SCALE: 1/2" = 1'-0"



2 DUMPSTER ENCLOSURE DETAIL
SCALE: 1/4" = 1'-0"



6 GATE AND POST CONNECTION DETAILS
SCALE: 1" = 1'-0"



1 ARCHITECTURAL SITE PLAN
SCALE: 1" = 30'-0"

INFORMATION CONTAINED ON THESE DRAWINGS IS PART OF THE CONSULTANT'S INSTRUMENTS OF SERVICE, AND THE CONSULTANT SHALL RETAIN OWNERSHIP THEREOF. SUCH INFORMATION SHALL NOT BE USED FOR ANY PURPOSE OTHER THAN FOR THE CONSTRUCTION OF THE REFERENCED PROJECT. ANY OTHER USE, REUSE OR MODIFICATION OF THE DOCUMENTS WITHOUT THE CONSULTANT'S PRIOR WRITTEN CONSENT WILL BE AT THE RECIPIENT'S SOLE RISK AND WITHOUT LIABILITY OR LEGAL EXPOSURE TO THE CONSULTANT.

THE ARCHITECTURAL RESOURCE
816 Lafayette Avenue
Cayce, SC 29033
803.960.9524

NO.	DATE	DESCRIPTION
1	11/06/2017	ISSUED FOR PERMIT

NO.	DATE	DESCRIPTION

AGAPE HOUSE OF THE LOWCOUNTRY
30 Bed Hospice
374 / 376 Myers Road
Summerville, S.C.

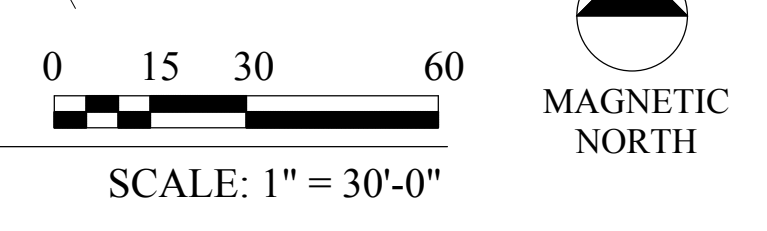
© 2017
THE ARCHITECTURAL RESOURCE, LLC

PROJECT NO.: 17-0302
DATE: 10/18/2017
DRAWN BY: TC2

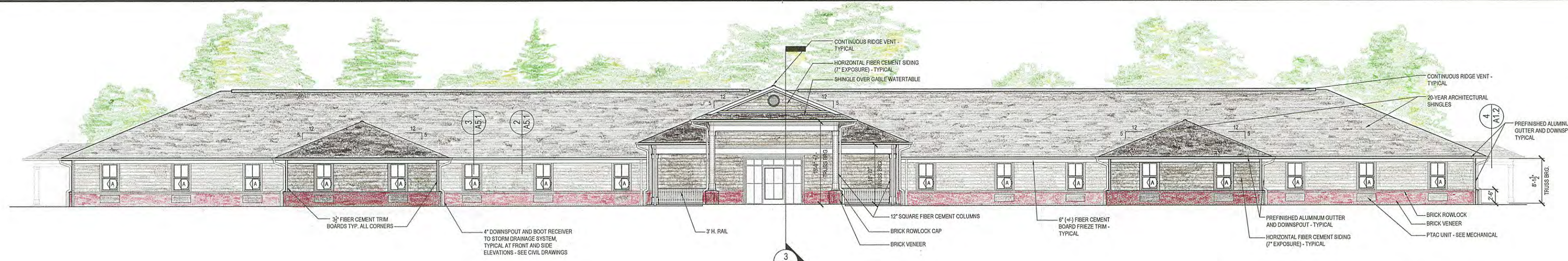
ARCHITECTURAL SITE PLAN

SHEET NO.:

ASP1.0

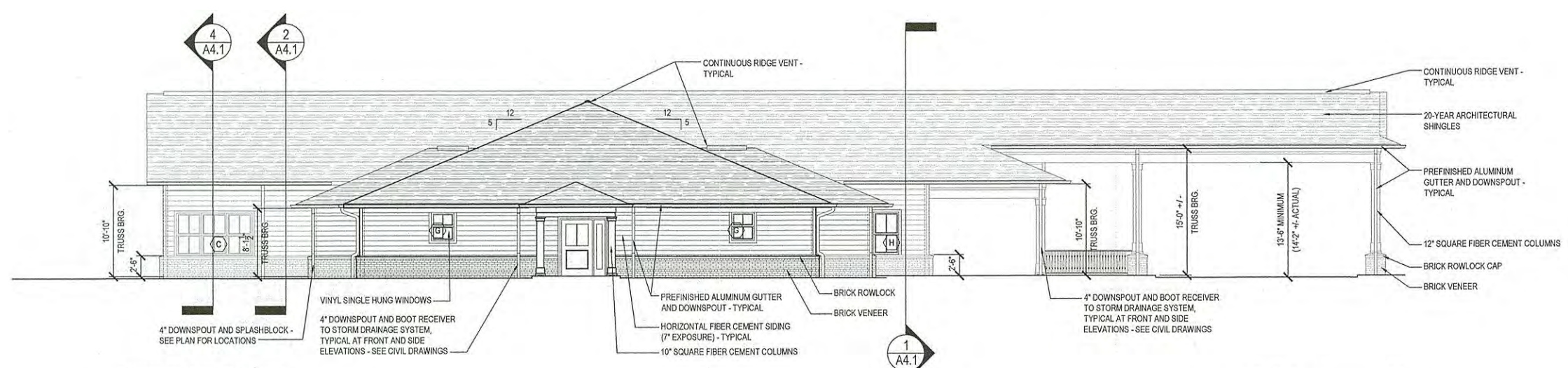


100% PERMIT SET



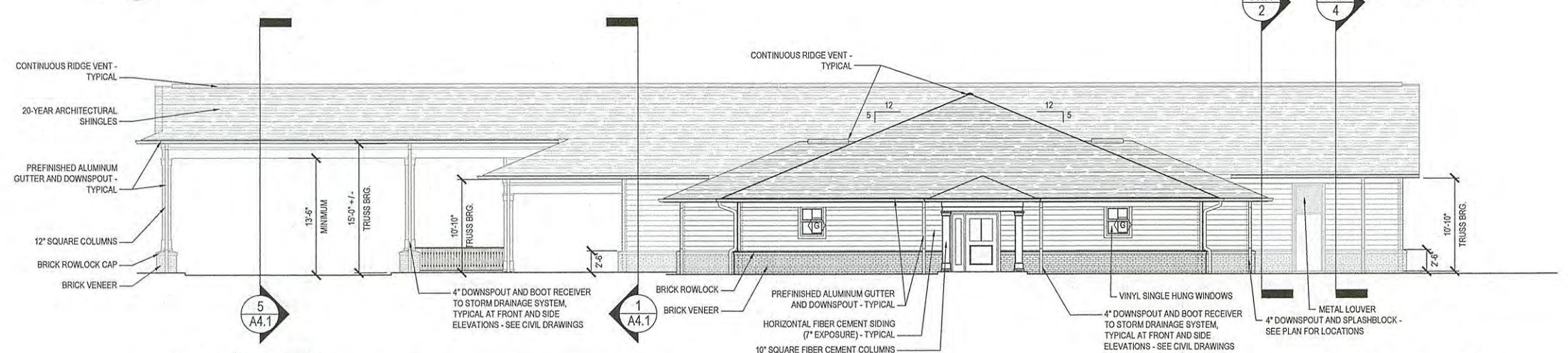
1
A2.1
FRONT ELEVATION
EXTERIOR ELEVATION

0 2 4 8 16
SCALE: 1/8" = 1'-0"



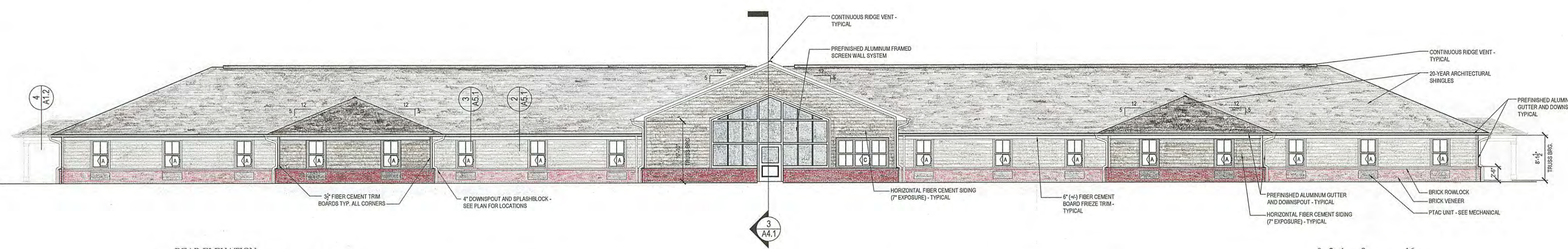
2
A2.1
RIGHT SIDE ELEVATION
EXTERIOR ELEVATION

0 2 4 8 16
SCALE: 1/8" = 1'-0"



3
A2.1
LEFT SIDE ELEVATION
EXTERIOR ELEVATION

0 2 4 8 16
SCALE: 1/8" = 1'-0"



4
A2.1
REAR ELEVATION
EXTERIOR ELEVATION

0 2 4 8 16
SCALE: 1/8" = 1'-0"

INFORMATION CONTAINED ON THESE DRAWINGS IS PART OF THE CONSULTANT'S INSTRUMENTS OF SERVICE, AND THE CONSULTANT SHALL RETAIN OWNERSHIP THEREOF. SUCH INFORMATION SHALL NOT BE USED FOR ANY PURPOSE OTHER THAN FOR THE CONSTRUCTION OF THE REFERENCED PROJECT. ANY OTHER USE, REUSE OR MODIFICATION OF THE DOCUMENTS WITHOUT THE CONSULTANT'S PRIOR WRITTEN CONSENT WILL BE AT THE RECIPIENT'S SOLE RISK AND WITHOUT LIABILITY OR LEGAL EXPOSURE TO THE CONSULTANT.

THE ARCHITECTURAL RESOURCE
 816 Lafayette Avenue
 Cayce, South Carolina 29033
 803-960-9988

REVISIONS

AGAPE HOUSE OF THE LOWCOUNTRY
 30 Bed Hospice
 374 / 376 Myers Road
 Summerville, S.C.

© 2017
 THE ARCHITECTURAL
 RESOURCE, LLC

PROJECT NO.:
 17-0302
 DATE:
 10/03/2017
 DRAWN BY:
 TC2

EXTERIOR ELEVATIONS

SHEET NO.:

A2.1

PLANT SCHEDULE

TREES					
QNTY	ABBRV	SCIENTIFIC NAME	COMMON NAME	PLANTING SIZE	MISCELLANEOUS / REMARKS
4	JAF	Ilex x attenuata 'Foster's #2'	Foster's Holly	B & B OR CONT. : 1-1/2" CAL. : 8' - 10' x 4'	AS SHOWN Specimen, full to ground
5	LIM	Lagerflratia indica 'Muskogee'	'Muskogee' Crepe Myrtle	B & B OR CONT. : 10' - 12' HT.	AS SHOWN Specimen, multi-trunk, 3 trunk min
4	QV	Quercus muhlenbergii	Nutlet Oak	B & B OR CONT. : 2-1/2" CAL. : 14' - 16' HT.	AS SHOWN Specimen
4	QP	Quercus phellos	Willow Oak	B & B OR CONT. : 2 1/2" CAL. : 14' - 16' HT.	AS SHOWN Specimen
9	QV-ST	Quercus virginiana	Live Oak	B & B OR CONT. : 3" CAL.	AS SHOWN Specimen
3	TD	Taxodium distichum	Bald Cypress	B & B OR CONT. : 2" CAL. : 14' HT.	AS SHOWN Specimen
PALMS					
QNTY	ABBRV	SCIENTIFIC NAME	COMMON NAME	PLANTING SIZE	MISCELLANEOUS / REMARKS
4	SP-16	Sabal palmetto	Sabal Palm	BR : 16" HT., CLEAR TRUNK	AS SHOWN SPECIMEN, REFOLIATED PALMS HEADS
SHRUBS					
QNTY	ABBRV	SCIENTIFIC NAME	COMMON NAME	PLANTING SIZE	MISCELLANEOUS / REMARKS
10	AZGT	Azalea indica 'George L. Tober'	'George L. Tober' Azalea	CONT. : 18" x 18"	AS SHOWN Full
16	BUMJ	Buxus microphylla 'Japanica'	Japanese Littleleaf Boxwood	CONT. : 14" x 14"	AS SHOWN Full
14	GARR	Gardenia jasminoides 'Radicans'	Dwarf Gardenia	CONT. : 12" x 12"	AS SHOWN Full
14	ILCA	Ilex cornuta 'Carissa'	Carissa Holly	CONT. : 18" x 18"	AS SHOWN Full
29	LJUF	Ligustrum japonicum 'Jack Frost'	Jack Frost Privet	CONT. : 24" HT.	AS SHOWN Full, plant as shown
47	LSS	Ligustrum sinense 'Sunshine' PP20379	'Sunshine' Ligustrum	CONT. : 20" x 20"	AS SHOWN Full
19	LOR	Loropetalum chinense 'Ruby'	Evergreen Loropetalum 'Ruby'	CONT. : 18" x 18"	AS SHOWN Full
15	MC	Myrica verticillata	Wax Myrtle	CONT. : 36" HT.	AS SHOWN Full to Ground
40	ROSR	Rosa 'Maimourat'	Pink Drift® Rosa	CONT. : 14" x 14"	AS SHOWN Full to Ground
22	VIBO	Viburnum Obovatum 'Mrs. Schiller's Delight'	Viburnum 'Mrs. Schiller's Delight'	CONT. : 18" x 18"	AS SHOWN Full
ORNAMENTAL GRASSES AND GROUNDCOVERS					
QNTY	ABBRV	SCIENTIFIC NAME	COMMON NAME	PLANTING SIZE	MISCELLANEOUS / REMARKS
86	DIAC	Dianella isomacris 'Variegata'	Variegated Flax Lily	CONT. : 18" x 18"	Full
50,500	SOD	Eremochloa ophiuroides	Centipede Grass		Dense roots
117	LIBB	Liriodie muscari 'Big Blue'	Big Blue Liriope	CONT. : 6" x 10"	Full
124	SPAR	Spartina bakeri	Cord Grass	CONT. : 6" - 8" HT.	Full

SUMMARY

151.083 Landscaping Requirements

(A) At least 10% of each lot shall be landscaped in a manner approved by the Zoning Administrator.

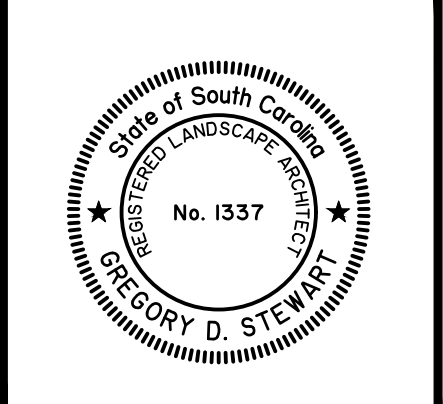
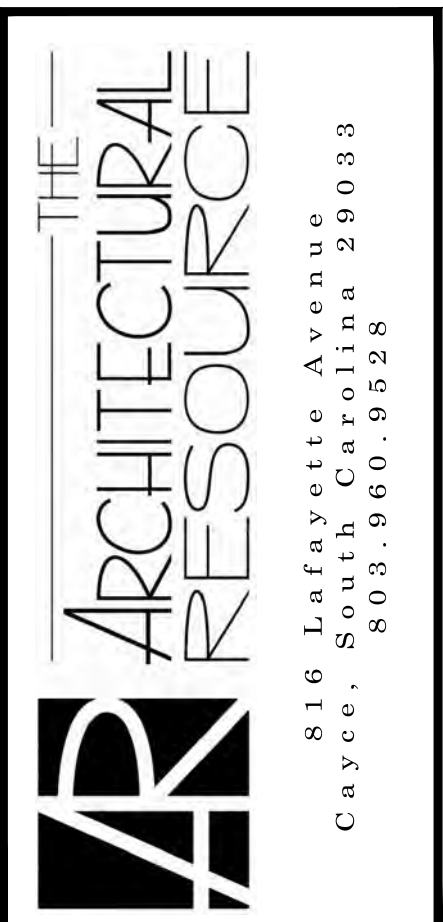
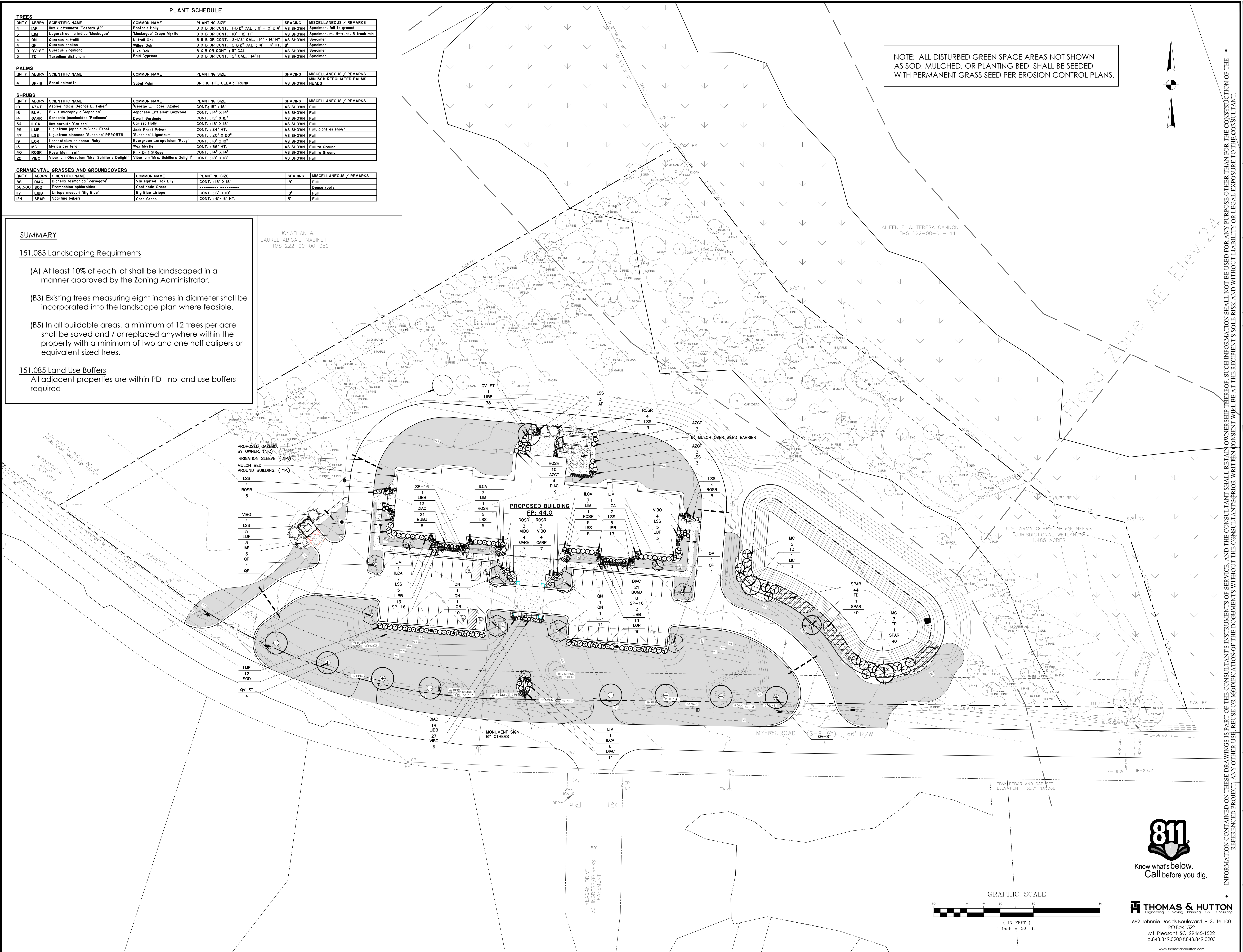
(B3) Existing trees measuring eight inches in diameter shall be incorporated into the landscape plan where feasible.

(B5) In all buildable areas, a minimum of 12 trees per acre shall be saved and / or replaced anywhere within the property with a minimum of two and one half calipers or equivalent sized trees.

151.085 Land Use Buffers
All adjacent properties are within PD - no land use buffers required

JONATHAN & LAUREL ABIGAIL INABINET
TMS 222-00-00-089

NOTE: ALL DISTURBED GREEN SPACE AREAS NOT SHOWN AS SOD, MULCHED, OR PLANTING BED, SHALL BE SEEDED WITH PERMANENT GRASS SEED PER EROSION CONTROL PLANS.



REVISIONS

NO.	DATE	DESCRIPTION

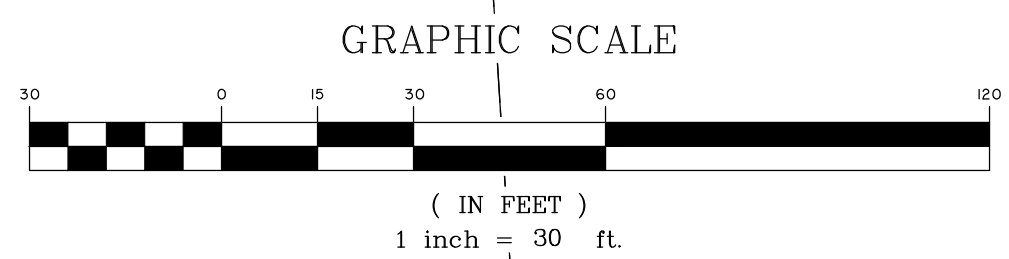
AGAPE HOUSE OF THE LOWCOUNTRY
30 Bed Hospice
374 / 376 Myers Road
Summerville, S.C.

© 2017
THE ARCHITECTURAL RESOURCE, LLC

PROJECT NO.: 17-0302
DATE: 10/18/2017
DRAWN BY: GDS

LANDSCAPE PLAN

SHEET NO.: **L1.1**



THOMAS & HUTTON
Engineering | Surveying | Planning | GIS | Consulting
682 Johnnie Dodds Boulevard • Suite 100
PO Box 1522
Mt. Pleasant, SC 29465-1522
P. 843.849.0200 F. 843.849.0203
www.thomashutton.com

100% PERMIT SET

Z:\38440284\0000\Land Planning\Drawings\Construction Plans\28440_0000 - LS_PL.dwg 11/22/2017 3:29:18 PM



Color Photo of Similar Building with proposed color scheme
Agape House of the LowCountry

Outdoor Lighting Lamp Types

HPS: High pressure sodium is the most efficient lighting available and are widely used for outdoor lighting such as street-lights and security lighting. It provides the most light for the monthly fee. The light color is a pink/orange.

MH: Metal halide produces a high light output for their size, making them a compact, powerful, and efficient light source. It is frequently used to illuminate large areas where color is very important. The light color is closest to natural lighting or white. This type of light is not available in all lighting options.



Lighting Prices

For the most up-to-date prices please contact your local district office. Prices quoted for the Standard Outdoor Lighting Schedule and Cobrahead are for the fixture mounted on a 30' wood pole with overhead service. The quotes for the Post Top Colonial, Shoebox and Acorn are based on a BEC-provided pole and underground service.

Lighting Options


Many options and custom installations are available. Berkeley Electric's lighting contract is for 5 years. Outdoor lighting must meet local lighting codes. Ask BEC for more details.

Lighting Outage Service

If you notice that an outdoor security light installed by Berkeley Electric appears to be malfunctioning, please call us immediately. BEC will ensure that repairs are made within 3 to 5 businesses days after the report is received.

Exhibit E



Your Touchstone Energy® Partner 

MONCKS CORNER: 761-8200, 572-5454, 825-3883 JOHNS ISLAND: 559-2458
GOOSE CREEK: 553-5020 AWENDAW: 884-7525

The Touchstone Energy® symbol is your assurance that we're a community-minded electric cooperative providing high standards of service for customers large and small.



Outdoor
Lighting

*Decorative security lighting
provides beauty, protection
and hospitality*

Berkeley Electric Cooperative, Inc.

Your Touchstone Energy® Partner 

Now you can protect your home or business while making it look more attractive.

Lighting The Way

At Berkeley Electric Cooperative, we're lighting your way to affordable, durable and attractive outdoor lighting.

Our Outdoor Lighting program provides:

- Affordable monthly payments that include installation, maintenance & operating costs.
- A secure, comfortable home or business environment.
- An advanced system that turns itself on and off automatically.
- Architectural styles that will compliment any area.
- A selection of several long-life fiberglass pole heights to support any fixture you choose.

Ask the Energy Experts®

Contact Berkeley Electric Cooperative and a representative will also help you select the right style, lamp type, wattage and pole height to meet your individual needs while providing maximum protection.

FIXTURE STYLES

WATTAGE/TYPE LUMEN OUTPUT



Colonial:

A colonial-style fixture is recommended for walkways, businesses, and parking areas. The fixture is mounted on a black fiberglass pole with underground service.

100 Watt/HPS/9,500
150 Watt/HPS/15,000

100 Watt/MH/9,000
150 Watt/MH/13,000



Standard Security Light:

A widely recognized fixture which is well-suited for use in any area. It can be mounted on new or existing Berkeley Electric Cooperative wooden poles with overhead service. Underground service is provided for an additional rate charge.

100 Watt/HPS/9,500
150 Watt/HPS/15,000

150 Watt/MH/13,000



Shoebox:

A contemporary style fixture recommended for streets, businesses and parking areas. This bronze fixture is typically mounted on a matching fiberglass pole with underground service.

250 Watt/HPS/27,500

Alternate fixture



Cobrahead:

Ideal for use in parking lots, streets and highways. Can be mounted on most existing Berkeley Electric Cooperative wooden poles with overhead service. Underground service is provided for an additional rate charge.

250 Watt/HPS/27,500
400 Watt/HPS/50,000

400 Watt/MH/36,000



Acorn:

This traditional acorn shaped luminaire, while reminiscent of the 1920's contains a precision optical system with the ideal use for subdivision lighting and office complexes.

175 Watt/MH/16,000

Preferred fixture

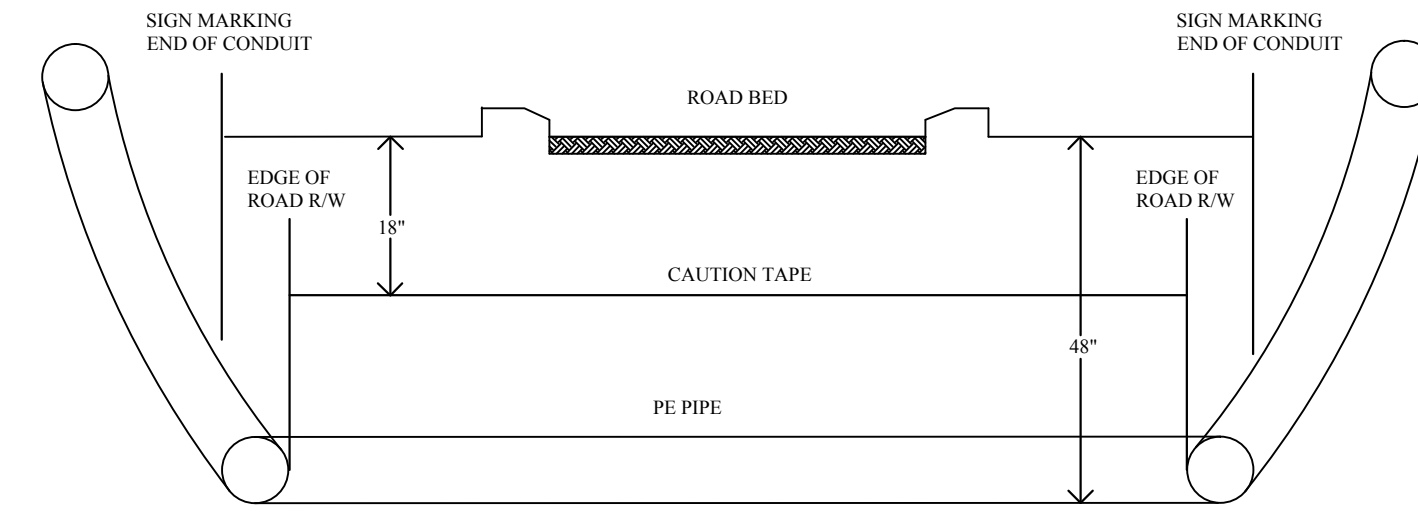


PHOTO OF PROPOSED SITE LIGHTING

EXHIBIT C

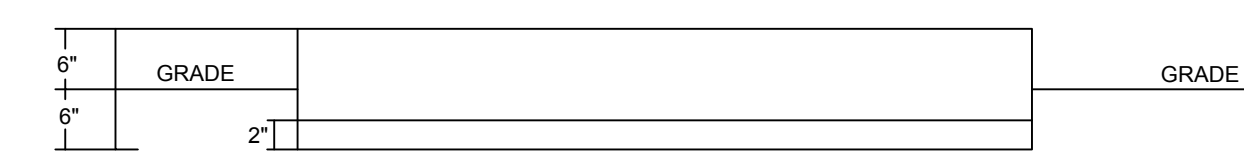
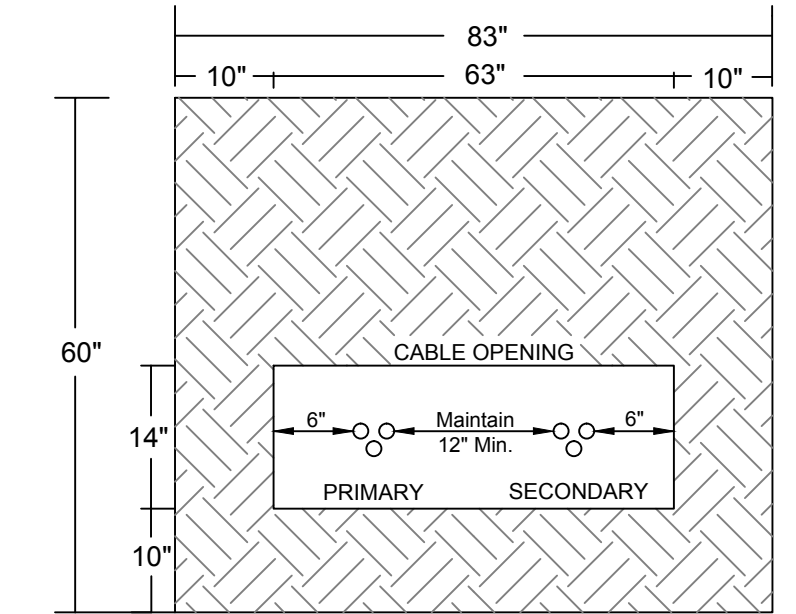
CONDUIT CROSSINGS
BERKELEY ELECTRIC COOPERATIVE, INC.

MONCK'S CORNERS 761-8200
JOHNS ISLAND 559-2458
GOOSE CREEK 553-5020
AWENDAW 884-7525



- NOTES:**
1. ENDS MUST BE SEALED TO PREVENT DIRT OR WATER FROM ENTERING
 2. BERKELEY ELECTRIC COOPERATIVE WILL PROVIDE CONDUIT OR PVC CAUTION TAPE, & PVC GLUE
 3. CONDUIT MUST BE INSTALLED AS SHOWN ON PLAT

BEC TRANSFORMER PAD SPECIFICATION
PAD SIZE FOR 45-500 KVA - 208V OR 480V SECONDARY VOLTAGE



1. GUARD POST TO BE INSTALLED BY CONTRACTOR; 8 FOOT STEEL POST, 4" DIAMETER, 4" IN GROUND, 4" OUT OF GROUND. POST TO BE FILLED IN WITH CONCRETE.
2. CONCRETE SHALL BE A 1:2:4 MIXTURE WITH A MINIMUM DESIGN STRENGTH OF 3000 P.S.I. STEEL REINFORCING SHALL BE 6"X 6" NO. 10 WIRE MESH TO STOP 1" FROM SIDES AND CABLE OPENING.
3. CONDUITS SHALL BE NO LESS THAN 6" FROM CENTER OF CABLE OPENING.
4. LOCATION OF PAD TO BE THE OPTION OF BERKELEY COOPERATIVE, INC.

B.E.C. DESIGN PLAN

- THE DEVELOPER SHALL:**
1. REVIEW THE LAYOUT, SIGN AND RETURN TO B.E.C. WITHIN THIRTY (30) DAYS WITH COMMENTS IF CHANGES ARE NEEDED.
 2. EASEMENT WILL BE GRANTED TO B.E.C.
 3. CLEAR & GRADE ENTIRE WIDTH OF PROPOSED EASEMENT WITHIN 6" OF FINAL GRADE.
 4. INSTALL ALL REQUESTED CONDUIT CROSSING PER B.E.C. SPECIFICATIONS.
 5. INSTALL ALL TEMPORARY PROPERTY CORNERS AND OR BUILDING CORNERS IN THE CURRENT CONSTRUCTION PHASE OF THE DEVELOPMENT.

- COLOR REFERENCE CHART:**
- GREEN - PROPOSED BURIAL / EASEMENT ROUTE
 - YELLOW - PRIMARY CONDUIT TO BE INSTALLED BY DEV. @ 42" DEPTH R/W TO R/W
 - ORANGE - SECONDARY / SERVICE CONDUIT TO BE INSTALLED BY DEV. @ 24" DEPTH R/W TO R/W
 - BLUE - LIGHTS
 - PINK -
 - RED - EXISTING BEC POWER

- NOTES:**
1. ALL B.E.C. EASEMENTS ARE TO BE CLEARED AND GRADED WITHIN +/- SIX (6) INCHES OF FINAL GRADE AND A MINIMUM OF 10" IN WIDTH.
 2. NO STRUCTURES, SETBACKS, ETC. WILL BE ALLOWED TO ENCROACH ONTO B.E.C. EASEMENTS.
 3. ALL CONSTRUCTIONS WILL BE IN ACCORDANCE WITH B.E.C. SERVICE RULES AND REGULATIONS IN EFFECT AT THE TIME OF SERVICE RENDERED.
 4. ALL FACILITY LOCATIONS ARE APPROXIMATE. FINAL LOCATIONS WILL BE STAKED OUT IN THE FIELD BY B.E.C. AT WHICH TIME NOTIFICATION TO PROCEED IS GIVEN TO B.E.C. BY THE DEVELOPER INDICATING THAT ALL PROPOSED ROUTES ARE CLEARED AND GRADED WITHIN +/- 6" OF FINAL GRADE AND ALL TEMPORARY CORNERS ARE INSTALLED.
 5. B.E.C. RESERVES THE RIGHT TO MAKE ANY CHANGES DEEMED NECESSARY TO THE PLACEMENT AND ROUTING OF PROPOSED B.E.C. FACILITIES TO INSURE THE MOST RELIABLE DISTRIBUTION FACILITIES AND THE FUTURE MAINTENANCE OF THE B.E.C. FACILITIES.
 6. THE DEVELOPER MAY BE RESPONSIBLE FOR INSTALLING ADDITIONAL DISTRIBUTION AND OR SERVICE CONDUITS IF A ROUTE IS DEEMED TO BE IMPASSABLE TO B.E.C. EQUIPMENT AND OR MAY CAUSE DAMAGE TO SURROUNDING AREAS OF STRUCTURES.

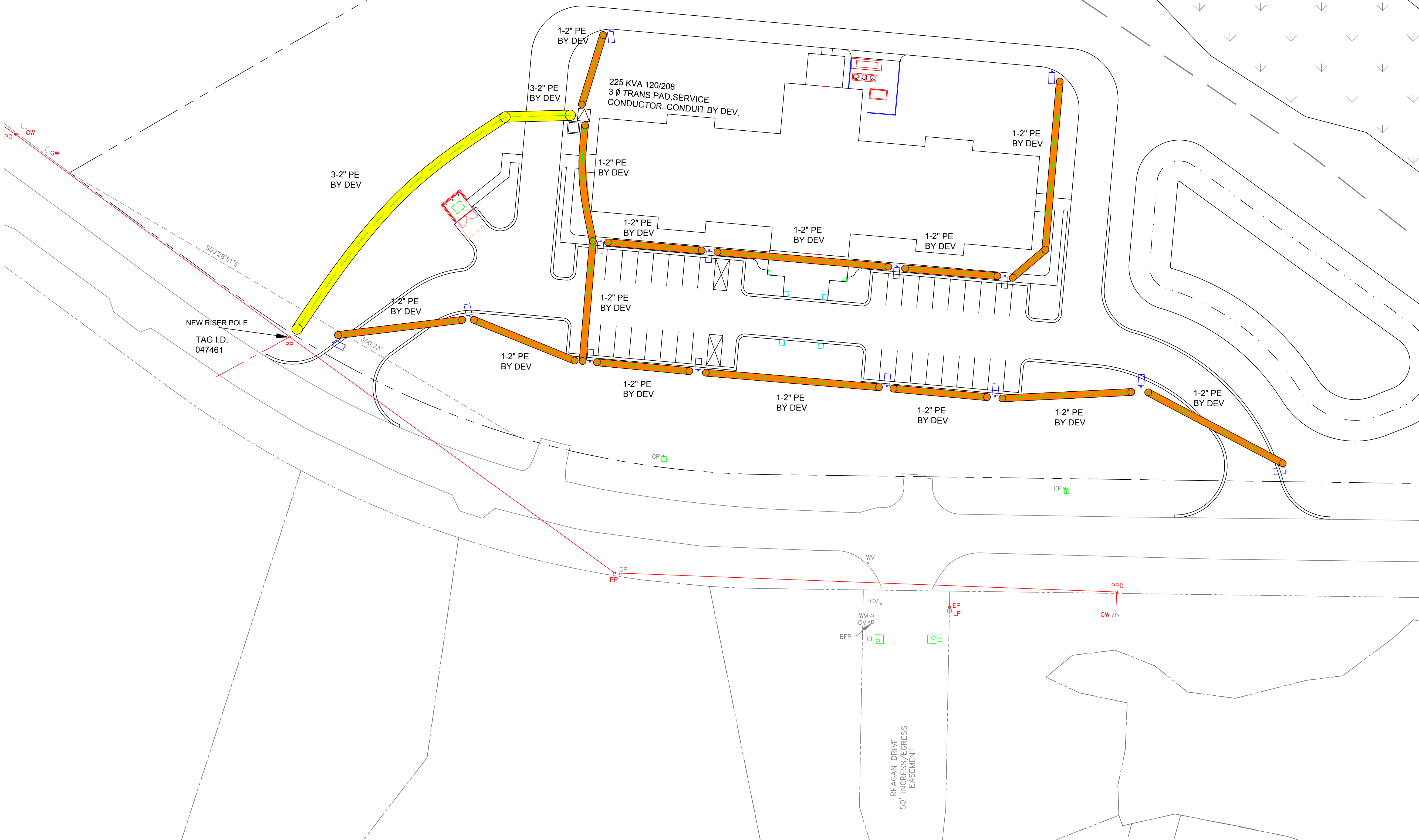
3 DAYS BEFORE DIGGING IN SOUTH CAROLINA CALL 1-888-721-7877
PALMETTO UTILITY PROTECTION SERVICE

DEVELOPER SIGNATURE

DEVELOPER HEREBY APPROVES THIS FINAL PLAT FOR CONSTRUCTION PURPOSES. ANY AND ALL CHANGES AFFECTING THIS LAYOUT MUST BE REPORTED IMMEDIATELY TO B.E.C. AND ALL COST INCURRED IN CONNECTION WITH ANY REQUESTED CHANGE WILL BE BORNE BY THE DEVELOPER.
I HEREBY CERTIFY THAT I HAVE THE AUTHORITY TO APPROVE THIS LAYOUT.

APPROVED BY: _____ PRINT NAME: _____

TITLE: _____ DATE: _____



KEY

□	Junction	○	Proposed Light
⊠	Transformer	●	Ex. Light
○	Switchgear	○	Proposed Pole
□	Splice Box	●	Ex. Pole
□	Primary Vault		
□	Secondary Vault		
□	Pedestal		

REV. NO.	DATE	DESCRIPTION OF REVISION
1		
2		
3		
4		

DRAWN BY: LOUIS DENARO DATE: 9-29-2017

BEC MAP: 28392 T.M.S. # _____
FILE LOCATION: _____ LOCATION: _____
COUNTY: BERKELEY GRANTOR: _____
SUBSTATION: MT. HOLLY CIRCUIT: 5

Berkeley Electric Cooperative, Inc.
Your Touchstone Energy® Cooperative
www.bec.coop Post Office Box 1234, Moncks Corner, SC 29461

AGAPE LOWCOUNTRY
(14)- 91W LED SHOEBOX LIGHTS
SCALE: 1"=30' GOOSE CREEK PAGE #:1 OF 1

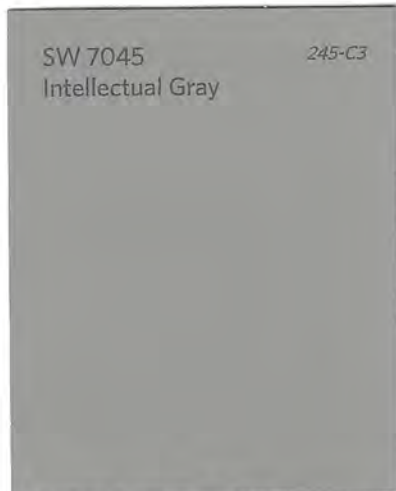


MONTEREY TAUPE

LAPPED SIDING



SHINGLES



SW 7045 245-C3
Intellectual Gray

LAPPED SIDING PAINT



SW 7006 257-C1
Extra White

TRIM PAINT



SW 6149 207-C2
Relaxed Khaki

VINYL FENCING

AGAPE HOUSE OF THE LOWCOUNTRY
EXTERIOR COLOR SAMPLES





BRICK

AGAPE HOUSE OF THE LOWCOUNTRY
EXTERIOR COLOR SAMPLES

