



LOWES PARKING LOT

HWY 176



PLANT LIST

Qty	Botanical Name	Common Name	Scheduled Size	Remarks
Trees				
9	Ilex x 'Nellie R. Stevens'	Nellie Stevens Holly	25" Cal 8'-9" Hgt.	Full to Ground
10	Quercus nuttallii	Nuttall Oak	25" Cal	B & B: single straight leader
5	Ulmus parviflora 'Bosque'	Bosque Elm	25" Cal	B & B
Shrubs				
31	Calamagrostis x acutiflora 'Karl Foerster'	Karl Foerster Feather Reed Grass	3 Gal.	
22	Hydrangea paniculata 'LimeLight'	LimeLight Hydrangea	3 Gal.	
84	Ilex cornuta 'Needpoint'	Needpoint Holly	24" Hgt.	
67	Ilex vomitoria 'Nana'	Dwarf Yaupon Holly	24" Hgt.	
13	Ligustrum sinense 'Sunshine'	Sunshine Ligustrum	3 Gal.	
68	Loropetalum chinense 'Shang White'	Emerald Snow Loropetalum	24" Hgt.	
23	Milcanthus sinensis 'Adagio'	Adagio Grass	3 Gal.	
17	Rhododopsis indica	Indian Hawthorn	3 Gal.	
41	Rhododendron 'Robleza'	Autumn Bonfire	3 Gal.	
5	Rosa 'Mejococo'	Pink Drift Rose	3 Gal.	
Groundcovers				
9	Coccoloba sempervirens	Carolina Jessamine	2 Gal.	
238	Liriope muscari 'Big Blue'	Big Blue Liriope	1 Gal.	Plant 18" O.C.
Other				

LANDSCAPE REQUIREMENTS

- REQUIRED**
- 12% total area to be landscaped (total area - bldg's)
 - 12 trees per acre
3.55 acres x 12 = 19 Trees
 - 6' wide landscape strip along street frontage.
 - 3 Canopy trees per 100 LF Hwy 176: 300 LF / 100 x 3 = 12 Trees
 - 1 tree and 2 shrubs per 10 parking spaces, 59 spaces / 10 = 6 Trees
12 Shrubs
- PROVIDED**
- 10 Oak trees, 5 Elm, 9 Holly = 24 Trees
 - 6' Wide landscape strip along Hwy 176 = 14 Trees
 - 5 Elm, 9 Holly = 9 Oak
 - 12 Hawthorn, 18 Azalea = 30 Shrubs



Chick-fil-A
 Chick-fil-A
 5200 Buffington Road
 Atlanta, Georgia 30349-2998



manley
 LAND DESIGN
 Landscape Architecture
 770.442.8171 tel
 770.442.1123 fax
 Manley Land Design, Inc.
 516 Canton Street
 Alpharetta, Georgia 30009
 manleylanddesign.com



CHICK-FIL-A
GOOSE CREEK
 516 ST. JAMES AVE.
 GOOSE CREEK, SC 29445

FSU# 2276

REVISION SCHEDULE

NO.	DATE	DESCRIPTION

M/D PROJECT # 2020082
 PRINTED FOR PRELIMINARY
 DATE 7/13/20
 DRAWN BY ADN

Information contained on this drawing and in all other files developed by either party shall remain the confidential and proprietary information of the party who developed the information.

PRELIMINARY
 LANDSCAPE
 RENDERING

SHEET NUMBER **R-100**

CUNNINGHAM BRICK
RED VELOUR, MODULAR



CUNNINGHAM BRICK
TAN VELOUR, MODULAR



DARK BRONZE
DURA COAT



ORDER POINT CANOPY ELEVATION



FRONT ELEVATION (SOUTHWEST) SCALE = 1/4"



SIDE ENTRY ELEVATION (NORTHWEST) SCALE = 1/4"



CHICK-FIL-A 2276
516 SAINT JAMES AVE
GOOSE CREEK, SC

THE COLORS SHOWN IN THIS RENDERING ARE CLOSE APPROXIMATIONS. DUE TO INK VARIATIONS AND DIFFERENCES IN PRINTERS, AN EXACT COLOR MATCH CANNOT BE ACHIEVED. THE VIEWER IS ADVISED TO USE THE RENDERING AS A GUIDELINE FOR THE ARRANGEMENT OF COLORS ON THE BUILDING, AND TO THEN REFER TO THE ACTUAL COLOR OR MATERIAL SAMPLES PROVIDED.

INTERPLAN LLC

ARCHITECTURE • ENGINEERING • PROJECT MANAGEMENT • INTERIOR DESIGN

INTERPLAN NO. 2020.0145

06-16-20



REAR ELEVATION (NORTHEAST) SCALE = 1/4"

- CUNNINGHAM BRICK
RED VELOUR, MODULAR 
- CUNNINGHAM BRICK
TAN VELOUR, MODULAR 
- DARK BRONZE
DURA COAT 



DRIVE THRU ELEVATION (SOUTHEAST) SCALE = 1/4"



CHICK-FIL-A 2276
 516 SAINT JAMES AVE
 GOOSE CREEK, SC

THE COLORS SHOWN IN THIS RENDERING ARE CLOSE APPROXIMATIONS. DUE TO INK VARIATIONS AND DIFFERENCES IN PRINTERS, AN EXACT COLOR MATCH CANNOT BE ACHIEVED. THE VIEWER IS ADVISED TO USE THE RENDERING AS A GUIDELINE FOR THE ARRANGEMENT OF COLORS ON THE BUILDING, AND TO THEN REFER TO THE ACTUAL COLOR OR MATERIAL SAMPLES PROVIDED.

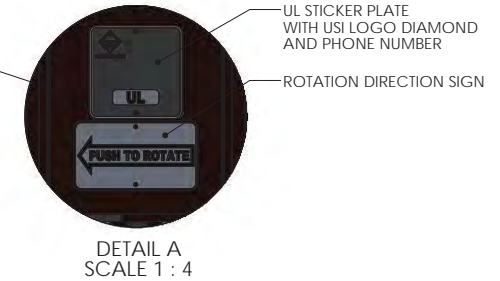
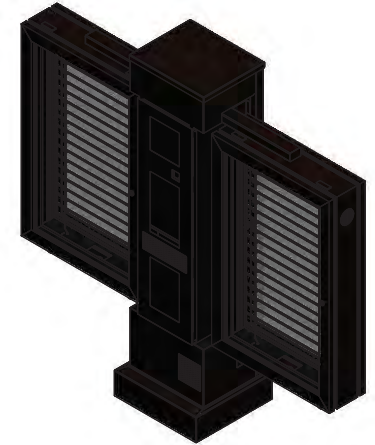
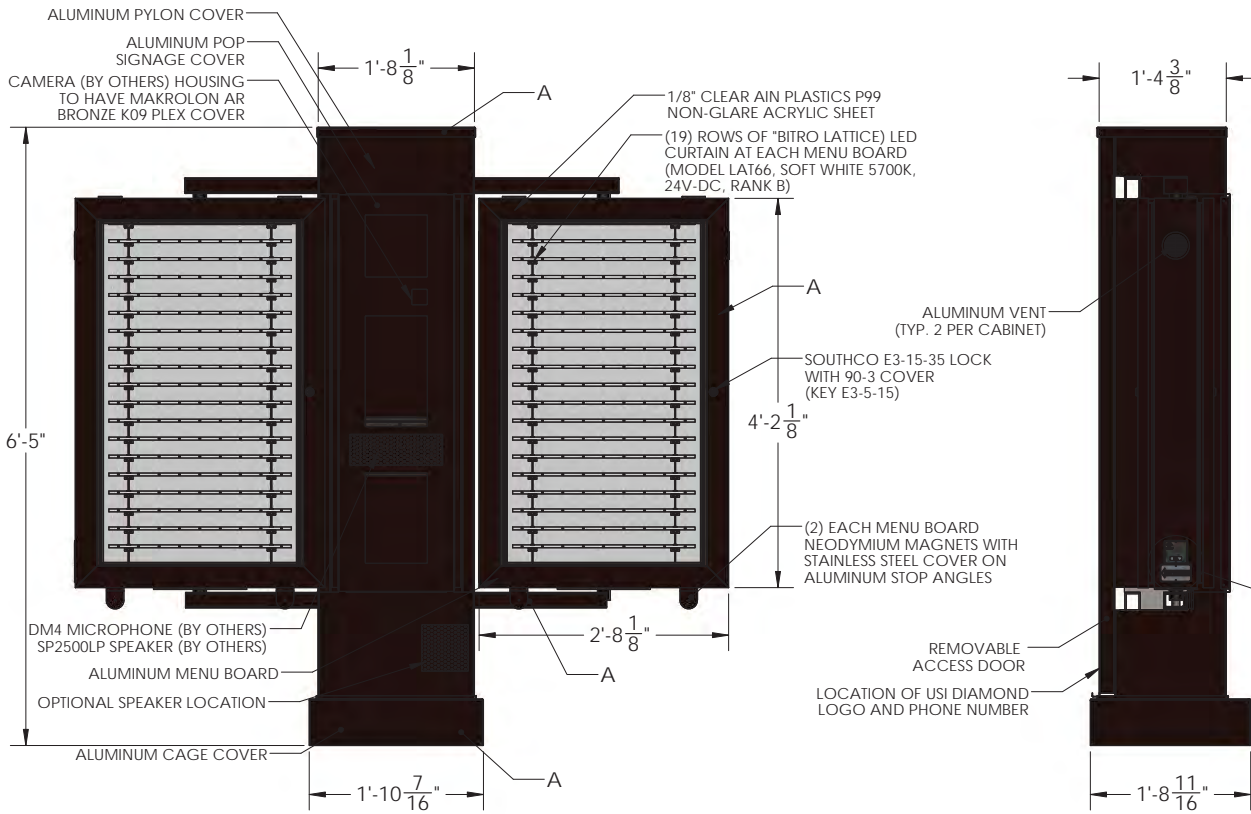
INTERPLAN LLC
 ARCHITECTURE • ENGINEERING • PROJECT MANAGEMENT • INTERIOR DESIGN
 INTERPLAN NO. 2020.0145
 06-16-20

4

3

2

1



B

B

A

A

4

3

2

1

	COLOR NOTES
A	POWDER COAT DARK BRONZE
B	

PROPRIETARY AND CONFIDENTIAL

NOTE: THIS IS AN ORIGINAL, COPYRIGHTED DRAWING BY UNI-STRUCTURES, INC. (USI) AND SUBMITTED FOR YOUR PERSONAL USE IN CONNECTION WITH A PROJECT BEING PLANNED FOR YOU BY UNI-STRUCTURES, INC. AND IS NOT TO BE SHOWN TO ANYONE OUTSIDE YOUR ORGANIZATION, NOR IS IT TO BE USED, COPIED, REPRODUCED, OR EXHIBITED IN ANY FORM WITHOUT THE EXPRESS WRITTEN CONSENT OF USI, PURSUANT TO USI TERMS AND CONDITIONS. COPYRIGHT 2008-20015, UNI-STRUCTURES, INC. ALL RIGHTS RESERVED WORLDWIDE.

		UNLESS OTHERWISE SPECIFIED:		NAME	DATE	TITLE: CFA ORDER POINT	
		DIMENSIONS ARE IN INCHES TOLERANCES: FRACTIONAL ± ANGULAR: MACH ± BEND ± TWO PLACE DECIMAL ± THREE PLACE DECIMAL ±	DRAWN				SIZE B
		INTERPRET GEOMETRIC TOLERANCING PER:	CHECKED				DWG. NO. 200495-01
		MATERIAL	ENG APPR.				REV
	NEXT ASSY	USED ON	MFG APPR.			SCALE: 1:24	
	APPLICATION	DO NOT SCALE DRAWING	Q.A.			WEIGHT:	
			COMMENTS:			SHEET 2 OF 10	





FACE-TO-FACE CANOPY - VIEW FROM GLEN McCONNELL PKWAY



OUTSIDE MEAL DELIVERY CANOPY - VIEW FROM INSIDE SHOPPING CENTER



FACE-TO-FACE CANOPY - VIEW FROM GLEN McCONNELL PKWAY



OUTSIDE MEAL DELIVERY CANOPY - VIEW FROM INSIDE SHOPPING CENTER



OUTSIDE MEAL DELIVERY CANOPY AT DORCHESTER ROAD CHICK-FIL-A SITE





D-Series Size 0 LED Area Luminaire



Catalog Number	DSX0-LED-P7-40K-x-MVOLT-SPA-DDBXD
Notes	Chick-fil-A - Greenville, SC
Type	A, B

Hit the Tab key or mouse over the page to see all interactive elements.

A+ Capable Luminaire

This item is an A+ capable luminaire, which has been designed and tested to provide consistent color appearance and system-level interoperability.

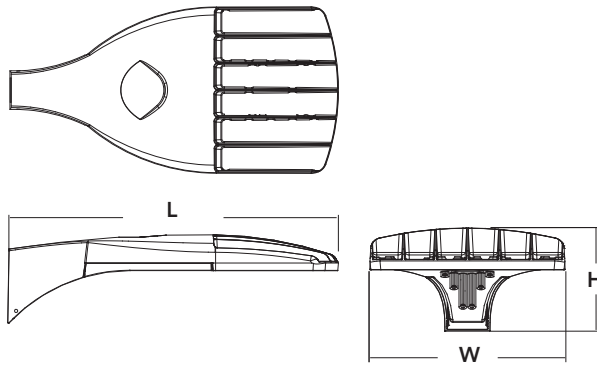
- All configurations of this luminaire meet the Acuity Brands' specification for chromatic consistency
- This luminaire is A+ Certified when ordered with DTL® controls marked by a **shaded background**. DTL DLL equipped luminaires meet the A+ specification for luminaire to photocontrol interoperability¹
- This luminaire is part of an A+ Certified solution for ROAM® or XPoint™ Wireless control networks, providing out-of-the-box control compatibility with simple commissioning, when ordered with drivers and control options marked by a **shaded background**¹

To learn more about A+, visit www.acuitybrands.com/aplus.

- See ordering tree for details.
- A+ Certified Solutions for ROAM require the order of one ROAM node per luminaire. Sold Separately: [Link to Roam](#); [Link to DTL DLL](#)

Specifications

- EPA:** 0.95 ft² (.09 m²)
- Length:** 26" (66.0 cm)
- Width:** 13" (33.0 cm)
- Height:** 7" (17.8 cm)
- Weight (max):** 16 lbs (7.25 kg)



A+ Capable options indicated by this color background.

Ordering Information

EXAMPLE: DSX0 LED P6 40K T3M MVOLT SPA DDBXD

DSX0 LED	P7	40K	T4M, T5W	MVOLT	SPA
Series	LEDs	Color temperature	Distribution	Voltage	Mounting
DSX0 LED	Forward optics P1 P4 P7 P2 P5 P3 P6 Rotated optics P10 ¹ P12 ¹ P11 ¹ P13 ¹	30K 3000 K 40K 4000 K 50K 5000 K AMBPC Amber phosphor converted ²	T1S Type I short T2S Type II short T2M Type II medium T3S Type III short T3M Type III medium T4M Type IV medium TFTM Forward throw medium T5VS Type V very short T5S Type V short T5M Type V medium T5W Type V wide BLC Backlight control ^{2,3} LCCO Left corner cutoff ³ RCCO Right corner cutoff ³	MVOLT^{4,5} 120 ⁶ 208 ^{5,6} 240 ^{5,6} 277 ⁶ 347 ^{5,6,7} 480 ^{5,6,7}	Shipped included SPA Square pole mounting RPA Round pole mounting WBA Wall bracket SPUMBA Square pole universal mounting adaptor ⁸ RPUMBA Round pole universal mounting adaptor ⁸ Shipped separately KMA8 DDBXD U Mast arm mounting bracket adaptor (specify finish) ⁹

Control options	Other options	Finish (required)
<p>Shipped installed</p> <p>NLTAIR2 nLight AIR generation 2 enabled¹⁰</p> <p>PER NEMA twist-lock receptacle only (control ordered separate)¹¹</p> <p>PER5 Five-wire receptacle only (control ordered separate)^{11,12}</p> <p>PER7 Seven-wire receptacle only (control ordered separate)^{11,12}</p> <p>DMG 0-10V dimming extend out back of housing for external control (control ordered separate)</p> <p>PIR Bi-level, motion/ambient sensor, 8-15' mounting height, ambient sensor enabled at 5fc^{5,13,14}</p> <p>PIRH Bi-level, motion/ambient sensor, 15-30' mounting height, ambient sensor enabled at 5fc^{5,13,14}</p> <p>PIRHN Network, Bi-Level motion/ambient sensor¹⁵</p> <p>PIR1FC3V Bi-level, motion/ambient sensor, 8-15' mounting height, ambient sensor enabled at 1fc^{5,13,14}</p> <p>PIRH1FC3V Bi-level, motion/ambient sensor, 15-30' mounting height, ambient sensor enabled at 1fc^{5,13,14}</p> <p>BL30 Bi-level switched dimming, 30%^{5,16,17}</p> <p>BL50 Bi-level switched dimming, 50%^{5,16,17}</p> <p>PNMTDD3 Part night, dim till dawn^{5,18}</p> <p>PNMT5D3 Part night, dim 5 hrs^{5,18}</p> <p>PNMT6D3 Part night, dim 6 hrs^{5,18}</p> <p>PNMT7D3 Part night, dim 7 hrs^{5,18}</p> <p>FAO Field adjustable output¹⁹</p>	<p>Shipped installed</p> <p>HS House-side shield²⁰</p> <p>SF Single fuse (120, 277, 347V)⁶</p> <p>DF Double fuse (208, 240, 480V)⁶</p> <p>L90 Left rotated optics¹</p> <p>R90 Right rotated optics¹</p> <p>DDL Diffused drop lens²⁰</p> <p>Shipped separately</p> <p>BS Bird spikes²¹</p> <p>EGS External glare shield²¹</p>	<p>DDBXD Dark bronze</p> <p>DBLXD Black</p> <p>DNAXD Natural aluminum</p> <p>DWHXD White</p> <p>DDBTXD Textured dark bronze</p> <p>DBLBXD Textured black</p> <p>DNATXD Textured natural aluminum</p> <p>DWHGXD Textured white</p>



Catalog Number		SSS-25-4C-DMxx-DDB
Notes	Chick-fil-A - Tupelo, MS (Thompson Square)	Type A, B, C

FEATURES & SPECIFICATIONS

CONSTRUCTION — Weldable-grade, hot-rolled, commercial-quality carbon steel tubing with a minimum yield of 55,000 psi (11-gauge), 50,000 psi (7-gauge). Uniform wall thickness of .125" or .188". Shafts are one-piece with a full-length longitudinal, high-frequency electric resistance weld. Uniformly square in cross-section with flat sides, small corner radii and excellent torsional qualities. Available shaft widths are 4", 5" and 6".

Anchor base is fabricated from hot-rolled carbon steel plate conforming to ASTM A36, that meets or exceeds a minimum yield strength of 36,000 psi. The anchor base is provided with slotted holes. Base cover is finished to match pole. A handhole having nominal dimensions of 3" x 5" for all shafts. Included is a cover with attachment screws.

Top cap provided with all drill-mount poles.

Fasteners are high-strength galvanized, zinc-plated or stainless steel.

FINISH — Dark bronze (DDB) polyester powder standard. Other architectural colors available. See www.lithonia.com/archcolors.

GROUNDING — Provision located immediately inside handhole rim. Grounding hardware is not included (provided by others).

ANCHOR BOLTS — Top portion of anchor bolt is galvanized per ASTM A-153. Made of steel rod having a minimum yield strength of 55,000 psi.



Anchor Base Poles

SSS

SQUARE STRAIGHT STEEL

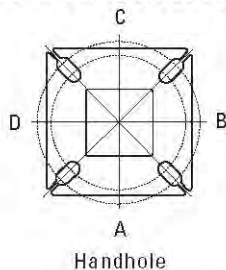
ORDERING INFORMATION

Lead times will vary depending on options selected. Consult with your sales representative.

Example: SSS 20 5C DM19 DDB

SSS	25	4C	DM19, DM28		DDB
Shaft type	Nominal fixture mounting height	Nominal shaft base size/wall thickness	Mounting ¹	Options	Finish ⁷
SSS	10 – 33 feet <i>(see back page.)</i>	<i>(See back page.)</i>	<p>Tenon mounting</p> <p>PT Open top</p> <p>T20 2-3/8" O.D. (2" NPS)</p> <p>T25 2-7/8" O.D. (2-1/2" NPS)</p> <p>T30 3-1/2" O.D. (3" NPS)</p> <p>T35 4" O.D. (3-1/2" NPS)</p> <p>Drill mounting²</p> <p>DM19 1 at 90°</p> <p>DM28 2 at 180°</p> <p>DM28PL 2 at 180° with one side plugged</p> <p>DM29 2 at 90°</p> <p>DM39 3 at 90°</p> <p>DM49 4 at 90°</p> <p>AERIS/OMERO Drill mounting²</p> <p>DM19AS 1 at 90°</p> <p>DM28AS 2 at 180°</p> <p>DM29AS 2 at 90°</p> <p>DM39AS 3 at 90°</p> <p>DM49AS 4 at 90°</p> <p>AERIS Suspend Drill mounting^{2,3}</p> <p>DM19AST_ 1 at 90°</p> <p>DM28AST_ 2 at 180°</p> <p>DM29AST_ 2 at 90°</p> <p>DM39AST_ 3 at 90°</p> <p>DM49AST_ 4 at 90°</p> <p>OMERO Suspend Drill mounting^{2,3}</p> <p>DM19MRT_ 1 at 90°</p> <p>DM28MRT_ 2 at 180°</p> <p>DM29MRT_ 2 at 90°</p> <p>DM39MRT_ 3 at 90°</p> <p>DM49MRT_ 4 at 90°</p>	<p>Shipped installed</p> <p>L/AB Less anchor bolts</p> <p>VD Vibration damper</p> <p>TP Tamper proof</p> <p>Hxx Horizontal arm bracket (1 fixture)^{4,5}</p> <p>FDLxx Festoon outlet less electrical⁴</p> <p>FGLxx Festoon GFI outlet less electrical⁴</p> <p>CPL12xx 1/2" coupling⁴</p> <p>CPL34xx 3/4" coupling⁴</p> <p>CPL1xx 1" coupling⁴</p> <p>NPL12xx 1/2" threaded nipple⁴</p> <p>NPL34xx 3/4" threaded nipple⁴</p> <p>NPL1xx 1" threaded nipple⁴</p> <p>HHxx Extra handhole^{4,6}</p>	<p>Standard colors</p> <p>DDB: Dark bronze</p> <p>DWH White</p> <p>DBL Black</p> <p>DMB Medium bronze</p> <p>DNA Natural aluminum</p> <p>GALV Galvanized finish</p> <p>Classic colors</p> <p>DSS Sandstone</p> <p>DGC Charcoal gray</p> <p>DTG Tennis green</p> <p>DBR Bright red</p> <p>DSB Steel blue</p> <p>Architectural colors (powder finish)⁷</p>

HANDHOLE ORIENTATION



NOTES:

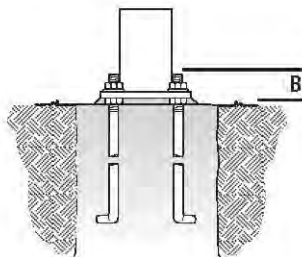
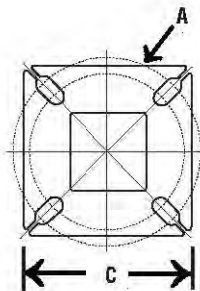
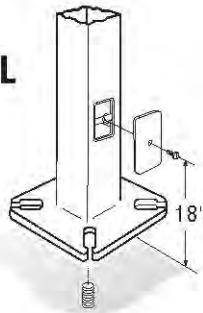
- When ordering tenon mounting and drill mounting for the same pole, follow this example: DM28/T20. The combination includes a required extra handhole.
- The drilling template to be used for a particular luminaire depends on the luminaire that is used. Refer to the Technical Data Section of the Outdoor Binder for Drilling Templates.
- Insert "1" or "2" to designate fixture size; e.g. DM19AST2.
- Specify location and orientation when ordering option.
For 1st "x": Specify the height in feet above base of pole.
Example: 5ft = 5 and 20ft = 20
For 2nd "x": Specify orientation from handhole (A,B,C,D)
Refer to the Handhole Orientation diagram on this page.
- Horizontal arm is 18" x 2-3/8" O.D. tenon standard.
- Combination of tenon-top and drill mount requires extra handhole.
- Additional colors available; see www.lithonia.com/archcolors or Architectural Colors brochure (Form No. 794.3). Powder finish standard.

SSS Square Straight Steel Poles

TECHNICAL INFORMATION

Catalog Number	Nominal shaft length (feet)	Pole Shaft Size (in x ft)	Wall Thickness (inches)	Gauge	EPA (ft ²) with 1.3 gust						Bolt Circle (inches)	Bolt Size (in. x in. x in.)	Approximate ship weight (pounds)
					80 mph	Max. weight	90 mph	Max. weight	100 mph	Max. weight			
SSS 10 4C	10	4.0 x 10.0	0.125	11	30.6	765	23.8	595	18.9	473	8--9	3/4 x 18 x 3	75
SSS 12 4C	12	4.0 x 12.0	0.125	11	24.4	610	18.8	470	14.8	370	8--9	3/4 x 18 x 3	90
SSS 14 4C	14	4.0 x 14.0	0.125	11	19.9	498	15.1	378	11.7	293	8--9	3/4 x 18 x 3	100
SSS 16 4C	16	4.0 x 16.0	0.125	11	15.9	398	11.8	295	8.9	223	8--9	3/4 x 18 x 3	115
SSS 18 4C	18	4.0 x 18.0	0.125	11	12.6	315	9.2	230	6.7	168	8--9	3/4 x 18 x 3	125
SSS 20 4C	20	4.0 x 20.0	0.125	11	9.6	240	6.7	167	4.5	150	8--9	3/4 x 18 x 3	140
SSS 20 4G	20	4.0 x 20.0	0.188	7	16.5	415	12.25	310	9.3	240	8--9	3/4 x 30 x 3	198
SSS 20 5C	20	5.0 x 20.0	0.125	11	17.7	443	12.7	343	9.4	235	10--12	1 x 36 x 4	185
SSS 20 5G	20	5.0 x 20.0	0.188	7	28.1	703	21.4	535	16.2	405	10--12	1 x 36 x 4	265
SSS 25 4C	25	4.0 x 25.0	0.125	11	4.8	150	2.6	100	1.0	50	8--9	3/4 x 18 x 3	170
SSS 25 4G	25	4.0 x 25.0	0.188	7	10.8	270	7.7	188	5.4	135	8--9	3/4 x 30 x 3	245
SSS 25 5C	25	5.0 x 25.0	0.125	11	9.8	245	6.3	157	3.7	150	10--12	1 x 36 x 4	225
SSS 25 5G	25	5.0 x 25.0	0.188	7	18.5	463	13.3	333	9.5	238	10--12	1 x 36 x 4	360
SSS 30 4G	30	4.0 x 30.0	0.188	7	6.4	160	4.0	100	2.3	58	8--9	3/4 x 30 x 3	295
SSS 30 5C	30	5.0 x 30.0	0.125	11	4.7	150	2.0	50	--	--	10--12	1 x 36 x 4	265
SSS 30 5G	30	5.0 x 30.0	0.188	7	10.7	267	6.7	167	3.9	100	10--12	1 x 36 x 4	380
SSS 30 6G	30	6.0 x 30.0	0.188	7	19.0	475	13.2	330	9.0	225	11--13	1 x 36 x 4	520
SSS 35 5G	35	5.0 x 35.0	0.188	7	5.9	150	2.5	100	--	--	10--12	1 x 36 x 4	440
SSS 35 6G	35	6.0 x 35.0	0.188	7	12.4	310	7.6	190	4.2	105	11--13	1 x 36 x 4	540
SSS 39 6G	39	6.0 x 39.0	0.188	7	7.2	180	3.0	75	--	--	11--13	1 x 36 x 4	605

BASE DETAIL



Shaft base size	Bolt circle A	Bolt projection B	Base square	Pole Data		
				Template description	Anchor bolt description	Anchor bolt and template number
4'C	8-1/2"	2-3/4"-4"	8"	ABTEMPLATE PJ50004	AB 18-0	ABSSS-4C
4'G	8-1/2"	2-3/4"-4"	8"	ABTEMPLATE PJ50004	AB30-0	ABSSS-4G
5"	10"-12"	3-3/8"-4"	11"	ABTEMPLATE PJ50010	AB36-0	ABSSS-5
6"	11"-13"	3-3/8"-4"	12-1/2"	ABTEMPLATE PJ50011	AB36-0	N/A

IMPORTANT INSTALLATION NOTES:

- Do not erect poles without having fixtures installed.
- Factory-supplied templates must be used when setting anchor bolts. Lithonia Lighting will not accept claim for incorrect anchorage placement due to failure to use factory template.
- If poles are stored outside, all protective wrapping must be removed immediately upon delivery to prevent finish damage.
- Lithonia Lighting is not responsible for the foundation design.

IMPORTANT:

- These specifications are intended for general purposes only. Lithonia reserves the right to change material or design, without prior notice, in a continuing effort to upgrade its products.



SITE LOCATION MAP
NOT TO SCALE

**BEFORE YOU DIG
CALL 1-800-781-7877**

NOTICE: EXISTING UTILITY LOCATIONS

BEFORE LOCATION AND INSTALLATION OF ANY UNDERGROUND UTILITY, STORM DRAINAGE FACILITIES, CULVERTS & PIPES, AND OTHER RELATED CONSTRUCTION ACTIVITY, THE CONTRACTOR SHALL BE RESPONSIBLE TO OBTAIN NECESSARY INFORMATION. THE CONTRACTOR SHALL ALSO BE RESPONSIBLE TO OBTAIN NECESSARY INFORMATION. THE CONTRACTOR SHALL BE RESPONSIBLE TO OBTAIN NECESSARY INFORMATION. THE CONTRACTOR SHALL BE RESPONSIBLE TO OBTAIN NECESSARY INFORMATION.

FLOOD ZONE DATA

THIS PROPERTY IS LOCATED IN FLOOD ZONE "X" OF THE FLOOD INSURANCE RATE MAP NO. 48015-0305 FOR BROWLEY COUNTY, SOUTH CAROLINA, BEARING THE EFFECTIVE DATE OF OCTOBER 16, 2003. FLOOD ZONE "X" REPRESENTS AREAS DETERMINED TO BE OUTSIDE THE 0.25 ANNUAL CHANCE FLOODPLAIN. THE LIMITS OF SAID FLOOD ZONE ARE APPROXIMATE LOCATIONS ONLY AS TRANSPARENT BY GRAPHIC INTERPRETATION FROM THE FLOOD INSURANCE RATE MAP AND WERE NOT LOCATED BY FIELD SURVEY OR COORDINATE GEOMETRY.

EXISTING CONDITIONS AREA TABULATION

IMPERVIOUS AREA	BUILDINGS	4,540 SF
CONCRETE	11,905 SF	
ASPHALT PAVEMENT	20,881 SF	
SUBTOTAL	37,326 SF	(50.53%)
PERVIOUS AREA	LANDSCAPE/OPEN SPACE	29,702 SF (44.7%)
TOTAL AREA	66,785 SF (1.53 ACRES)	

NEW DEVELOPMENT AREA TABULATION

IMPERVIOUS AREA	BUILDINGS	4,995 SF
CONCRETE	19,297 SF	
ASPHALT PAVEMENT	18,625 SF	
SUBTOTAL	42,917 SF	(66.19%)
PERVIOUS AREA	LANDSCAPE/OPEN SPACE	23,521 SF (34.81%)
TOTAL AREA	66,785 SF (1.53 ACRES)	

NOTICE: PEDESTRIAN SAFETY

THE CONTRACTOR SHALL TAKE NECESSARY MEASURES TO SEPARATE EACH WORK AREA FROM PEDESTRIAN TRAFFIC AND TO INSURE SAFE PEDESTRIAN PASSAGE AT ALL TIMES. THE CONTRACTOR SHALL ALSO UTILIZE SAFETY WARNING SIGNS, BARRICADES, AND OTHER RELATED MEASURES, AS NECESSARY. THE CONTRACTOR SHALL COORDINATE PERIODICALLY WITH THE PROJECT MANAGER TO REVIEW SAFETY CONCERNS AND ADVISE OF ACTIVE WORK AREAS.

DEVELOPMENT INFORMATION:

NAME OF DEVELOPER: CHICK-FL-A RESTAURANT
OWNER/APPLICANT: CHICK-FL-A, INC.
3000 BURENDA ROAD
ALAMOGA, GA 30606-0285
PHONE NO. (706) 785-0000
P.O. BOX 1027
P.O.C. - DANN ROSS, DAN FEDER
dross@chick-fil-a.com
dfeder@chick-fil-a.com

ENGINEER: S. ROBERT GEORGE AND ASSOCIATES, INC.
114 NEW MARKET STREET
COLUMBIA, SC 29417
PHONE NO. 803-799-1811
P.O. BOX 1001
P.O.C. - MICHAEL S. WALLACE, P.E.
mwallace@srga.com
srga.com

PROPERTY ADDRESS: 516 ST. JAMES AVE. GOOSE CREEK, SC 29645

TAX MAP #: PARCEL# 04-03-05-039 DR. TRAIL, PL. 301

TOTAL PARCEL SIZE: 1.533 ACRES

ZONING INFORMATION: TS-1C (TRAIL CORRIDOR)

EXISTING ZONING: CHICK-FL-A RESTAURANT
PROPOSED ZONING: CHICK-FL-A RESTAURANT
EXISTING USE: TWO STRIPES ALLOWED
PROPOSED USE:

AMBIENT ZONING & LAND USE: FRONT - (N) A/A
REAR - (S) HWY 176
LEFT SIDE (W) CC
RIGHT SIDE (E) CC
REARAL LINES OF LINES

REQUIRED MINIMUM BUILDING SETBACKS:

FRONT YIELD	30'
REAR YIELD	10'
LEFT SIDE	10'
RIGHT SIDE	10'
MIN. BUILDING HEIGHT ALLOWED:	30 FT

BUILDING DIMENSIONS: SEE SITE LAYOUT PLAN

SQUARE FOOTAGE AREA: 4844 SF (EXIST) + 4962 SF (NEW/REEL)

NUMBER OF SEATS: 134

HEIGHT RESTRICTED: N/A (N/A) 13' 4" (MAX BUILDING)

ACTUAL BUILDING HEIGHT: 13' 4" (PROOF PLAN)

BUILDING OCCUPANCY: RESTAURANT

NUMBER OF STORES: 2

TYP. OF CONSTRUCTION: SINGLE/DOME (1) DOUBLE (1)

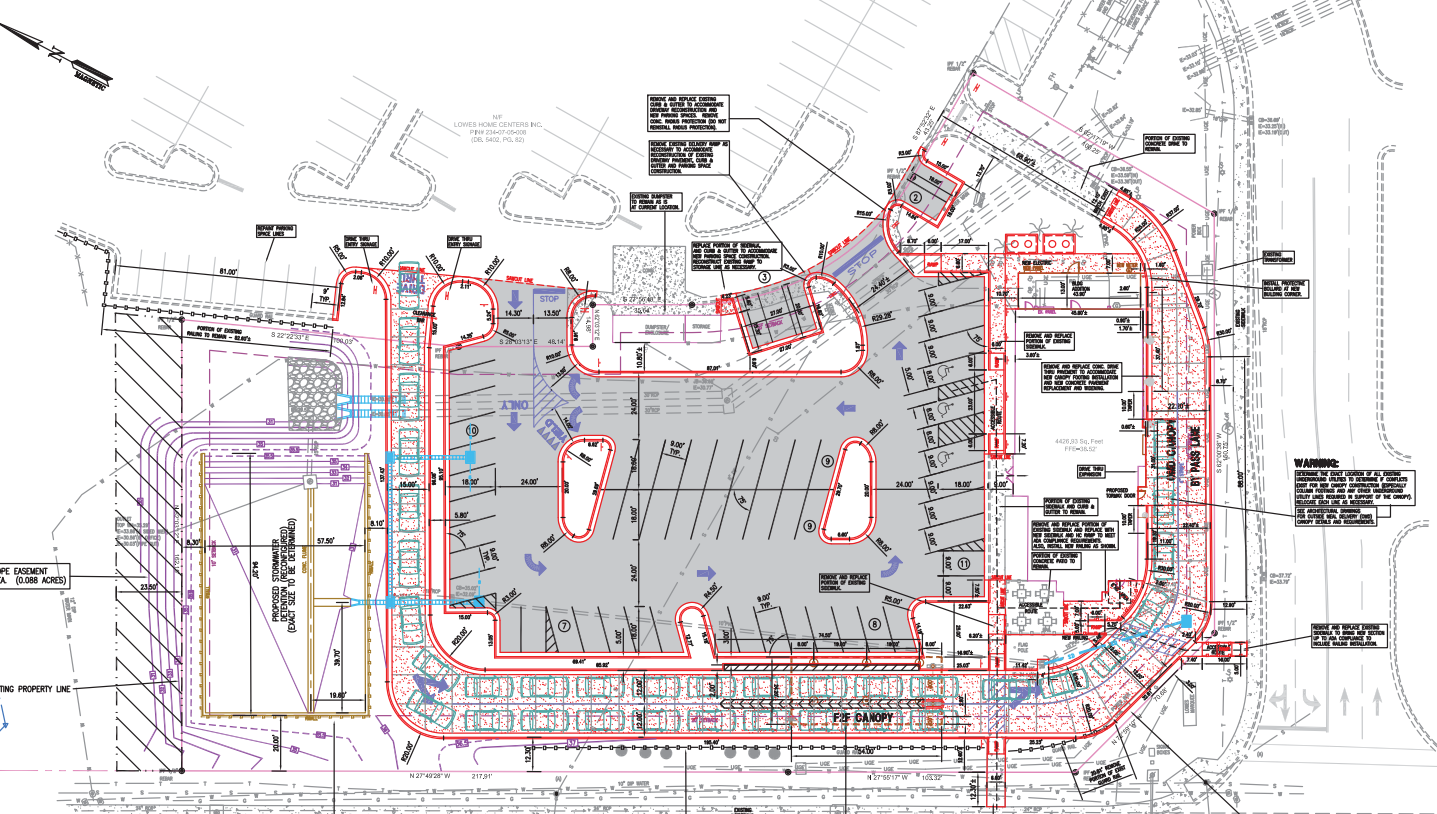
PARKING SUMMARY:

REGULAR SPACE	54
12 SPACES	12
REGULAR SPACE	7
12 SPACES	12
REGULAR SPACE	7
12 SPACES	12
REGULAR SPACE	7
12 SPACES	12

REQUIRED: 1 SPACE/4 SEATS PLUS SPACE PER EMPLOYEE

SITE PLAN DESIGN NOTES & KEY PLAN

- 1 DIRECTIONAL ARROW
- 2 DRIVE-THRU GRAPHICS
- 3 STOP LINE GRAPHIC
- 4 PAINTED HANDICAP PARKING SYMBOL
- 5 STANDARD PARKING SIGN & STRIPING DETAIL. NEUTRAL SIGN SHALL BE MOUNTED WITH THE SIGN STREETS AT 45° OR UNLESS NOTED OTHERWISE.
- 6 DIRECTIONAL SIGNAGE ALL SIGNS SHALL CONFORM TO THE MANUAL ON UNIFORM TRAFFIC CONTROL DEVICES BY THE U.S. DEPARTMENT OF TRANSPORTATION.
- 7 SIDEWALK HANDICAP RAMP
- 8 HANDICAP RAMP WITH FLARED SIDES (NOT USED)
- 9 RETAINED CURB/STAIR HANDICAP RAMP DETAIL
- 10 TRUNCATED CONES (SEE HANDICAP RAMP DETAILS)
- 11 TYPICAL CONCRETE SIDEWALK DETAIL
- 12 SIDEWALK WITH CURB & GUTTER SECTION
- 13 DRIVE THRU PLAN VIEW
- 14 DRIVE THRU ISOMETRIC VIEW
- 15 WHEEL STOP DETAIL (NOT USED)
- 16 TRUCK APPROX/TRAFFIC PROTECTION DETAIL (NOT USED)
- 17 24" CURB AND GUTTER - CORNER & SPALLING
- 18 ROLLERS-ROUNDER/CHISEL (NOT USED)
- 19 TRASH ENCLOSURE FOUNDATION PLAN (NOT USED)
- 20 DAMPER/STORAGE BUILDING (SEE ARCHITECT PLAN)
- 21 TRASH ENCLOSURE A.L.T. FOUNDATION PLAN (NOT USED)
- 22 DAMPER/STORAGE BUILDING (SEE ARCHITECT PLAN)
- 23 TRASH ENCLOSURE A.L.T. DRAINAGE PLAN (NOT USED)
- 24 DAMPER/STORAGE BUILDING (SEE ARCHITECT PLAN)
- 25 ROLLED DETAIL
- 26 TYPICAL PARALLEL SECTION
- 27 FREEDOM EDGE DETAIL
- 28 TRANSVERSE & LONGITUDINAL CONTRACTOR JOINT
- 29 TRANSVERSE & LONGITUDINAL DOWNELODDED JOINT
- 30 CONCRETE APPROX @ TRASH ENCLOSURE (NOT USED)
- 31 CONCRETE PAVING DETAIL @ DRIVE THRU LAKE
- 32 ALLUMINUM HANDRAIL ELEVATION
- 33 TYPICAL ADA RAMP & HAND RAIL
- 34 MULTI-ORDER POINT DIRECTIONAL ARROW DETAILS
- 35 DIRECTIONAL SIGN
- 36 DRIVE THRU ORDER POINT ISLAND CURB
- 37 MINI BOWSE LOOP DETECTION SYSTEM
- 38 ENTRY DOOR FROST SLAB DETAIL (NOT USED)
- 39 SIGNARY SENDER CLEANTOUT OUTSIDE BLDG (SEE UTILITY PLAN)
- 40 BUILDING CONNECTION DETAIL
- 41 TYPICAL SECTION AT WALK/CATCH BASIN DETAIL
- 42 STORE KEEP HOLE DETAIL
- 43 TYPICAL LIGHT POLE LOCATION (SEE ELECTRIC SHEETS FOR BASE DETAIL)
- 44 MENU BOARD & CUPBOARD ORDERING SYSTEM
- 45 FLAGPOLE - EXISTING TO REMAIN
- 46 SIGCOP TRAY (SEE ENTRY PLAN)
- 47 TRANSFORMER - EXISTING TO REMAIN
- 48 DAMPER/STORAGE BUILDING (EXISTING TO REMAIN)
- 49 CHICK-FL-A PRIME SIGN - EXISTING TO REMAIN
- 50 CHICK-FL-A DIRECTIONAL SIGN
- 51 ISOMETRIC EXPANSION JOINT, TYPICAL. INSTALL EXPANSION JOINT BETWEEN ALL CONCRETE PAVEMENT INTERFACE WITH BUILDINGS, CURB & GUTTER, AND OTHER CONTAINED OBJECTS.
- 52 THE CONTRACTOR SHALL REFER TO ARCHITECT PLANS FOR THE EXACT DIMENSIONS OF THE BUILDING AND THE LOCATION OF DOORWAYS, UTILITIES, ETC.
- 53 GATES TO BE INSTALLED BY BUILDING CONTRACTOR WITH DAMPER/STORAGE. COORDINATE WITH PAVEMENT INSTALLATION. (NOT USED)
- 54 CONCRETE VALLEY GUTTER AND GUTTER AS NECESSARY TO COMPLETE NEW CURB AND GUTTER CONSTRUCTION. PROVIDE EXPANSION JOINT BETWEEN NEW AND EXISTING CONCRETE.
- 55 THE CONTRACTOR SHALL INSTALL NECESSARY TRAFFIC CONTROL, SAFETY BARRICADES, LIGHTING, AND OTHER REQUIRED CONTROL MEASURES TO SECURE THE WORK AREA FROM EXISTING TRAFFIC AND TO INSURE PUBLIC SAFETY.
- 56 SIDEWALK CONNECTION DETAIL
- 57 CONCRETE VALLEY GUTTER WITH DETENTION POND
- 58 DELIVERY RAMP WITH EXTENDED SIDEWALK LANDING
- 59 HANDICAP RAMP DETAIL AT PAID FRONT ENTRY
- 60 HANDICAP RAMP DETAIL ADJACENT TO PAID FRONT ENTRY
- 61 DRAINAGE FLOWLINE DETAIL AT DRAINAGE STRUCTURE
- 62 PEDESTRIAN GUARD RAILING ADJACENT TO RETAINING WALL



US HWY. 176/ST. JAMES AVE.
(100' PUBLIC ROW)

SCALE 1"=20'
Scale
20 10 0 20 40
Feet

NOTICE:
ALL DIMENSIONS ARE MEASURED FROM FACE-OF-CURB, FACE-OF-STRUCTURE, EDGE-OF-PAVEMENT, OR CENTERLINE, AS APPLICABLE, UNLESS INDICATED OTHERWISE.



Robert George and Associates, Inc.
5200 Burrell Road
Atlanta Georgia,
30349-2996
PH 404-765-8000
FAX 404-684-8550

Revisions:
Mark Date By

Mark Date By

Seal



G. ROBERT GEORGE AND ASSOCIATES, INC.
CONSTRUCTIVE ENGINEERS, PLANNERS
AND LAND DEVELOPERS
100 S. GREEN ST. SUITE 100
COLUMBIA, SC 29201
TEL: (803) 766-0811
FAX: (803) 766-0811
www.rgassoc.com

STORE
SERIES 500C-RS7
FSU 02276

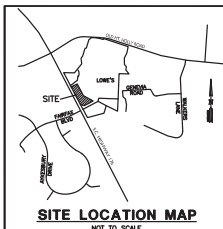
516 ST. JAMES AVE.
GOOSE CREEK, SC 29645

SHEET TITLE
**SITE
PLAN**
DWG EDITION 03.1

Legend:
P Preliminary
B 80% Submittal
D For Construction

Job No. : 2066
Store : 02276
Date : 7-15-2020
Drawn By : MSW
Checked By : MSW

C-2.0



**BEFORE YOU DIG
CALL 811**
1-800-721-7877

NOTICE: EXISTING UTILITY LOCATIONS

PROVIDE LOCATION AND IDENTIFICATION OF ANY UNDERGROUND UTILITY, STORM DRAINAGE FACILITIES, CABLES, AND OTHER RELATED CONSTRUCTION ACTIVITY. THE CONTRACTOR SHALL ALSO BE RESPONSIBLE TO COORDINATE DIRECTLY (AS NECESSARY) WITH EACH UTILITY PROVIDER TO OBTAIN APPROXIMATE UTILITY LOCATIONS. THE CONTRACTOR SHALL BE RESPONSIBLE TO ASSURE THAT ALL EXISTING UTILITIES HAVE BEEN LOCATED & MARKED TO PERFORM THE WORK IN A SAFE MANNER WITHOUT DAMAGE TO EXISTING UTILITIES.

THE CONTRACTOR SHALL VERIFY THE LOCATION, DIAMETER, PIPE MATERIAL, AND ELEVATION OF EXISTING UTILITIES AND STRUCTURES, AS APPLICABLE, PRIOR TO CONSTRUCTION.

FLOOD ZONE DATA

THIS PROPERTY IS LOCATED IN FLOOD ZONE "X" OF THE FLOOD INSURANCE RATE MAP NO. 48105-0105-0105 FOR BRIMLEY COUNTY, SOUTH CAROLINA, BEARING THE EFFECTIVE DATE OF OCTOBER 16, 2003. FLOOD ZONE "X" REPRESENTS AREAS DETERMINED TO BE OUTSIDE THE 0.2% ANNUAL CHANCE FLOODPLAIN. THE LIMITS OF SAID FLOOD ZONE ARE APPROXIMATE LOCATIONS ONLY AS TRANSPARENT BY GRAPHIC INTERPRETATION FROM THE FLOOD INSURANCE RATE MAP AND WERE NOT LOCATED BY FIELD SURVEY OR COORDINATE GEOMETRY.

EXISTING CONDITIONS AREA TABULATION

IMPERVIOUS AREA	4,540 SF
BUILDINGS	11,953 SF
CONCRETE	20,981 SF
ASPHALT PAVEMENT	37,053 SF (50.53%)
SUBTOTAL	
PERVIOUS AREA	29,702 SF (44.7%)
LANDSCAPE/OPEN SPACE	
TOTAL AREA	66,785 SF (1.53 ACRES)

NEW DEVELOPMENT AREA TABULATION

IMPERVIOUS AREA	4,905 SF
BUILDINGS	19,297 SF
CONCRETE	18,625 SF
ASPHALT PAVEMENT	23,534 SF (66.18%)
SUBTOTAL	
PERVIOUS AREA	23,521 SF (34.81%)
LANDSCAPE/OPEN SPACE	
TOTAL AREA	66,785 SF (1.53 ACRES)

DEVELOPMENT INFORMATION:

NAME OF DEVELOPER: CHICK-FL-A RESTAURANT

OWNER/APPLICANT: CHICK-FL-A, INC.
3000 BURNING WOOD ROAD
ALABAMA, GA 30099-0986
PHONE NO. (404) 765-0000
P.O.C. - OAK RIDGE, DAN FEDER
#1048 - 3344-COMMERCE-RT-14-001

ENGINEER: G. ROBERT GEORGE AND ASSOCIATES, INC.
114 NEW LANE
CHARLESTON, SC 29417
PHONE NO. 843-799-1111
P.O.C. - MICHELLE S. WHITE, P.E.
#1048 - 3344-COMMERCE-RT-14-001

PROPERTY ADDRESS: 516 ST. JAMES AVE.
GOOSE CREEK, SC 29445

TAX MAP #: PARCEL# 04-01-05-039
OR: TRAL, PL. 001

TOTAL PARCEL SIZE: 1.533 ACRES

ZONING INFORMATION: 15-1C (URBAN CORRIDOR)

EXISTING ZONING: CHICK-FL-A RESTAURANT

PROPOSED LAND USE: CHICK-FL-A RESTAURANT

EXISTING ZONING & LAND USE: N/A

FRONT - (N)

REAR - (S)

LEFT SIDE (W)

RIGHT SIDE (E)

ZONING: HYF 176

LAND USE: ACCESS DRIVE & SHOPS

LAND USE: LANDS PAVING LOT

REAR: (S)

REAR: (E)

REAR: (W)

REAR: (N)

REQUIRED MINIMUM BUILDING SETBACKS:

FRONT YTD: 30'
SIDE (DRIVING CENTER): 10'
SIDE (LOADING CENTER): 10'
MAX BUILDING HEIGHT ALLOWED: 30 FT

BUILDING DIMENSIONS: SEE SITE LAYOUT PLAN

SQUARE FOOTAGE AREA: 4844 SF (EXIST) - 4962 SF (REMODEL)

NUMBER OF SEATS: 134

HEIGHT SUBJECT: N/A

ACTUAL BUILDING HEIGHT: 12' 4" (MAX BUILDING)

BUILDING OCCUPANCY: 42 (RESTAURANT)

NUMBER OF STORIES: 2

TYPE OF CONSTRUCTION: REMODEL (1)

PARKING SUMMARY:

PROVIDED: CHICK-FL-A PARCEL

REGULAR SPACE: 56
10' SPACES: 3
10'-6" SPACES: 1
TOTAL: 60

REQUIRED: 1 SPACE/4 SEATS PLUS SPACE PER EMPLOYEE

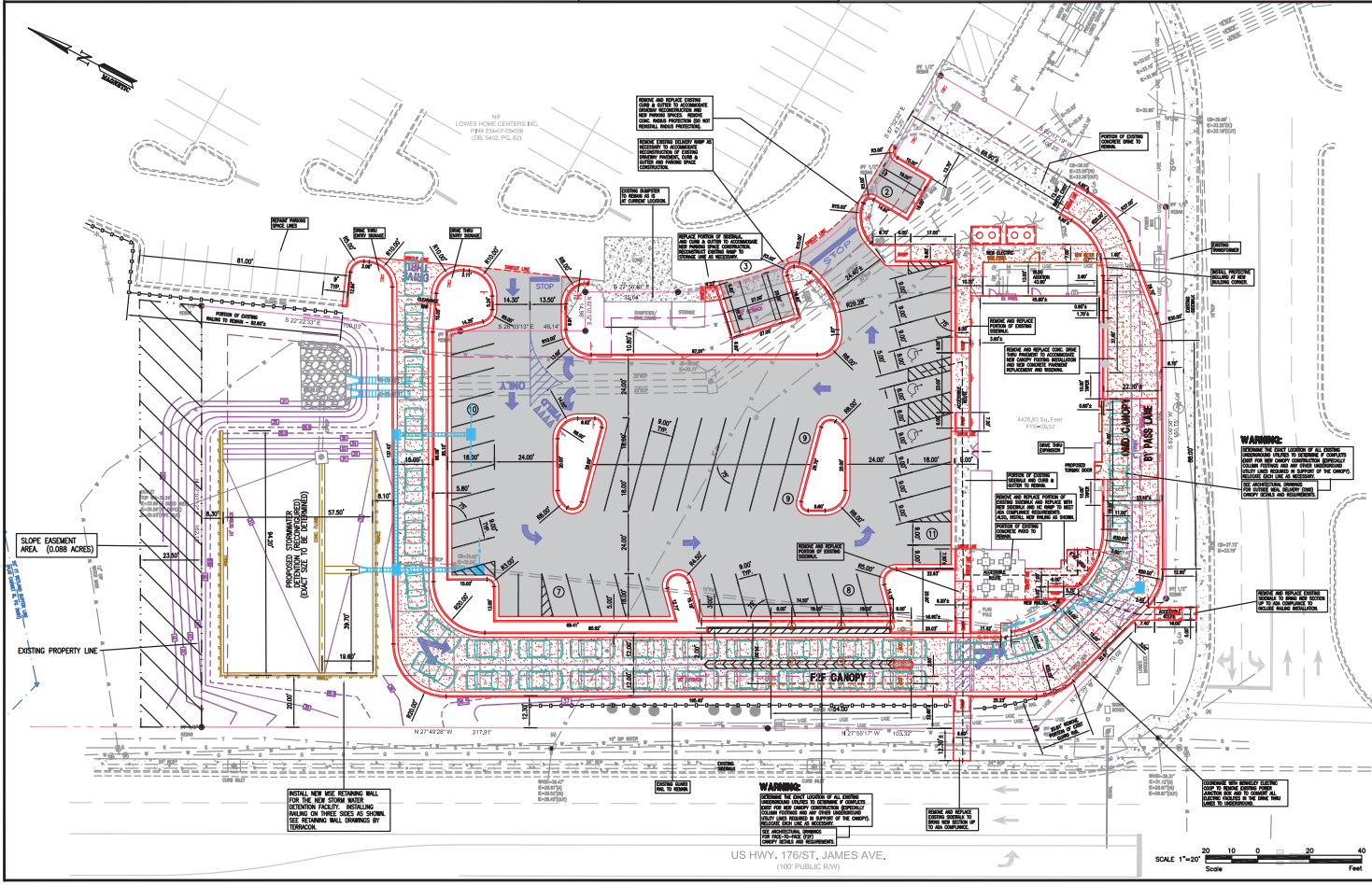
134 SEAT @ 1 SP/4 SEATS = 33.50
12 EMPLOYEES @ MINIMUM SP/4 = 12
REQUIRED TOTAL = 46 SPACES REQUIRED

- SITE PLAN DESIGN NOTES & KEY PLAN**
- DIRECTIONAL ARROW
 - DRIVE-THRU GRAPHICS
 - STOP LINE GRAPHIC
 - PAINTED HANDICAP PARKING SYMBOL
 - STANDARD PARKING SIGN & STOPPING DETAIL. NEUTRAL SIGN SHALL BE MARKED WITH "P" FOR STOPS AT 4" O.C. UNLESS NOTED OTHERWISE.
 - DIRECTIONAL SIGNAGE: ALL SIGNS SHALL conform to the MANUAL ON UNIFORM TRAFFIC CONTROL DEVICES by the U.S. DEPARTMENT OF TRANSPORTATION.
 - STOP SIGN (8'x8')
 - HANDICAP SIGN (8'x8')
 - NO ENTRY SIGN (8'x8')
 - YIELD SIGN (8'x8')
 - TRUCK APPROX/AVOID PROTECTION DETAIL (NOT USED)
 - 24" CURB AND GUTTER - OUTCLOSING & SPALLING
 - ROLLER-ROUNDER CURB (NOT USED)
 - TRASH ENCLOSURE FOUNDATION PLAN (NOT USED)
 - TRASH ENCLOSURE STORAGE BUILDING (SEE ARCHITECT PLAN)
 - TRASH ENCLOSURE ALT. DRAINAGE PLAN (NOT USED)
 - TRASH ENCLOSURE STORAGE BUILDING (SEE ARCHITECT PLAN)
 - WALKWAY DETAIL
 - TYPICAL PARKING SECTION
 - PARKING EDGE DETAIL
 - TRANSVERSE & LONGITUDINAL CONTRACTOR JOINT
 - TRANSVERSE & LONGITUDINAL DOWNELODDED JOINT
 - CONCRETE APPROX @ TRASH ENCLOSURE (NOT USED)
 - CONCRETE PAVING DETAIL @ DRIVE THRU LANE
 - ALLIUMBAR MINORAL ELEVATION
 - TYPICAL ADA RAMP & HAND RAIL
 - MULTI-ORDER POINT DIRECTIONAL ARROW DETAILS
 - ORISIGNALAR DETAIL
 - DRIVE THRU ORDER POINT ISLAND CURB
 - MINI BOWTIE LOOP DETECTION SYSTEM
 - ENTRY DOOR FROST SLAB DETAIL (NOT USED)
 - SIGNARY SENDER CLEANOUT OUTSIDE BLDG (SEE UTILITY PLAN)
 - BUILDING DOWNPOUT CONNECTION DETAIL
 - TYPICAL SECTION AT RILEY/CATCH BASIN DETAIL
 - STORE KEEP HOLE DETAIL
 - TYPICAL LIGHT POLE LOCATION (SEE ELECTRIC SHEETS FOR BASE DETAIL)
 - NEW BOARD & CHIMNEY ORDERING SYSTEM
 - PLAQUE - EXISTING TO REMAIN
 - GRADE TRIP (SEE UTILITY PLAN)
 - TRANSFORMER - EXISTING TO REMAIN
 - DUMPSTER/STORAGE BUILDING (EXISTING TO REMAIN)
 - CHICK-FL-A PRIME SIGN (EXISTING TO REMAIN)
 - CHICK-FL-A DIRECTIONAL SIGN
 - EXPANSION JOINT, TYPICAL. INSTALL EXPANSION JOINT BETWEEN ALL CONCRETE PAVEMENT INTERFACES WITH BUILDINGS, CURB & GUTTER, AND OTHER CONTAINED OBJECTS.
 - SEE CONTRACTOR SHALL REFER TO ARCHITECT PLANS FOR THE EXACT DIMENSIONS OF THE BUILDING AND THE LOCATION OF DOORWAYS, UTILITIES, ETC.
 - GATES TO BE INSTALLED BY BUILDING CONTRACTOR WITH DUMPSTER STORAGE. COORDINATE WITH PAVEMENT INSTALLATION. (NOT USED)
 - CONCRETE VALLEY GUTTER AND GUTTER AS NECESSARY TO COMPLETE NEW CURB AND GUTTER CONNECTION. PROVIDE EXPANSION JOINT BETWEEN NEW AND EXISTING CONCRETE.
 - THE CONTRACTOR SHALL INSTALL NECESSARY TRAFFIC CONTROL, SAFETY BARRIAGES, LIGHTING, AND OTHER REQUIRED CONTROL MEASURES TO SECURE THE WORK AREA FROM EXISTING TRAFFIC AND TO ASSURE PUBLIC SAFETY.
 - SIDEWALK CONNECTION DETAIL
 - CONCRETE VALLEY GUTTER WITH DETENTION POND
 - DELIVERY RAMP WITH EXTENDED SIDEWALK LANDING
 - HANDICAP RAMP DETAIL AT PAID FRONT ENTRY
 - HANDICAP RAMP DETAIL ADJACENT TO PAID FRONT ENTRY
 - DRAINAGE PLUMB DETAIL AT DRAINAGE STRUCTURE
 - PEDESTRIAN GUARD RAILING ADJACENT TO RETAINING WALL

NOTICE: PEDESTRIAN SAFETY

THE CONTRACTOR SHALL TAKE NECESSARY MEASURES TO SEPARATE EACH WORK AREA FROM PEDESTRIAN TRAFFIC AND TO ASSURE SAFE PEDESTRIAN PASSAGE AT ALL TIMES.

THE CONTRACTOR SHALL ALSO UTILIZE SAFETY BARRIAGES, SIGNAGE, AND OTHER RELATED MEASURES, AS NECESSARY. THE CONTRACTOR SHALL COORDINATE PERIODICALLY WITH THE PROJECT MANAGER TO REVIEW SAFETY CONCERNS AND ADVISE OF ACTIVE WORK AREAS.



Revisions:

1	2	3	4	5	6	7	8	9	10	11	12	13	14	15	16	17	18	19	20	21	22	23	24	25	26	27	28	29	30	31	32	33	34	35	36	37	38	39	40

Seal:

SOUTH CAROLINA
REGISTERED PROFESSIONAL ENGINEER
MICHAEL S. WHITE
No. 10975

SOUTH CAROLINA
REGISTERED PROFESSIONAL ENGINEER
MICHAEL S. WHITE
No. 10975

NOTICE:

ALL DIMENSIONS ARE MEASURED FROM FACE-OF-CURB, FACE-OF-STRUCTURE, EDGE-OF-PAVEMENT, OR CENTERLINE, AS APPLICABLE, UNLESS INDICATED OTHERWISE.

Crab Creek

5200 Buffington Rd.
Atlanta Georgia,
30349-2996
PH 404-765-8000
FAX 404-684-8550

Revisions:

Mark Date By

Seal:

SOUTH CAROLINA
REGISTERED PROFESSIONAL ENGINEER
MICHAEL S. WHITE
No. 10975

SOUTH CAROLINA
REGISTERED PROFESSIONAL ENGINEER
MICHAEL S. WHITE
No. 10975

G. ROBERT GEORGE AND ASSOCIATES, INC.

REGISTERED PROFESSIONAL ENGINEER
AND LAND SURVEYOR
114 NEW LANE
CHARLESTON, SC 29417-1111
PHONE: 843-799-1111
FAX: 843-799-1111
www.georgeandassociates.com

STORE

SERIES 500C-RS7
FSU 02276

516 ST. JAMES AVE.
GOOSE CREEK, SC 29445

SHEET TITLE

SITE PLAN LAYOUT

DWG EDITION 03.1

Preliminary
80% Submittal
For Construction

Job No. : 2066
Store : 02276
Date : 7-15-2020
Drawn By : MSW
Checked By : MSW
Sheet

C-2.0

0001 2006-022000.DWG