



**Architectural Review Board
Monday, April 16, 2018
6:30 p.m.**

**City of Goose Creek
Marguerite H. Brown Municipal Center
519 N. Goose Creek Blvd.
Goose Creek, South Carolina**



MEMORANDUM

TO: Members of the Architectural Review Board

FROM: Brenda Moneer
Planning and Zoning Specialist

DATE: April 13, 2018

SUBJECT: Notification of ARB Meeting

This is to inform you that the Architectural Review Board (ARB) will meet Monday, April 16, 2018, 6:30 p.m. at City Hall. Enclosed please find agenda material for the meeting.

If you have any questions or comments, please don't hesitate to contact me at 797-6220 ext. 1116, or Kara at ext. 1118. We look forward to seeing you Monday evening.

AGENDA
CITY OF GOOSE CREEK
ARCHITECTURAL REVIEW BOARD MEETING
MONDAY, APRIL 16, 2018 6:30 P.M.
MARGUERITE BROWN MUNICIPAL CENTER
CITY HALL COUNCIL CHAMBERS
519 N. GOOSE CREEK BLVD.

VISION STATEMENT:

Goose Creek is a city that has achieved a balance between growth, the environment, and the preservation of its small town character. The city's primary concern is for the lifelong needs of all its citizens. Goose Creek is a partnership between its government and its people in the determination of the city's future.

MISSION STATEMENT:

Objectively guide the evolution of commercial and industrial projects creating a synergy between the business and residential community consistent with the city of Goose Creek's vision statement.

THE PROCEDURE FOR PARTICIPATION WILL BE AS FOLLOWS:

Minor applications will be allotted three (3) minutes to present to the Board, major applications will be allotted five (5) minutes to present. Board members will be allowed to ask questions and to discuss merits of the application following the presentations. The question/discussion period by the Board will be limited to five (5) minutes for minor applications and ten (10) minutes for major applications.

AGENDA:

- I.** Call to Order – Chairperson Sharon Clopton
- II.** Review of Minutes from March 19, 2018
- III.** New Business – Minor Applications
 - A. The UPS Store – 431 St. James Ave.
 - B. Charleston Self Defense Academy – 428 Red Bank Rd.
 - C. Wendy's – Signage – 101 Red Bank Rd.
- IV.** New Business – Major Applications
 - D. McDonalds – Upfit – 609 St. James Ave
- V.** Comments from Board
- VI.** Comments from Staff
- VII.** Adjournment

Please note this Agenda was posted at City Hall and on the City Website prior to meeting.

**MINUTES
CITY OF GOOSE CREEK
ARCHITECTURAL REVIEW BOARD MEETING
MONDAY, MARCH 19, 2018, 6:30 P.M.
MARGUERITE H. BROWN MUNICIPAL CENTER
519 N. GOOSE CREEK BOULEVARD**

I. Call to Order – Chairperson, Sharon Clopton

Motion: at 6:30 pm, **Action:** Called Meeting to Order, **Moved by** Sharon Clopton
Roll Call-
Present: **Joel Arenson, Gary Becker, Lisa Burdick, Sharon Clopton,**
Absent: David Cantrill, Tom Risso
Staff Present: Kara Browder, Brenda Moneer

II. Review of Minutes from February 19, 2018

Motion: Approve the minutes as presented., **Moved by** Gary Becker,
Seconded by Joel Arenson.
Discussion: There was none.
Vote: All voted in favor. (**summary:** Yes = 4).

III. Old Business – Minor Applications

A. Popeyes – Elevations, Colors, Materials

The applicant presented a revised color proposal to the Board, with three alternate choices. There was discussion about the original colors as submitted. Chairperson Clopton inquired about the water table material. The applicant stated it would be stone. The Board compared the colors presented in the past with the current proposal.

Motion: Approve the application using the “310ST0” stone sand finish, and the “1015 Mocha Crème” coloring., **Moved by** Joel Arenson, **Seconded by** Lisa Burdick.
Discussion: **There was none.**
Vote: All voted in favor. (**summary:** Yes = 4).

B. E-Z Auto Now - Elevations

The applicant presented the revised application of the elevations to include a water table, and metal canopy over the front entry to the Board. There was discussion about the roof line, new modifications, and the elevations as submitted previously.

Motion: Approve the application with the revised elevation as re-submitted at the meeting, with the iron ore slate water table. **Moved by** Joel Arenson, **Seconded by** Gary Becker.

Discussion: Chairperson Clopton inquired about the depth of the metal canopy, and how it would be installed. The applicant stated it would be blue metal that would be 3' x 15' and would tie into the building joist. Mr. Becker inquired about the HVAC equipment. The applicant stated it would be screened.

Vote: All voted in favor. (**summary:** Yes = 4).

There was a brief discussion about the HVAC screening with Staff. Staff recommended that the applicant bring the lighting fixtures back to the Board for review, along with signage. Mr. Becker stated concern for broken down vehicles. The applicant stated this would be auto sales, and they would not be doing any repairs on site.

IV. Comments from the Board

Mr. Becker inquired about the Mexican restaurant exterior painting. Staff stated that a certified letter had been sent out to the owner to contact the Planning office. Chairperson Clopton stated concern for the yellow bollards behind Optical Impressions the layout and orientation of the property. There was discussion about the color of the bollards and if they must be yellow. Staff presented an idea to help with the review during the meetings.

V. Comments from Staff

Ms. Browder followed up with zoning violations as discussed at the previous meeting. There was discussion about landscaping reviews and requirements. There was some discussion about the All-Star Storage requesting a unified signage for each tenant within the new addition. Ms. Browder mentioned that the Planning Commission requested to review the sign ordinance language. There was discussion about the proliferation of bandit signage. Staff also mentioned the signage at the Corbett Plaza had been changed without coming back for the Board to review the shopping center name.

VI. Adjournment

Motion: Motion to adjourn at 7:29 pm., **Action:** Adjourn, **Moved by** Gary Becker, **Seconded by** Joel Arenson.

Discussion: **There was none.**

Vote: All voted in favor. (**summary:** Yes = 5).

_____ Date _____
Sharon Clopton, Chairperson



ARCHITECTURAL REVIEW BOARD SIGN FORM

ARB MEETING DATE: APRIL 16, 2018

BUSINESS NAME: **UPS STORE**
LOCATION: **431 ST. JAMES AVE. UNIT C**
NUMBER & TYPE OF SIGNS APPLYING FOR: **1 WALL MOUNT SIGN,**
NUMBER OF ALLOWABLE SIGNS: **2 WALL MOUNTED SIGNS**
MAXIMUM ALLOWABLE SIGN AREA: **30SF**

NOTE: STAFF RECOMMENDS THAT THE FAÇADE BE PAINTED THE SAME COLOR PRIOR TO INSTALLATION OF NEW SIGNAGE - NO TENANT PANEL WITH THIS APPLICATION

GENERAL INFORMATION:

SIGN	SIGN 1	SIGN 2	SIGN 3	SIGN 4	SIGN 5
TYPE (W= WALL-MOUNTED/F=FREESTANDING)	W				
HEIGHT	2.6'				
WIDTH	14.2'				
AREA	21.75 SF				
COLOR	Gold/White/Brown				
MATERIALS	Alum./Plastic				
SIZE OF GRAPHIC	5.25 SF				
IS IT ILLUMINATED?	Interior				
IF YES, WHAT TYPE AND WATTAGE?					

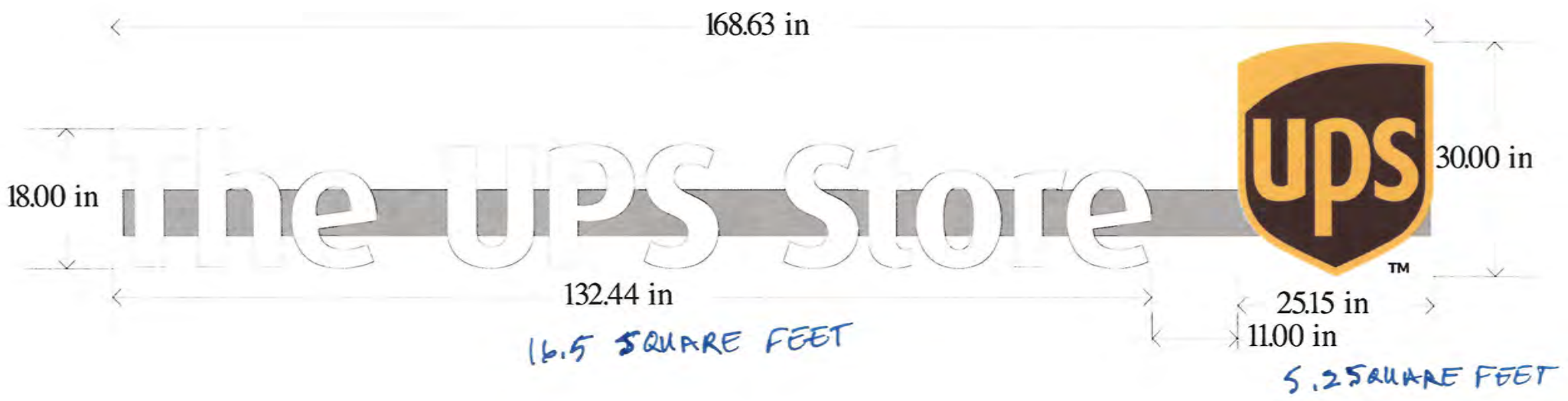
ONLY APPLICABLE TO WALL-MOUNTED SIGNS:

REFERENCE SIGN # (FROM ABOVE)	SIGN 1	SIGN 2	SIGN 3	SIGN 4	SIGN 5
FRONT LINEAR FRONTAGE OF BUSINESS	20'				
DISTANCE FROM BUSINESS TO PROPERTY LINE	336' +/-				
TOTAL NUMBER OF LETTERING STYLES	1				
SPACE BETWEEN LETTERS (FOR CHANNEL LETTERS)	2"				
SPACE BETWEEN WORDS (FOR CHANNEL LETTERS)	4"				
HEIGHT OF LETTERS	18"				
PROJECTION FROM WALL	5"				

ONLY APPLICABLE TO FREESTANDING SIGNS:

REFERENCE SIGN # (FROM ABOVE)	SIGN 1	SIGN 2	SIGN 3	SIGN 4	SIGN 5
DISTANCE FROM STREET CURB					
HEIGHT ABOVE GRADE					
BASE LANDSCAPING					

LANDLORD APPROVAL LETTER RECEIVED YES NO N/A
PERMIT PAID YES NO N/A
SAMPLE MATERIALS ATTACHED YES NO N/A



168.63 in

18.00 in

The UPS Store

132.44 in

16.5 SQUARE FEET



30.00 in

25.15 in
11.00 in

5.25 SQUARE FEET



843-571-3500

3915 SAVANNAH HWY.
JOHNS ISLAND, SC 29455



Review proof for spelling, size, quantity and accuracy. Please fax back or e-mail any changes. If approved, sign the proof and fax back or give email approval. More than 3 artwork changes, or any artwork changes after approval is received, will result in additional charges.

SIGNS BY ROBERTS & SONS INC. WILL ENDEAVOR TO CLOSLEY MATCH COLORS, INCLUDING PMS, WHERE SPECIFIED. WE CANNOT GUARANTEE EXACT MATCHES DUE TO VARYING COMPATIBILITY OF INK, PAINT OR MATERIAL USED. ALL ILLUMINATION IS 120 VOLTS UNLESS OTHERWISE SPECIFIED. 120 VAC. PRIMARY POWER TO SIGN & FINAL HOOKUP BY OTHERS. SIGN CIRCUITS REQUIRE DEDICATED HOT, NEUTRAL, AND GROUND TERMINATING AT PANEL.

LANDLORD APPROVAL

DATE: _____

SCALE:
THIS DESIGN IS THE PROPERTY OF SIGNS BY ROBERTS & SONS INC. AND IS SUBMITTED FOR YOUR USE IN CONJUNCTION WITH A PROJECT BEING PLANNED FOR YOU BY SIGNS BY ROBERTS AND SONS. IT CANNOT BE REPRODUCE IN WHOLE OR IN PART WITHOUT OUR WRITTEN CONSENT.

CLIENT: _____

SIGN LAYOUT: _____

DATE: _____

SALES PERSON: _____

ARTWORK PHASE:

CONCEPTUAL

REVISION:

FINAL ARTWORK

PRODUCTION

SHOP DRAWING

CLIENT APPROVAL

INITIALS: _____ DATE: _____

PRODUCTION APPROVAL TO MFR.

INITIALS: _____ DATE: _____

DO NOT MANUFACTURE WITHOUT APPROVALS
THE BOXES ABOVE MUST BE INITIALED AND DATED PRIOR TO MANUFACTURING



ARCHITECTURAL REVIEW BOARD SIGN FORM

ARB MEETING DATE: APRIL 16, 2018

BUSINESS NAME: **CHARLESTON SELF DEFENSE**
LOCATION: **428 RED BANK RD.**
NUMBER & TYPE OF SIGNS APPLYING FOR: **1 WALL MOUNT SIGN,**
NUMBER OF ALLOWABLE SIGNS: **2 WALL MOUNTED SIGNS**
MAXIMUM ALLOWABLE SIGN AREA: **112.5SF**

NOTE: STAFF RECOMMENDS THAT THE FAÇADE BE PAINTED THE SAME COLOR PRIOR TO INSTALLATION OF NEW SIGNAGE

GENERAL INFORMATION:

SIGN	SIGN 1	SIGN 2	SIGN 3	SIGN 4	SIGN 5
TYPE (W= WALL-MOUNTED/F=FREESTANDING)	W				
HEIGHT	5'				
WIDTH	14'				
AREA	70 SF				
COLOR	Red/White/Black				
MATERIALS	Alum./Metal/Acrylic				
SIZE OF GRAPHIC	See attached				
IS IT ILLUMINATED?	Interior				
IF YES, WHAT TYPE AND WATTAGE?					

ONLY APPLICABLE TO WALL-MOUNTED SIGNS:

REFERENCE SIGN # (FROM ABOVE)	SIGN 1	SIGN 2	SIGN 3	SIGN 4	SIGN 5
FRONT LINEAR FRONTAGE OF BUSINESS	75'				
DISTANCE FROM BUSINESS TO PROPERTY LINE	345'				
TOTAL NUMBER OF LETTERING STYLES	2				
SPACE BETWEEN LETTERS (FOR CHANNEL LETTERS)	n/a				
SPACE BETWEEN WORDS (FOR CHANNEL LETTERS)	n/a				
HEIGHT OF LETTERS	n/a				
PROJECTION FROM WALL	8"				

ONLY APPLICABLE TO FREESTANDING SIGNS:

REFERENCE SIGN # (FROM ABOVE)	SIGN 1	SIGN 2	SIGN 3	SIGN 4	SIGN 5
DISTANCE FROM STREET CURB					
HEIGHT ABOVE GRADE					
BASE LANDSCAPING					

LANDLORD APPROVAL LETTER RECEIVED YES NO N/A
PERMIT PAID YES NO N/A
SAMPLE MATERIALS ATTACHED YES NO N/A



CHARLESTON

SELF DEFENSE ACADEMY

KRAV MAGA - BOXING - KICKBOXING - JIU JITSU - JUDO



14'

CHARLESTON
SELF DEFENSE ACADEMY
KRAV MAGA - BOXING - KICKBOXING - JIU JITSU - JUDO

5'

17'

75'



ARCHITECTURAL REVIEW BOARD SIGN FORM

ARB MEETING DATE: APRIL 16, 2018

BUSINESS NAME: **WENDY'S**
LOCATION: **101 RED BANK ROAD**
NUMBER & TYPE OF SIGNS APPLYING FOR: **1 WALL MOUNT SIGN, 1 MONUMENT, 2 INFORMATIONAL**
NUMBER OF ALLOWABLE SIGNS: **2 WALL MOUNTED SIGNS**
MAXIMUM ALLOWABLE SIGN AREA: **30SF WALL MOUNT, 50 SF MONUMENT, 6SF INF. EA**

GENERAL INFORMATION:

SIGN	SIGN 1	SIGN 2	SIGN 3	SIGN 4	SIGN 5
TYPE (W= WALL-MOUNTED/F=FREESTANDING)	W	M	INFO.		
HEIGHT	3'	4'-2"	2'		
WIDTH	10.75'	7'-4"	2'-2"		
AREA	32.25 SF	31 SF	4.34 SF		
COLOR	Blue/White/Brown Red,Flesh,Bronze	Blue/White/Brown Red,Flesh,Bronze	Blue/White/Brown Red,Flesh,Bronze		
MATERIALS	Metal/Plastic	Metal, Plastic	Plastic/Acrylic		
SIZE OF GRAPHIC	30"x36"	42"x36"	8"x10"		
IS IT ILLUMINATED?	Yes	Yes	Yes		
IF YES, WHAT TYPE AND WATTAGE?	Int. LED	Int. LED	Interior fluorescent		

ONLY APPLICABLE TO WALL-MOUNTED SIGNS:

REFERENCE SIGN # (FROM ABOVE)	SIGN 1	SIGN 2	SIGN 3	SIGN 4	SIGN 5
FRONT LINEAR FRONTAGE OF BUSINESS	30'				
DISTANCE FROM BUSINESS TO PROPERTY LINE	25'				
TOTAL NUMBER OF LETTERING STYLES	1				
SPACE BETWEEN LETTERS (FOR CHANNEL LETTERS)	See attached				
SPACE BETWEEN WORDS (FOR CHANNEL LETTERS)	See attached				
HEIGHT OF LETTERS	See attached				
PROJECTION FROM WALL	20"				

ONLY APPLICABLE TO FREESTANDING SIGNS:

REFERENCE SIGN # (FROM ABOVE)	SIGN 1	SIGN 2	SIGN 3	SIGN 4	SIGN 5
DISTANCE FROM STREET CURB		20'			
HEIGHT ABOVE GRADE		10'			
BASE LANDSCAPING		Seasonals & evergrs			
LANDLORD APPROVAL LETTER RECEIVED		<input type="checkbox"/> YES	<input type="checkbox"/> NO	<input checked="" type="checkbox"/> N/A	
PERMIT PAID		<input checked="" type="checkbox"/> YES	<input type="checkbox"/> NO	<input type="checkbox"/> N/A	
SAMPLE MATERIALS ATTACHED		<input type="checkbox"/> YES	<input checked="" type="checkbox"/> NO	<input type="checkbox"/> N/A	

EXISTING CONDITIONS



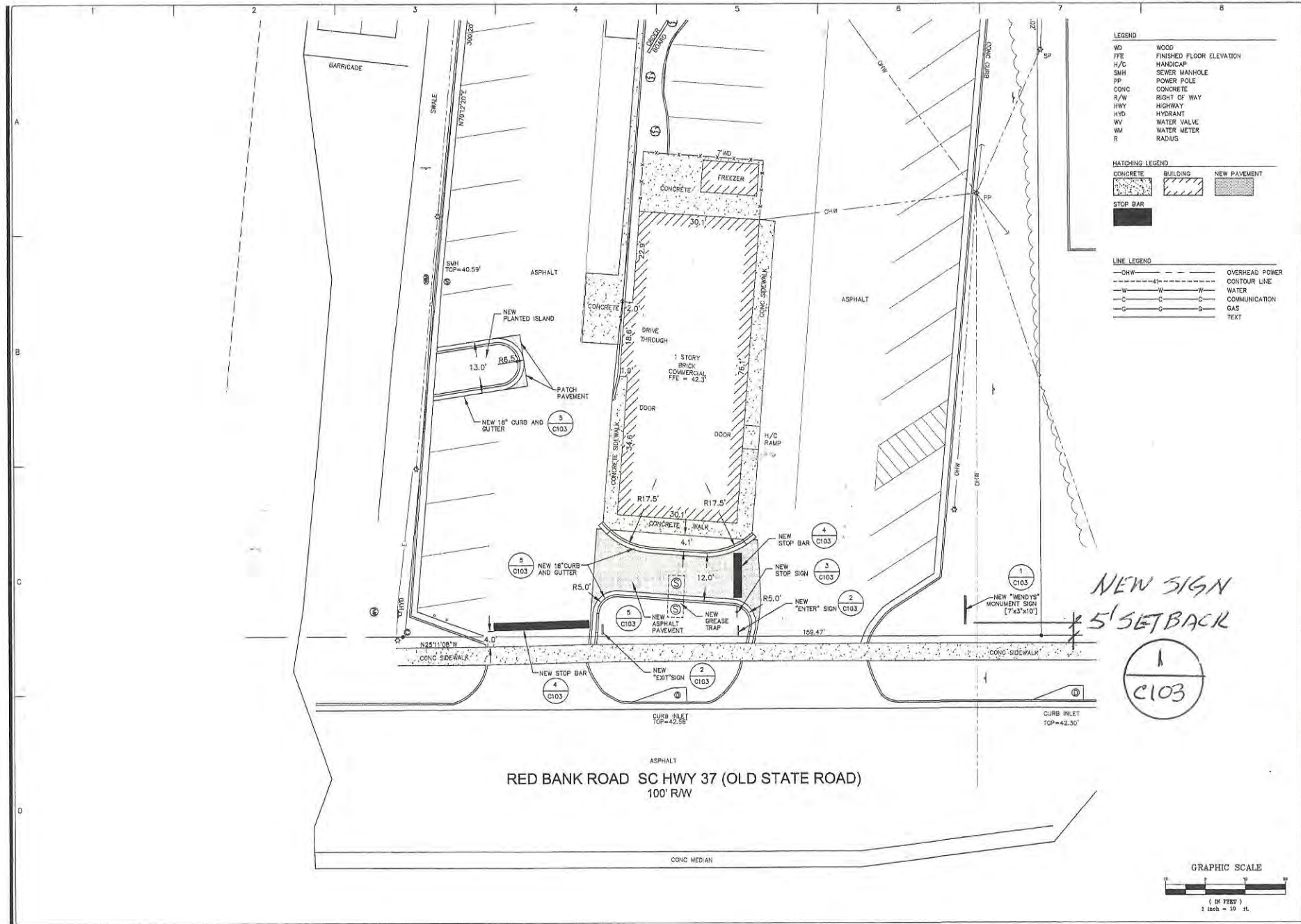
Waldo ©DreamWorks Distribution Limited. All rights reserved. Image capture: Jun 2017 © 2018 Google

Goose Creek, South Carolina

Google, Inc.

Street View - Jun 2017





FORSBERG ENGINEERING AND SURVEYING, INC.
 1507 SANDHURST DRIVE, SUITE B
 CHARLESTON, SOUTH CAROLINA 29407
 TEL: 703.886.8888 FAX: 703.886.8889
 CIVIL ENGINEERING, LAND SURVEYING AND LANDSCAPE ARCHITECTURE



WENDYS
NEW SITE PLAN
101 REDBANK ROAD
 GOOSE CREEK, SOUTH CAROLINA 29645



DANIEL C. FORSBERG

DATE

03/27/2018

DRAWN/CHECKED

WFS/DCF

LAST REVISED

REVISION

APPROVED

DCF

SCALE

1"=10'

PROJECT NO.

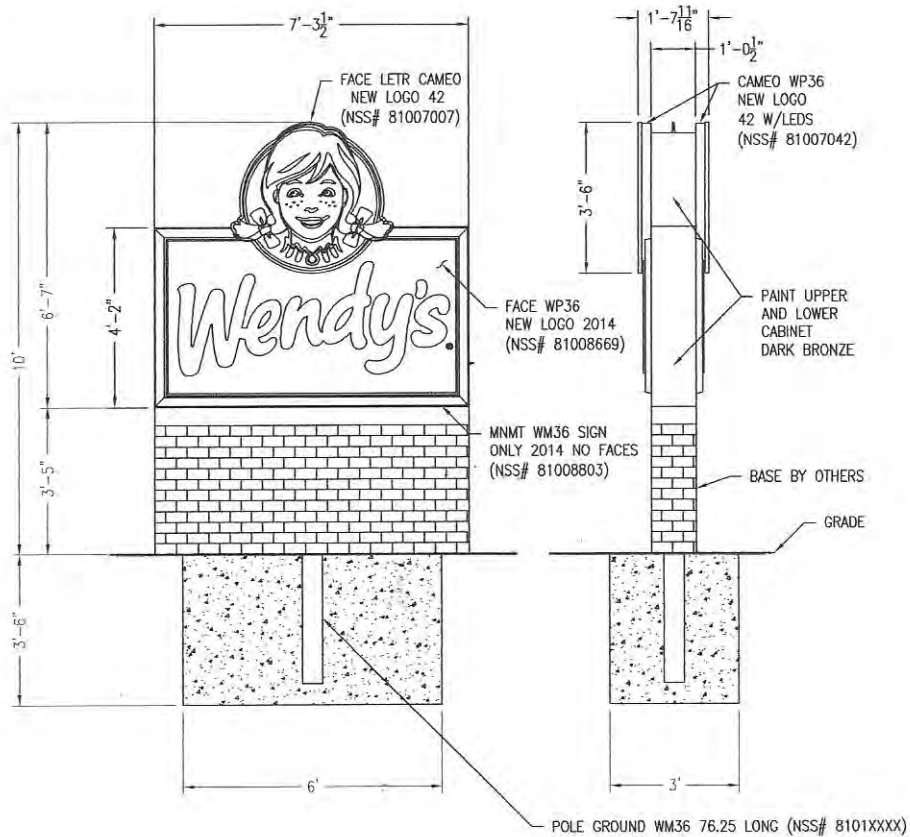
5190

SHEET NUMBER

C102

OF TOTAL

1
C103



PROOF

NOTES:

FACES:

.177" THEROMFORMED MUSTANG ACRYLIC 1/2" EMBOSSED, 1-3/4" PAN.

SIGN AREA

PYLON

ACTUAL - 37.32 SQ. FT.

NEAREST RECTANGLE - 48 SQ. FT.

ELECTRICAL DETAILS:

(8) LAMP FR6-H48 REPLACEMENT LED BITRO

(40) BITRO OPTICS PRO PLUS LED'S

(2) 100W UNIVERSAL POWER SUPPLIES

(1) 60W UNIVERSAL POWER SUPPLIES

TOTAL LOAD: 5.6 A @ 120/60HZ

COLORS:

PYLON CABINET AND POLE COVERS: DARK BRONZE.

POLE & FOUNDATION REQUIREMENTS:

4" SCHEDULE 40 SIGN POLE STUBBED AND SHIMMED 5" SCHED 40 PIPE - 76- 1/4" LONG

GROUND POLE.

3' X 6' X 3'-6" DEEP SLAB FOUNDATION

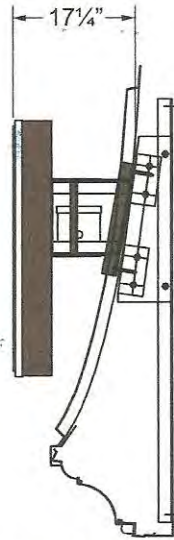
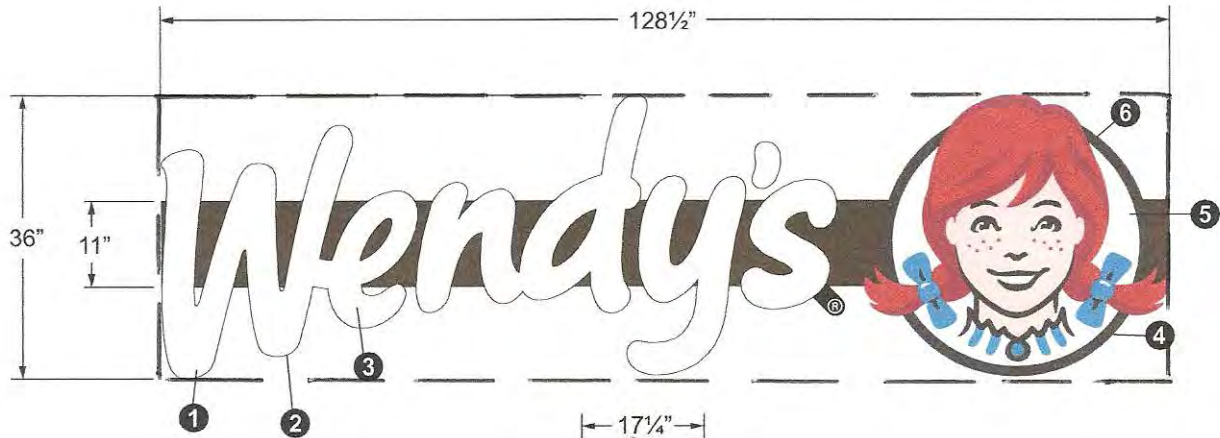
This UL listed sign is manufactured to meet and/or exceed Underwriters Laboratories Subject 48 for Electric Signs.

DESIGN ASSUMPTIONS

- 90 MPH BASIC WIND SPEED, Exp C PER 2002 OBC
- SOIL-UNDISTURBED (NEAT EXCAVATION IN SOIL), LATERAL SOIL BEARING PRESSURE = 150 PSF PER FOOT OF DEPTH
- STEEL-TUBE - ASTM A500 GRADE B
-PIPE - ASTM A53 GRADE B
-PLATE - ASTM A36
- CONCRETE-3000PSI @ 28 DAYS
- REBAR-ASTM A615 GRADE 60
- BOLTS-ASTM A325 OR A490
- ANCHOR BOLTS-ASTM A36 OR A307



15.62 sq.ft. actual size; 32.125 sq.ft. nearest rectangle.



MOUNTING VIEW

MATERIALS

- ① Letter faces - thermo-formed 1/8" acrylic faces with 1/2" embossment.
- ② Letter return - 5" deep .040 aluminum
- ③ Letter Illumination- white LEDs.*
- ④ Cameo return - 5" deep .040 aluminum
- ⑤ Cameo face - full color cameo thermo-formed with 1/8" acrylic face with 1/2" embossment.
- ⑥ Cameo Illumination - white LEDs.*

Total electrical load = 1.2 amps. Requires 1-20 amp circuit @ 120v/60Hz.

COLORS & FINISHES

- Brown (PMS 439C - outline)
- Blue (PMS 299C - bow, shirt, brooch)
- Flesh (PMS 698C - face, neck)
- Red (PMS 186C - hair, freckles)
- Dark Red (PMS 201C - hair outline)
- White (cameo face, letters)

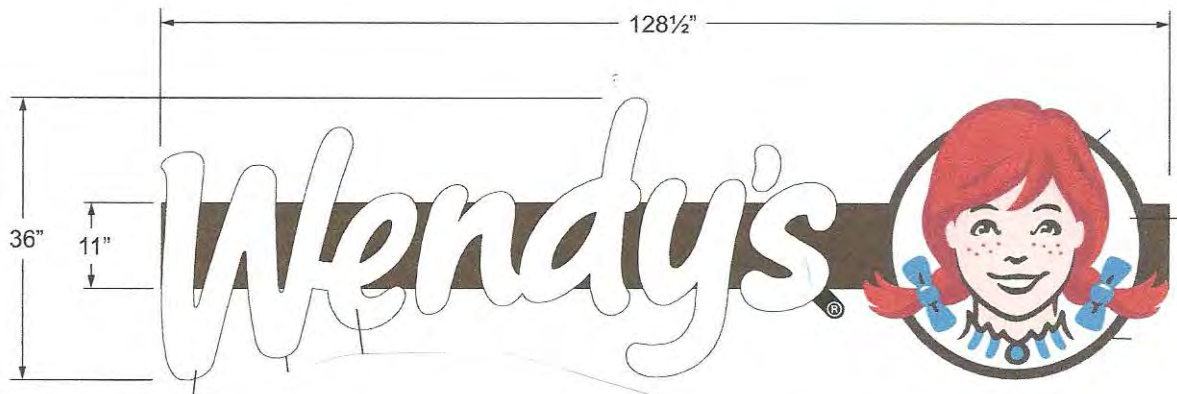
Cameo available for individual purchase.
Call for details.

PICK UP WINDOW
 TRY OUR NEW
 BACON
 PORTABELLA
 BLOCK ENTRANCE/EXIT

EXISTING SIGN & CAMEO (3'H x 9'W =
 27 SQ. FT.)
 TO BE REPLACED



15.62 sq.ft. actual size; 32.125 sq.ft. nearest rectangle.



PROPOSED NEW SIGN & CAMEO

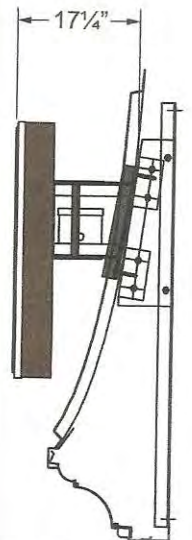
MATERIALS

- Letter faces - thermo-formed 1/8" acrylic faces with 1/2" embossment.
- Letter return - 5" deep .040 aluminum
- Letter Illumination- white LEDs.*
- Cameo return - 5" deep .040 aluminum
- Cameo face - full color cameo thermo-formed with 1/8" acrylic face with 1/2" embossment.
- Cameo Illumination - white LEDs.*

COLORS & FINISHES

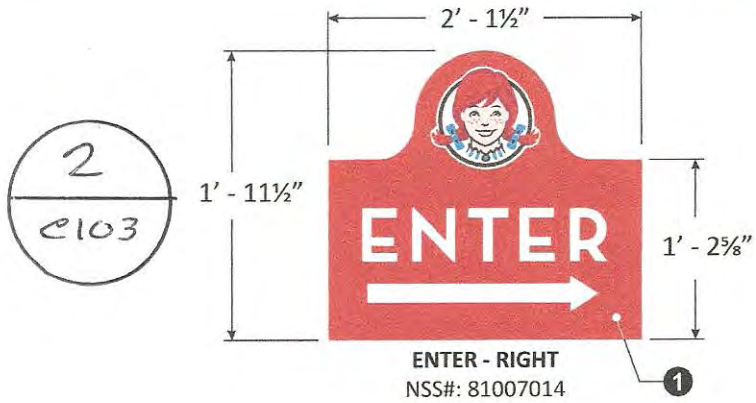
- Brown (PMS 439C - outline)
- Blue (PMS 299C - bow, shirt, brooch)
- Flesh (PMS 698C - face, neck)
- Red (PMS 186C - hair, freckles)
- Dark Red (PMS 201C - hair outline)
- White (cameo face, letters)

Cameo available for individual purchase. Call for details.



MOUNTING VIEW

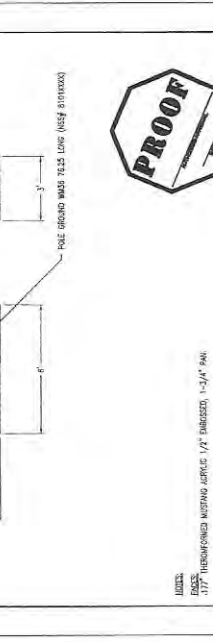
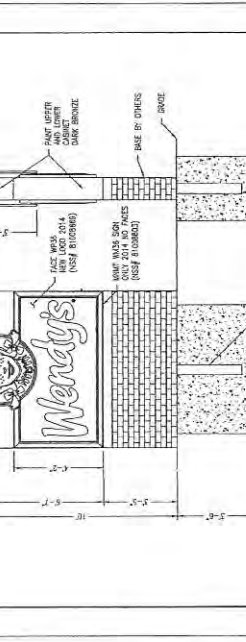
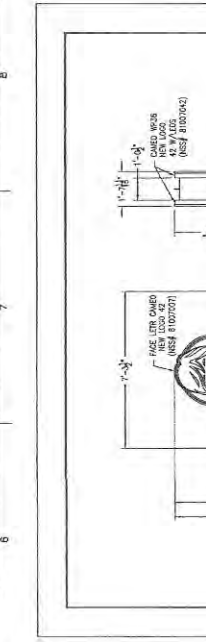
Total electrical load = 1.2 amps. Requires 1-20 amp circuit @ 120v/60Hz.



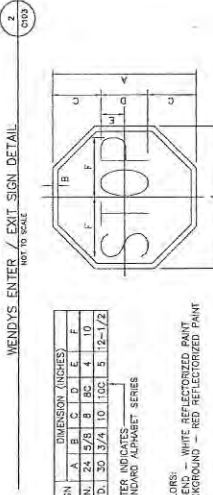
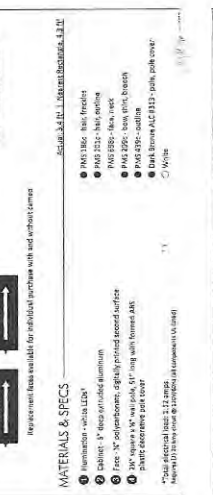
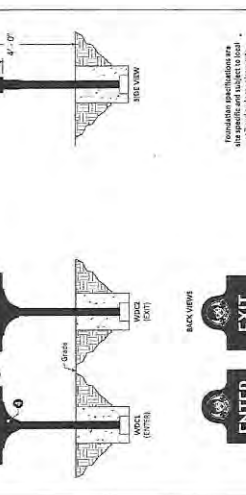
MATERIALS & SPECS

1 Face - (2) 1/8" flat polycarbonate digitally printed second surface

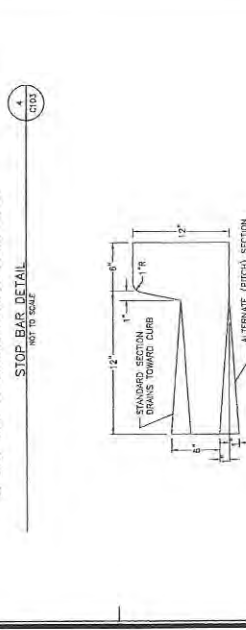
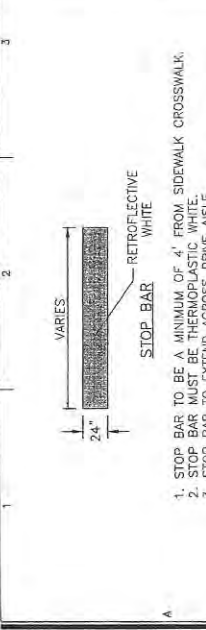
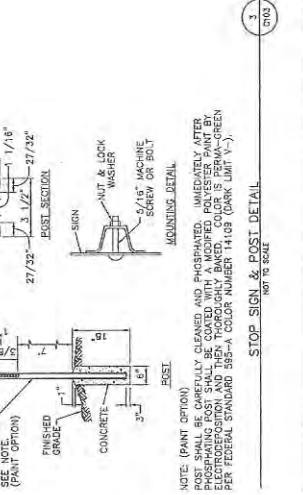
- PMS 186c - hair, freckles
- PMS 201c - hair, outline
- PMS 698c - face, neck
- PMS 299c - bow, shirt, brooch
- PMS 439c - outline
- White



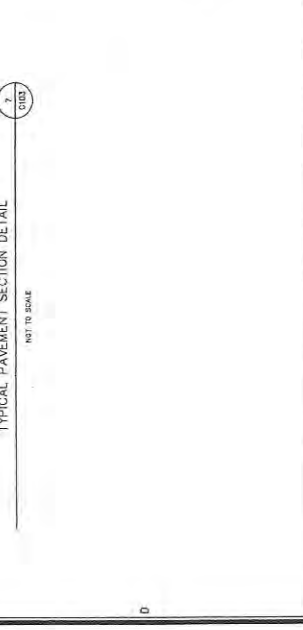
NOTES:
 1. ALL DIMENSIONS UNLESS OTHERWISE NOTED.
 2. SIGN SHALL BE MOUNTED TO 4" X 4" STEEL POST FOUNDATION.
 3. SIGN SHALL BE MOUNTED TO 4" X 4" STEEL POST FOUNDATION.
 4. SIGN SHALL BE MOUNTED TO 4" X 4" STEEL POST FOUNDATION.
 5. SIGN SHALL BE MOUNTED TO 4" X 4" STEEL POST FOUNDATION.
 6. SIGN SHALL BE MOUNTED TO 4" X 4" STEEL POST FOUNDATION.
 7. SIGN SHALL BE MOUNTED TO 4" X 4" STEEL POST FOUNDATION.
 8. SIGN SHALL BE MOUNTED TO 4" X 4" STEEL POST FOUNDATION.
 9. SIGN SHALL BE MOUNTED TO 4" X 4" STEEL POST FOUNDATION.
 10. SIGN SHALL BE MOUNTED TO 4" X 4" STEEL POST FOUNDATION.



NOTES:
 1. ALL DIMENSIONS UNLESS OTHERWISE NOTED.
 2. SIGN SHALL BE MOUNTED TO 4" X 4" STEEL POST FOUNDATION.
 3. SIGN SHALL BE MOUNTED TO 4" X 4" STEEL POST FOUNDATION.
 4. SIGN SHALL BE MOUNTED TO 4" X 4" STEEL POST FOUNDATION.
 5. SIGN SHALL BE MOUNTED TO 4" X 4" STEEL POST FOUNDATION.
 6. SIGN SHALL BE MOUNTED TO 4" X 4" STEEL POST FOUNDATION.
 7. SIGN SHALL BE MOUNTED TO 4" X 4" STEEL POST FOUNDATION.
 8. SIGN SHALL BE MOUNTED TO 4" X 4" STEEL POST FOUNDATION.
 9. SIGN SHALL BE MOUNTED TO 4" X 4" STEEL POST FOUNDATION.
 10. SIGN SHALL BE MOUNTED TO 4" X 4" STEEL POST FOUNDATION.



NOTES:
 1. ALL DIMENSIONS UNLESS OTHERWISE NOTED.
 2. SIGN SHALL BE MOUNTED TO 4" X 4" STEEL POST FOUNDATION.
 3. SIGN SHALL BE MOUNTED TO 4" X 4" STEEL POST FOUNDATION.
 4. SIGN SHALL BE MOUNTED TO 4" X 4" STEEL POST FOUNDATION.
 5. SIGN SHALL BE MOUNTED TO 4" X 4" STEEL POST FOUNDATION.
 6. SIGN SHALL BE MOUNTED TO 4" X 4" STEEL POST FOUNDATION.
 7. SIGN SHALL BE MOUNTED TO 4" X 4" STEEL POST FOUNDATION.
 8. SIGN SHALL BE MOUNTED TO 4" X 4" STEEL POST FOUNDATION.
 9. SIGN SHALL BE MOUNTED TO 4" X 4" STEEL POST FOUNDATION.
 10. SIGN SHALL BE MOUNTED TO 4" X 4" STEEL POST FOUNDATION.



NOTES:
 1. ALL DIMENSIONS UNLESS OTHERWISE NOTED.
 2. SIGN SHALL BE MOUNTED TO 4" X 4" STEEL POST FOUNDATION.
 3. SIGN SHALL BE MOUNTED TO 4" X 4" STEEL POST FOUNDATION.
 4. SIGN SHALL BE MOUNTED TO 4" X 4" STEEL POST FOUNDATION.
 5. SIGN SHALL BE MOUNTED TO 4" X 4" STEEL POST FOUNDATION.
 6. SIGN SHALL BE MOUNTED TO 4" X 4" STEEL POST FOUNDATION.
 7. SIGN SHALL BE MOUNTED TO 4" X 4" STEEL POST FOUNDATION.
 8. SIGN SHALL BE MOUNTED TO 4" X 4" STEEL POST FOUNDATION.
 9. SIGN SHALL BE MOUNTED TO 4" X 4" STEEL POST FOUNDATION.
 10. SIGN SHALL BE MOUNTED TO 4" X 4" STEEL POST FOUNDATION.



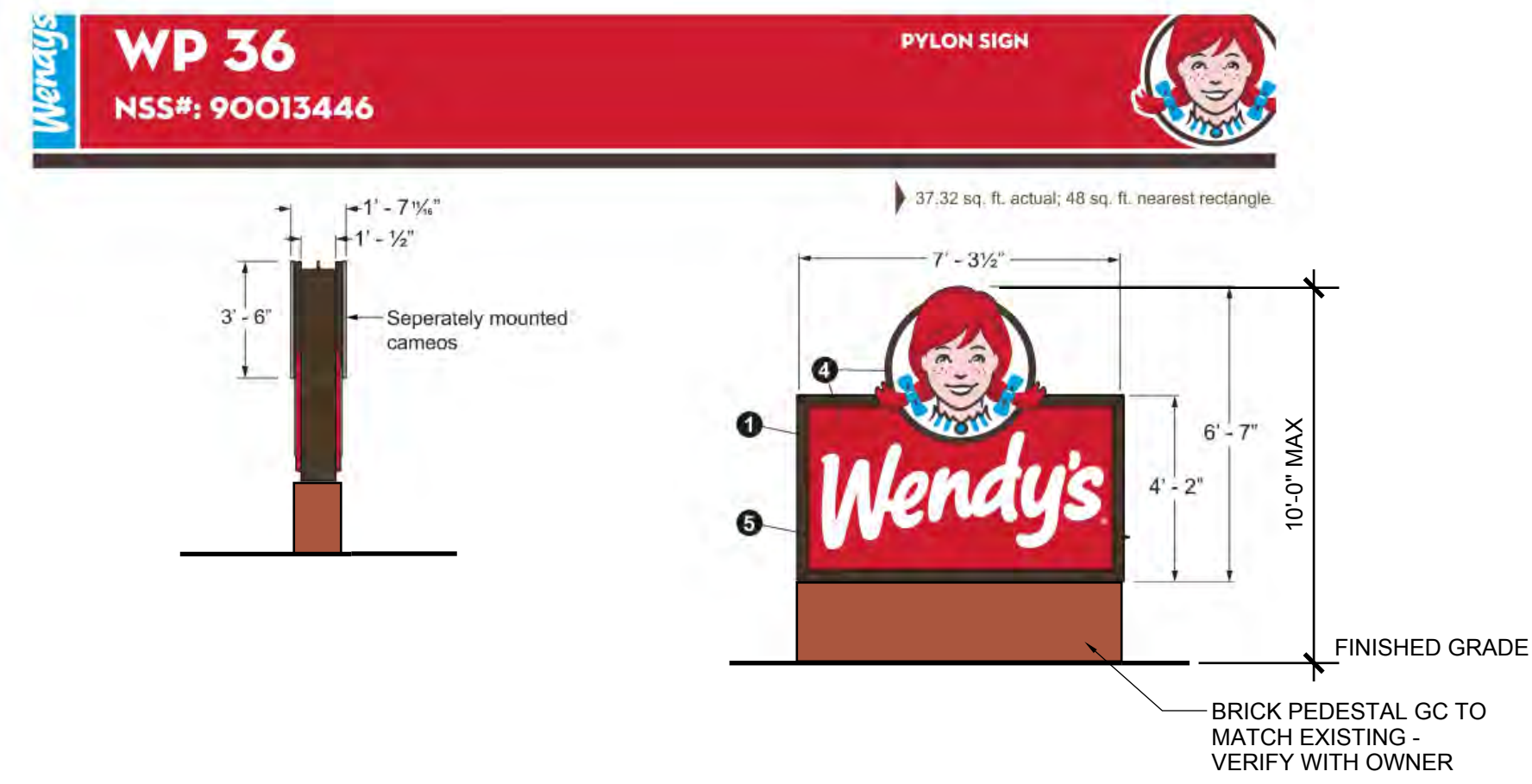
THESE DRAWINGS AND SPECIFICATIONS ARE THE PROPERTY OF TIDEWATER ARCHITECTS, LLC AND ARE NOT TO BE USED FOR ANY OTHER PROJECTS EXCEPT BY AGREEMENT WITH TIDEWATER ARCHITECTS, LLC. ALL RIGHTS RESERVED.



3 Existing Front Elevation
1/4" = 1'-0"



2 Proposed Front Elevation
1/4" = 1'-0"



MATERIALS

- 1 12 1/2" wide aluminum extrusion with 2 1/2" aluminum retainers.

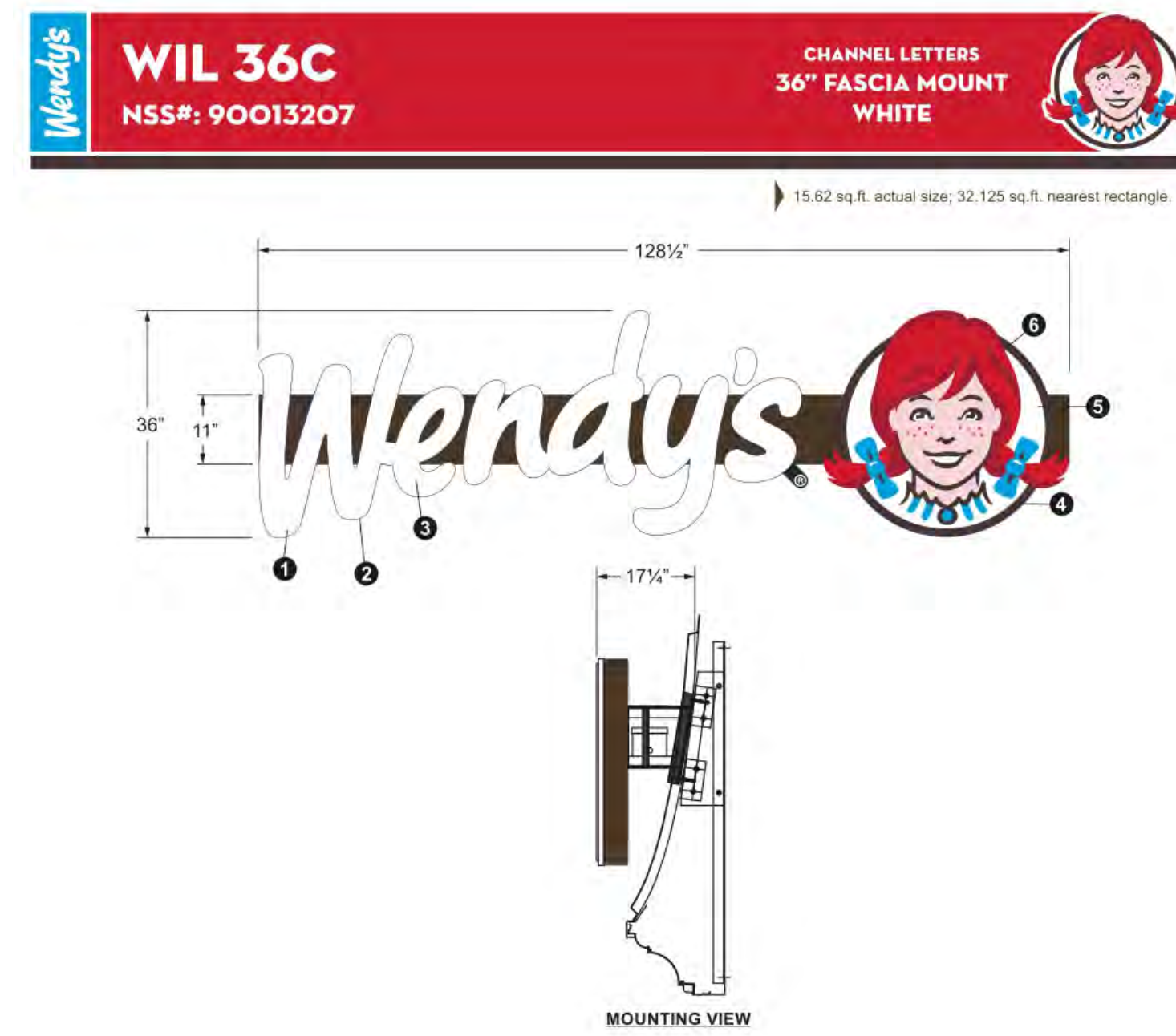
- 4 Illuminated with high output cool white fluorescent tubes. Cameo illuminated with white LEDs.*
- 6 1 1/2" deep pan formed 3/4" modified acrylic with 1/2" deep embossed copy.

COLORS & FINISHES

- 1 Brown (PMS 439C - outline)
- 2 Blue (PMS 299C - bow, shirt, brooch)
- 3 Flesh (PMS 698C - face, neck)
- 4 Red (PMS 186C - hair, pylon face background)
- 5 Dark Red (PMS 201C - hair outline)
- 6 White (cameo face, text)
- 7 Dark Bronze - ALC #313 (pylon cabinet)

*Total electrical load = 7.08 amps. Requires 1-20 amp circuit at 120v/60Hz.

4 WM 40
NTS



MATERIALS

- 1 Letter faces - thermo-formed 1/8" acrylic faces with 1/2" embossment.
- 2 Letter return - 5" deep .040 aluminum
- 3 Letter illumination - white LEDs.*
- 4 Cameo return - 5" deep .040 aluminum
- 5 Cameo face - full color cameo thermo-formed with 1/8" acrylic face with 1/2" embossment.
- 6 Cameo illumination - white LEDs.*

Total electrical load = 1.2 amps. Requires 1-20 amp circuit @ 120v/60Hz.

COLORS & FINISHES

- 1 Brown (PMS 439C - outline)
- 2 Blue (PMS 299C - bow, shirt, brooch)
- 3 Flesh (PMS 698C - face, neck)
- 4 Red (PMS 186C - hair, freckles)
- 5 Dark Red (PMS 201C - hair outline)
- 6 White (cameo face, letters)

Cameo available for individual purchase. Call for details.

1 Signage
NTS

Seals:

Wendy's

101 Red Bank Rd
Goose Creek, SC 29445

Project:

Front & Right Elevations

Project No: TWA1816
Date: 4-9-18

Revisions					
-	-	-	-	-	-
-	-	-	-	-	-
-	-	-	-	-	-
-	-	-	-	-	-
-	-	-	-	-	-

Drawn By: TWA
Checked By: TWA



Architectural Review Board

APPLICATION / INFORMATION SUMMARY

DEPARTMENT OF PLANNING AND ZONING 843-797-6220 EXT. 1118

P.O. Drawer 1768

519 N. Goose Creek Blvd.

Goose Creek, South Carolina 29445-1768

www.cityofgoosecreek.com

Fax: 843-863-5208

Property Address: 609 St. James Avenue		TMS No.:
Review request: <input checked="" type="checkbox"/> Conceptual <input type="checkbox"/> Preliminary <input type="checkbox"/> Final	For: <input type="checkbox"/> New Construction <input checked="" type="checkbox"/> Alterations / Additions <input type="checkbox"/> Repairs or repaint with no changes	Preliminary meeting date requested: <input type="checkbox"/> Appeal Decision of Architectural Review Board <input checked="" type="checkbox"/> Color Change <input checked="" type="checkbox"/> Demolition

Property Owner: McDonald's USA, LLC	Daytime phone:
Applicant: Keisha Smith, McDonald's USA, LLC	Daytime phone: 470-230-9466
ARB Meeting Representative: James Rosich	Contact Information: 404-242-5895
Applicant's mailing address: McDonalds USA, LLC - One Glenlake Pkwy, Suite 500	
City: Atlanta	State: GA Zip: 30328
Applicant's e-mail address: keisha.smith@us.mcd.com	
Applicant's relationship: <input type="checkbox"/> Owner <input checked="" type="checkbox"/> Design Professional <input type="checkbox"/> Contractor <input type="checkbox"/> Real Estate Agent/Broker <input type="checkbox"/> Other	

Materials/Colors Used: (specific color(s)/manufacture #'s listed: samples must be presented to Board attached)
(Example: Building Materials, Exterior Colors, Landscaping, Lighting)

McDonald's Color Scheme "Craftsman." Existing masonry to remain. EIFS at parapet color: Benjamin Moore HC-85 Fairview Taupe. EIFS at brand wall: Benjamin Moore 2134-30 Iron Mountain. Corrugated metal at drive-thru surround: Charcoal gray by Metal ERA. Corrugated metal at parapet: Cityscape by Metal ERA. New white trellis with infill panels and integrated LED lighting. Drive-thru trellis: charcoal gray metal by Metal ERA and 3-inch deep gold underscore. Trellis fascia band: Cityscape by Metal ERA.

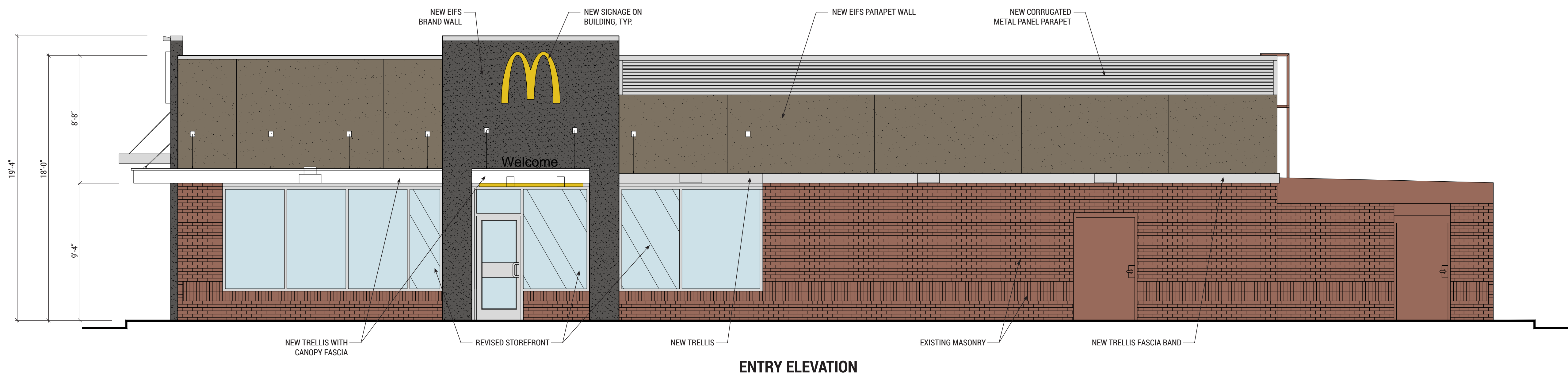
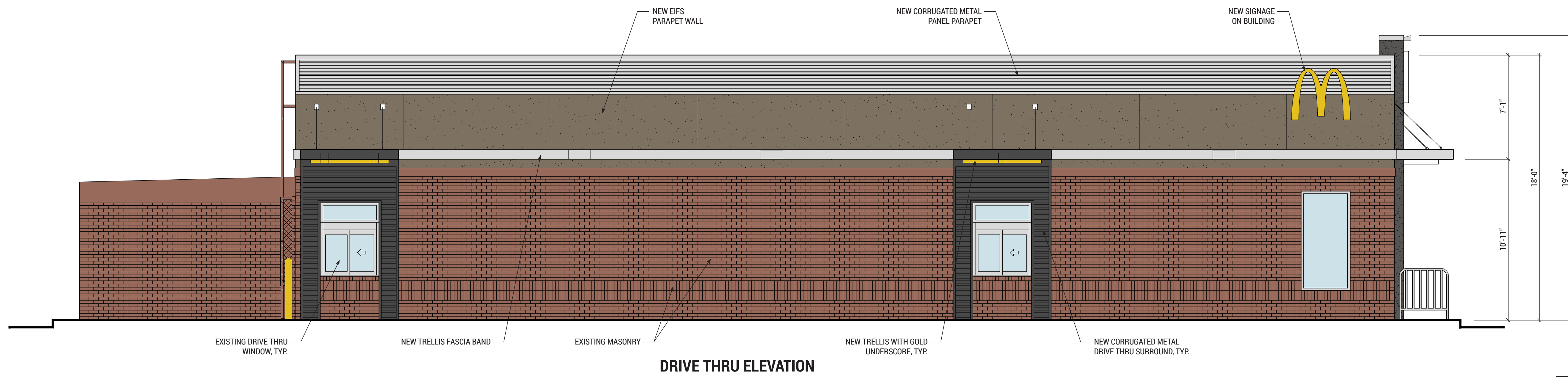
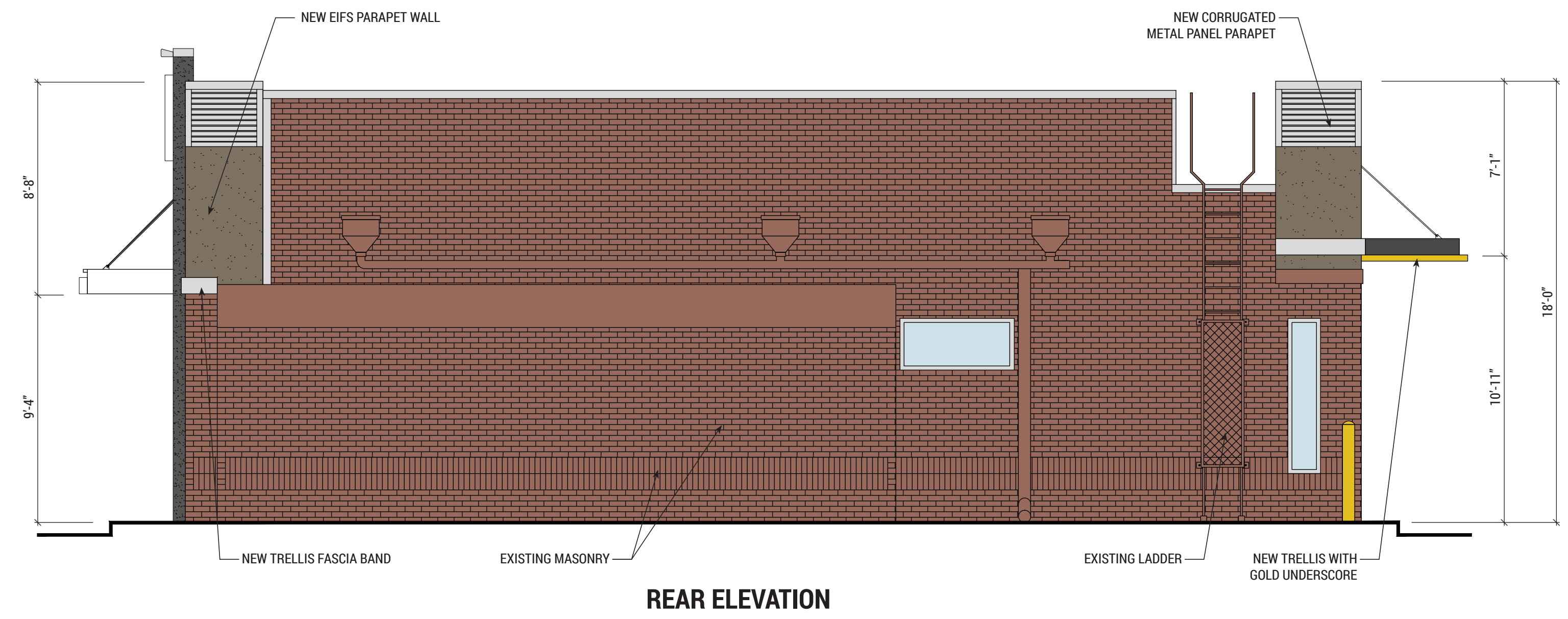
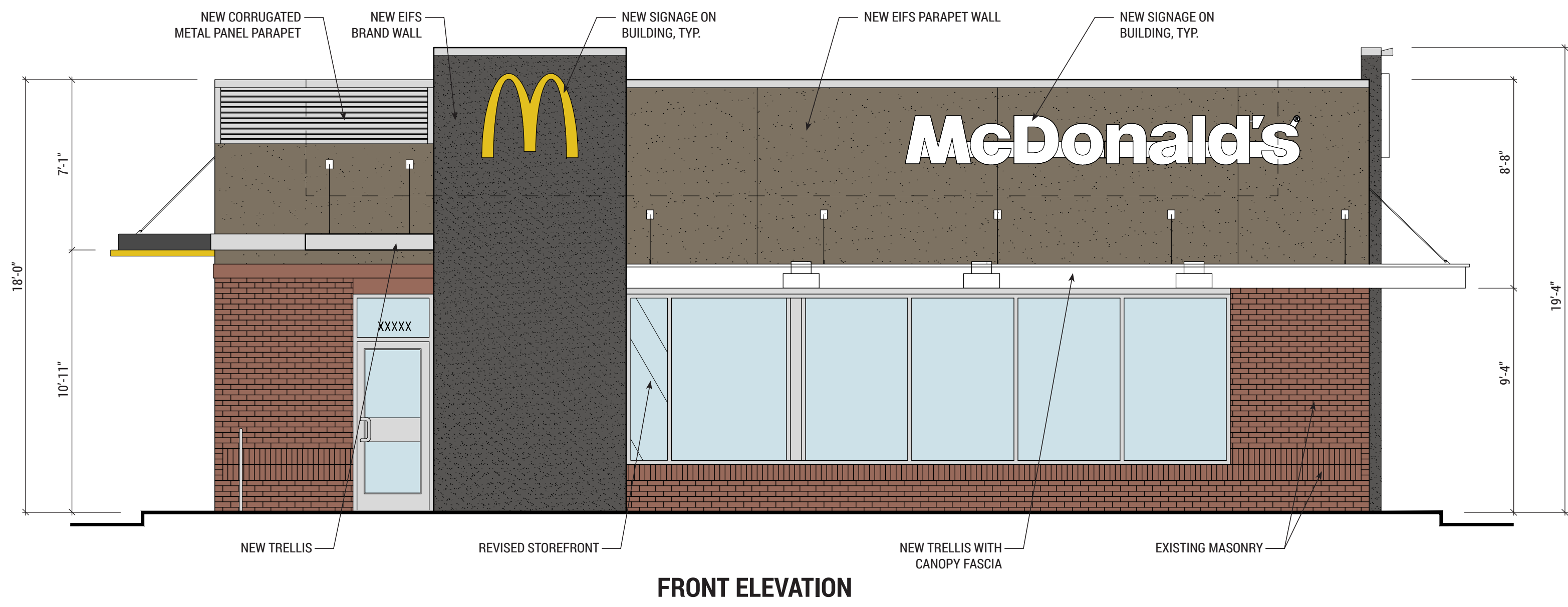
Scope of Work: (please give a detailed description)

Exterior remodel as described above and shown on color elevations. New signage on building. Interior modifications will include flooring and ceiling replacement in the dining room area, and bathroom remodeling. No changes are proposed to the drive-thru or site layout with the exception of modifications to ensure ADA compliance. No changes to site lighting or landscaping are proposed.

I hereby acknowledge by my signature below that the foregoing application is complete and accurate and that I am the owner of the subject property or an authorized representative. I authorize the subject property to be posted and inspected, and the application to be heard by the Architectural Review Board of the City of Goose Creek on the date specified.

Applicant's signature:  **Date:** 3.28.18

Print name legibly: KEISHA SMITH



EXTERIOR FINISH SCHEDULE COLOR SCHEME: 'CRAFTSMAN'	
BUILDING ITEMS	DESCRIPTION
MASONRY FINISH	EXISTING MASONRY TO REMAIN; ANY INFILL/REPAIR TO MATCH EXISTING
EIFS AT PARAPET	BENJAMIN MOORE HC-85 FAIRVIEW TAUPE
EIFS AT BRAND WALL	BENJAMIN MOORE 2134-30 IRON MOUNTAIN
CORRUGATED METAL AT DRIVE THRU SURROUND	CHARCOAL GRAY BY METAL ERA
CORRUGATED METAL AT PARAPET	CITYSCAPE BY METAL ERA
WHITE TRELLIS w/ WHITE CANOPY FASCIA	8" HIGH WITH INFILL PANELS BY TRELLIS VENDOR; FASCIA WITH INTEGRATED LED LIGHT BY SIGNAGE VENDOR INSTALLED BY TRELLIS VENDOR
DT TRELLIS w/ GOLD UNDERSCORE	8" HIGH TRELLIS BY TRELLIS VENDOR, COLOR: CHARCOAL; 3" DEEP GOLD UNDERSCORE BY TRELLIS VENDOR w/ RECESSED FIXTURES
TRELLIS FASCIA BAND	2"x8" BAND BY TRELLIS VENDOR COLOR: CITYSCAPE
STOREFRONT	REVISED STOREFRONT TO MATCH EXISTING